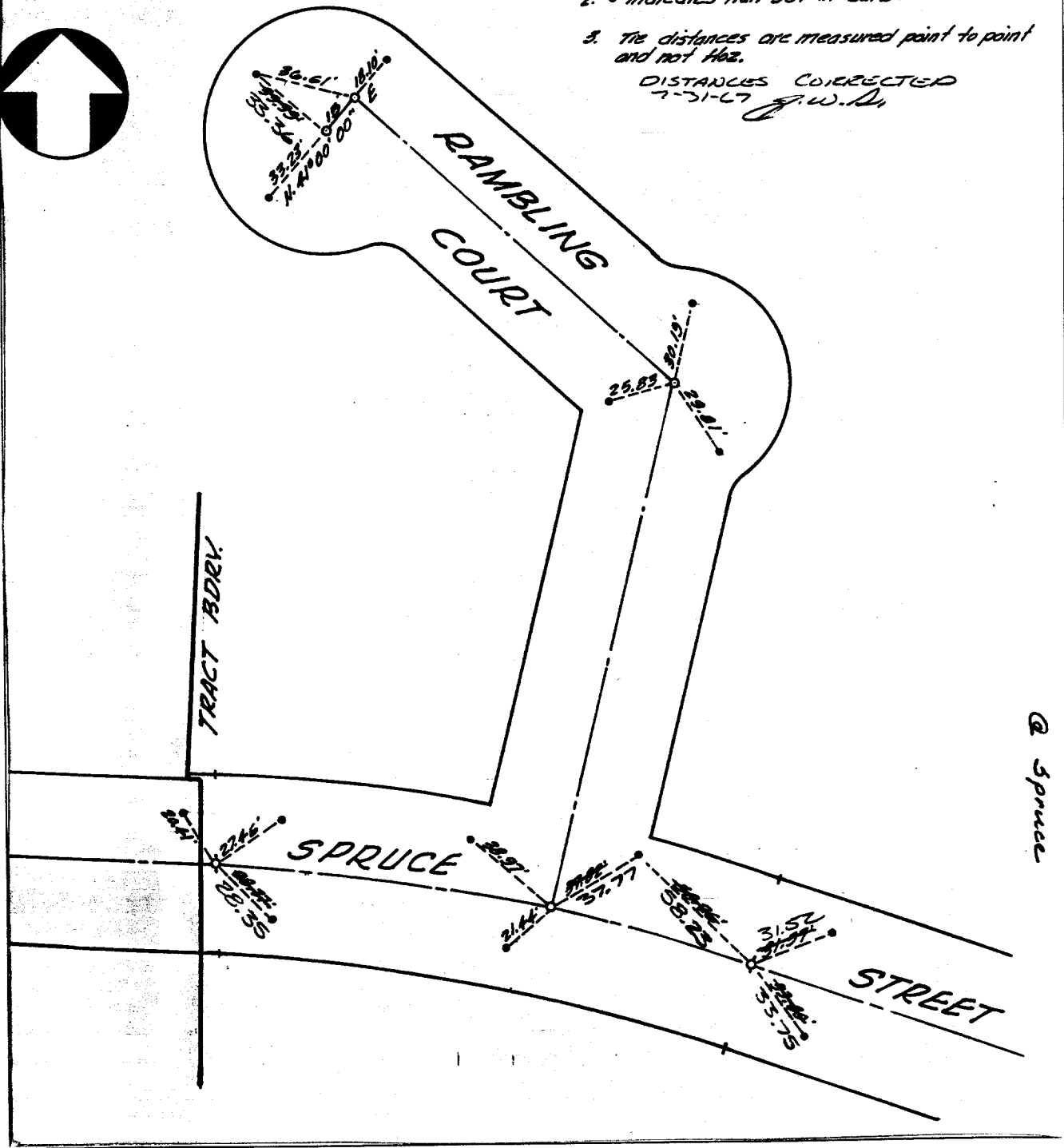
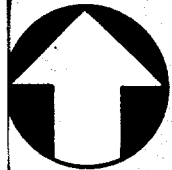


Street: RAMBLING CT.
6757.71E
 X-Street: SPRUCE ST.
 OFFICIAL USE ONLY

NOTES:
 1. ○ Indicates 3/4" I.P. set per M.B.56/75,76&77
 2. ● Indicates nail set in curb.
 3. Tie distances are measured point to point and not Hoz.
 DISTANCES CORRECTED
 7-31-67 J.W.D.



@ Spruce

× FD. Ramset Nail on T/C ● FD. LD. & TK. on T/C
 ■ FD. "C" Nail on T/C ○ Set LD. & TK. on T/C

Scale:
 Date:
 Drawn by:
 W.O.:
 F.B.:

OFFICIAL TIE PLAT
CITY OF RIVERSIDE
 These ties are for the purpose of perpetuating the found monumentation. No claim is made as to the relationship of the points or lines shown hereon to true boundary locations.

TRACT 3492
 Sheet 1 of 1
 File No.: