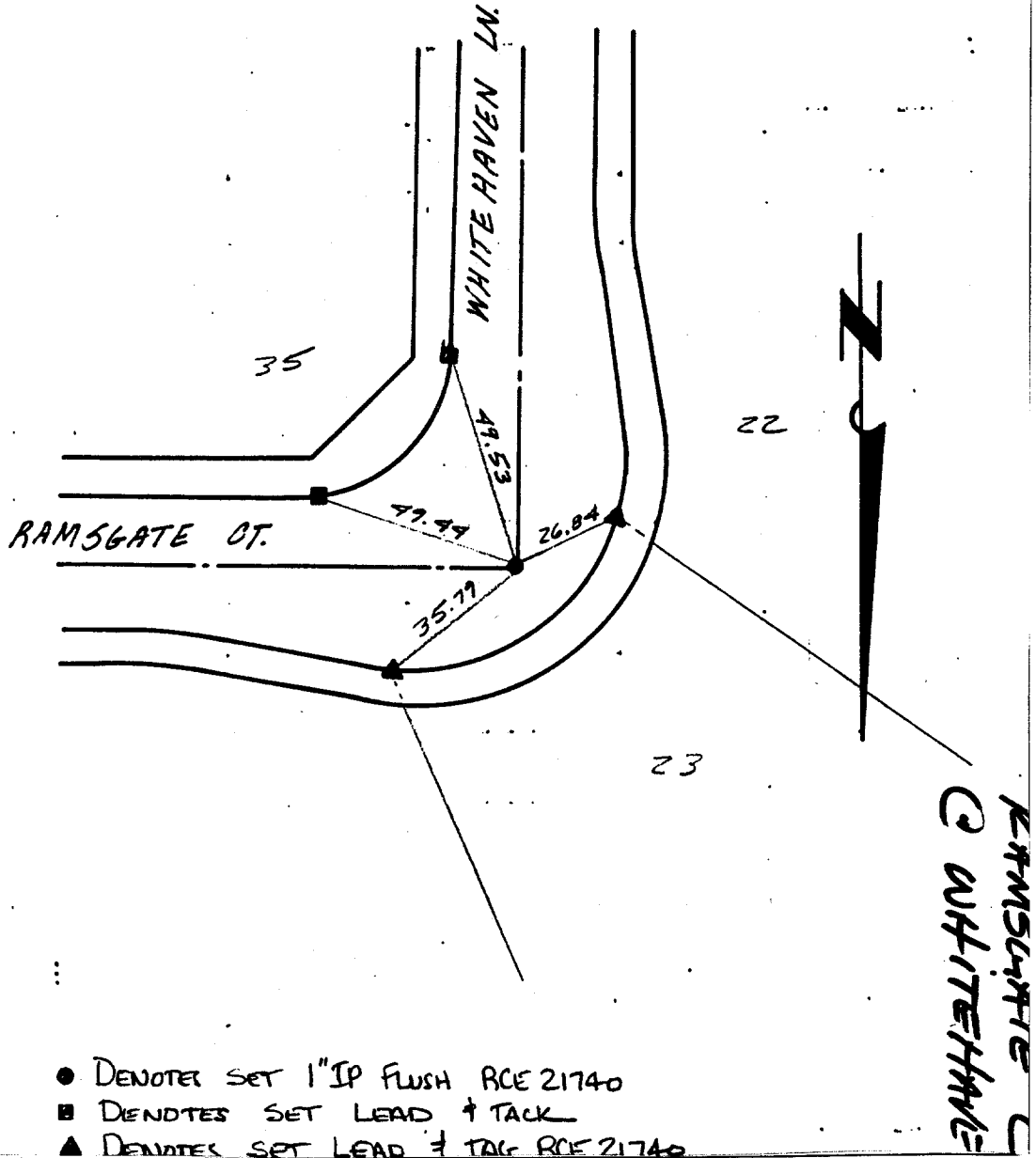


TR. 21010-1

SHT 3

GABEL, COOK & BECKLUND
 Environmental • Hydrology • Planning
 Civil Engineering • Surveying • Structures
 647 North Main Street, Suite 1-B, Riverside, Calif. 92501
 Telephone 714 788-8092

TIES TR. 21010-1



- DENOTES SET 1" IP FLUSH RCE 21740
- DENOTES SET LEAD + TACK
- ▲ DENOTES SET LEAD + TAG RCE 21740

- × FD. Ramset Nail on T/C
- FD. LD. & TK. on T/C
- FD. "C" Nail on T/C
- Set LD. & TK. on T/C

Street: RAMSGATE CT
6759, T/P
 X-Street: WHITEHAVEN LN.
 OFFICIAL USE ONLY

Scale:
 Date:
 Drawn by:
 W.O.:
 F.B.:

OFFICIAL TIE PLAT
CITY OF RIVERSIDE

These ties are for the purpose of perpetuating the found monumentation. No claim is made as to the relationship of the points or lines shown hereon to true boundary locations.

TRACT 21010-1

Sheet 1 of 1
 File No.: