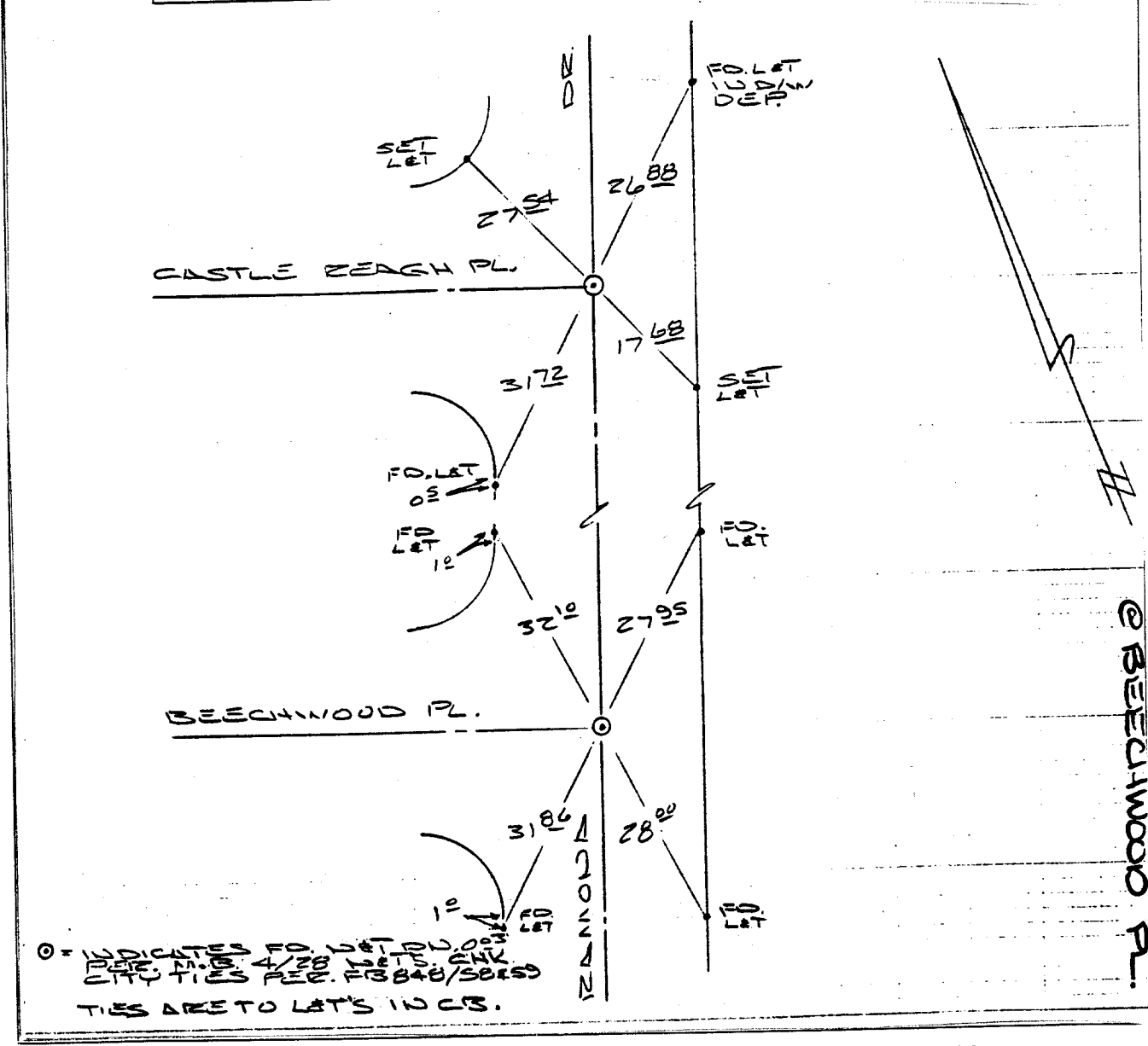


31 - 17 - 01 RAMONDA DR. AT BEECHWOOD PL.  
 & CASTLE REAGH  
 SURVEYED BY GARCIA - STEPHENS - LOPEZ

LL 11 PAGE 88  
 DATE FEB. 8, 1989

**HISTORICAL DATA**  
 CRFB 528/79  
 RAMONDA TRACT  
 MAP OF CASTLE  
 REAGH  
 CRFB 848/58&59

**TRANSIT TIES**



INDICATES TO SET LAT TO THE POINTS SHOWN IN THIS PLAT. TIES ARE TO LAT'S IN CS.

- ✕ FD. Ramset Nail on T/C
- FD. LD. & TK. on T/C
- FD. "C" Nail on T/C
- Set LD. & TK. on T/C

Street: **RAMONDA DRIVE**  
**6768.71E**  
 OFFICIAL USE ONLY  
 X-Street: **BEECHWOOD PL. & CASTLE REAGH PL.**

Scale:  
 Date:  
 Drawn by:  
 W.O.:  
 F.B.:

**OFFICIAL TIE PLAT**  
**CITY OF RIVERSIDE**

*These ties are for the purpose of perpetuating the found monumentation. No claim is made as to the relationship of the points or lines shown hereon to true boundary locations.*

Sheet 1 of 1  
 File No.: