

Street: RAMONA AVE
6770.TIF

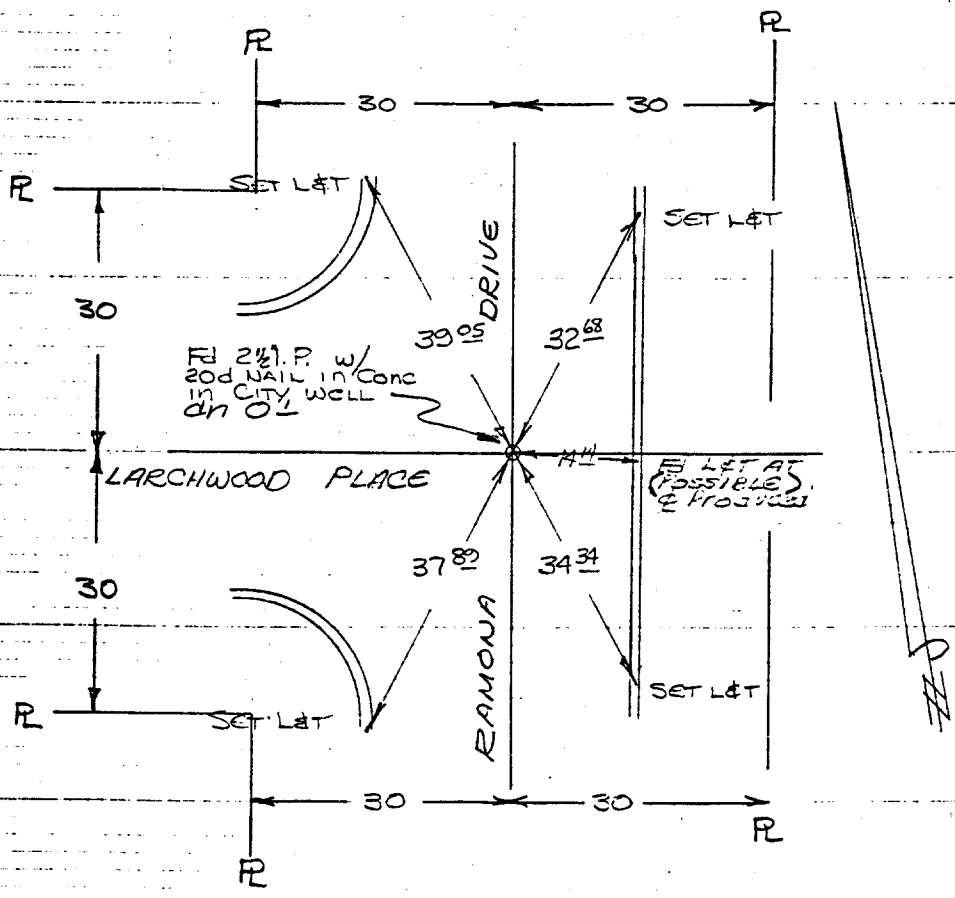
X-Street: LARCHWOOD PL
 OFFICIAL USE ONLY

RAMONA DRIVE
 AT
 LARCHWOOD PLACE

TRANSIT TIES

HISTORICAL DATA
 1. Pub. Util. Tie Sheet
 2. BRENTWOOD PLACE TRACT

CREW:
 HUTCHINSON
 THOEP
 RUSSELL



RAMONA AVE. C.R.-F.B. 218/55
 @ Larchwood

- ✕ FD. Ramset Nail on T/C
- FD. "C" Nail on T/C

- FD. LD. & TK. on T/C
- Set LD. & TK. on T/C

Scale:
 Date:
 Drawn by:
 W.O.:
 F.B.:

OFFICIAL TIE PLAT
CITY OF RIVERSIDE

These ties are for the purpose of perpetuating the found monumentation. No claim is made as to the relationship of the points or lines shown hereon to true boundary locations.

Sheet 1 of 1
 File No.: