

Street: RAMONA 2ND P.R.C.  
6773.71E

X-Street: LARCHWOOD & RIVERSIDE  
 OFFICIAL USE ONLY

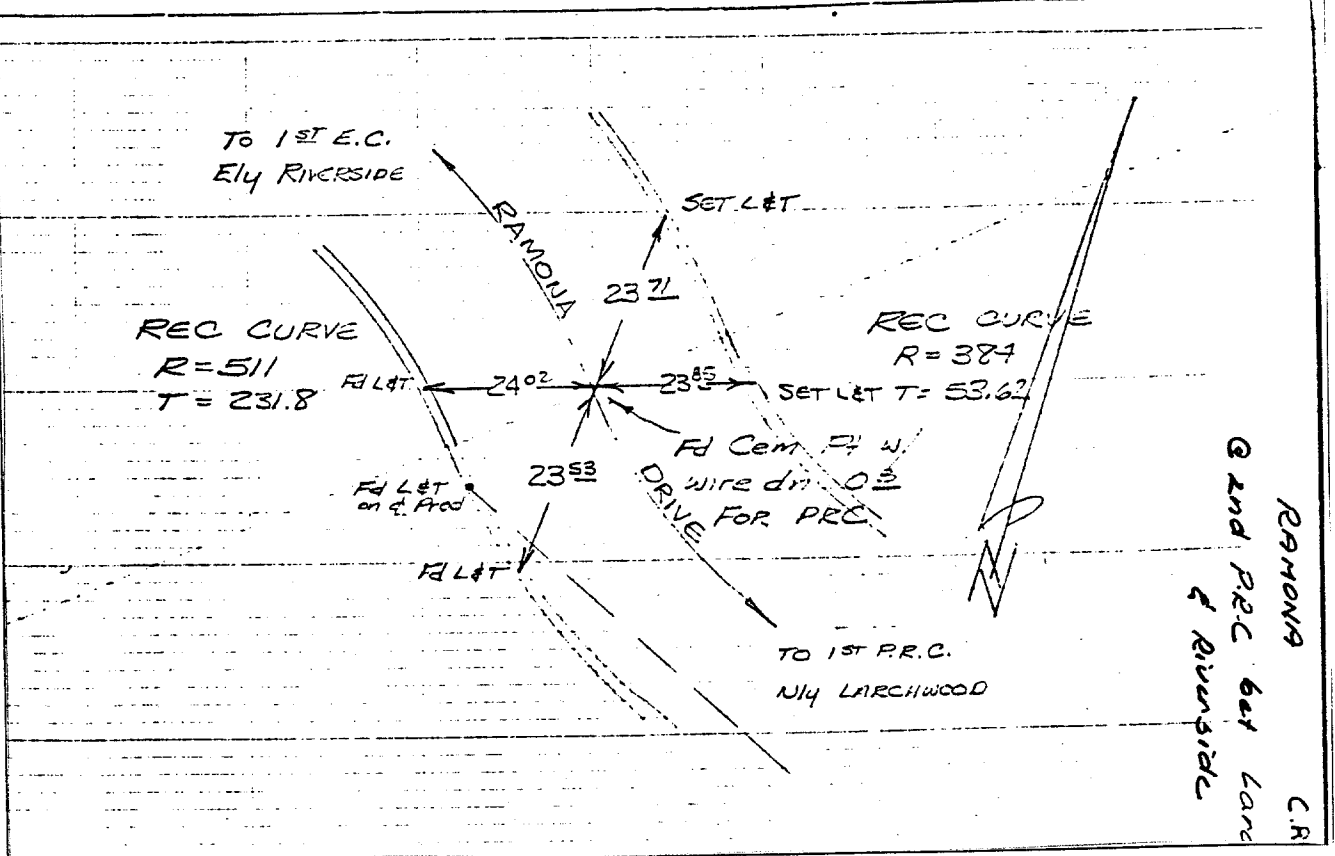
RAMONA DRIVE  
 AT  
 2ND P.R.C.  
 bet.  
 LARCHWOOD &  
 RIVERSIDE

TRANSIT TIES

HISTORICAL DATA  
 1. 256/28  
 2. BRENTWOOD PLAKE TRACT

CREW:  
 HUTCHINSON  
 THORP  
 RUSSELL

DATE  
 JUNE 27, 1968



- ✕ FD. Ramset Nail on T/C
- FD. LD. & TK. on T/C
- FD. "C" Nail on T/C
- Set LD. & TK. on T/C

Scale:  
 Date:  
 Drawn by:  
 W.O.:  
 F.B.:

## OFFICIAL TIE PLAT

### CITY OF RIVERSIDE

*These ties are for the purpose of perpetuating the found monumentation. No claim is made as to the relationship of the points or lines shown hereon to true boundary locations.*

Sheet 1 of 1  
 File No.: