

SURVEY OF RAMONA DR. C.P.I.
 SURVEYED BY GARZIN-STEPHENS-FAUD

INDEX

LL11

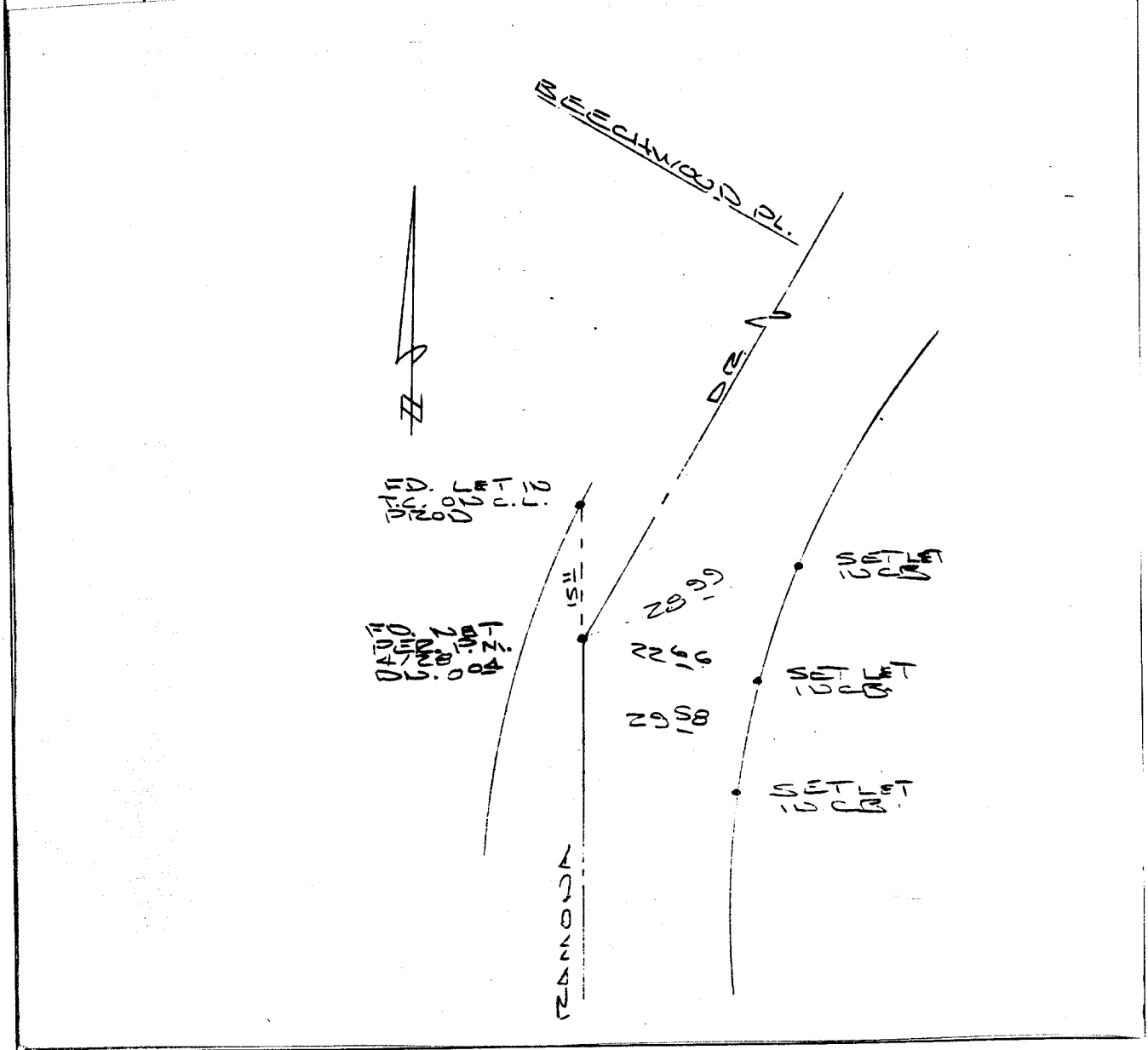
PAGE

86A

DATE JAN. 13, 1989

HISTORICAL DATA
 P.M.B. 4/28

SWING TIES



× FD. Ramset Nail on T/C
 ■ FD. "C" Nail on T/C

● FD. LD. & TK. on T/C
 ○ Set LD. & TK. on T/C

Scale:

Date:

Drawn by:

W.O.:

F.B.:

OFFICIAL TIE PLAT

CITY OF RIVERSIDE

These ties are for the purpose of perpetuating the found monumentation. No claim is made as to the relationship of the points or lines shown hereon to true boundary locations.

Sheet 1 of 1

File No.:

Street: RAMONA DR. 6777.71E N/O X-Street: OLIVEWOOD AVE
 OFFICIAL USE ONLY