

Street: **RANCHO LOMA DRIVE**
6799.71E

X-Street: **GOLDEN AVE**
 OFFICIAL USE ONLY

UNVEY OF **TRACT 20866-1** **FINAL** **MON'S** DATE **12-18-81** **JO** **81-11**

PARTY NO. AND MEMBERS **P. Diaz & J. Mendola**

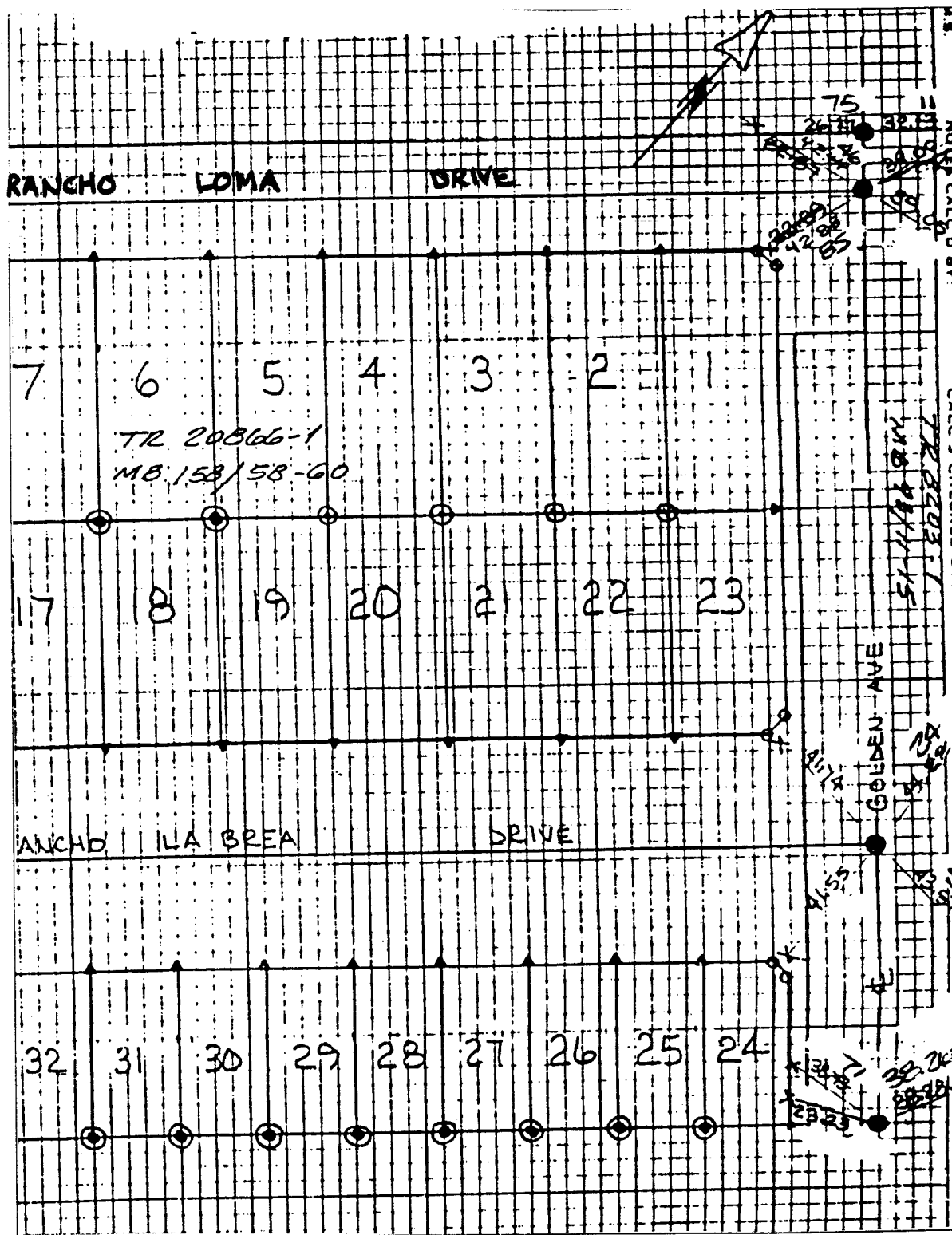
NOTES CALC. BY:

CALC'S CHECKED BY:

MAP NO.:

WEATHER:

F.B. 1053 PAGE 1/2



- ✕ FD. Ramset Nail on T/C
- FD. LD. & TK. on T/C
- FD. "C" Nail on T/C
- Set LD. & TK. on T/C

Scale:
 Date:
 Drawn by:
 W.O.:
 F.B.:

OFFICIAL TIE PLAT

CITY OF RIVERSIDE

These ties are for the purpose of perpetuating the found monumentation. No claim is made as to the relationship of the points or lines shown hereon to true boundary locations.

Sheet 1 of 1
 File No.: