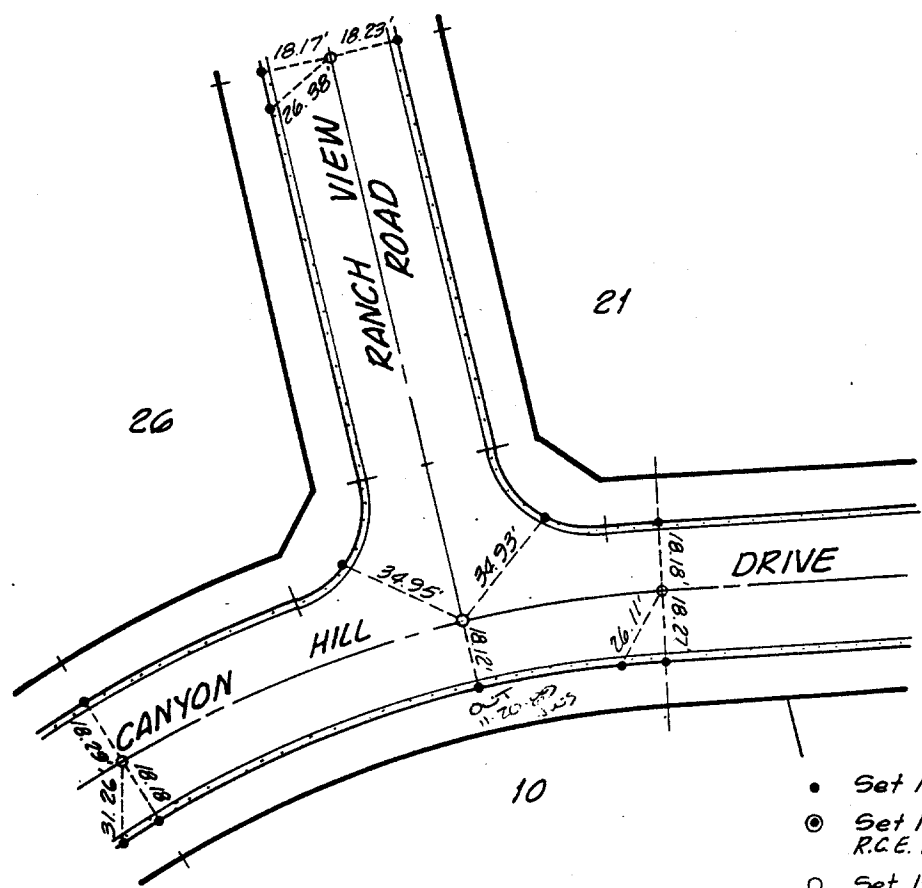


Street: RANCH VIEW RD. X-Street: CANYON HILL DRIVE
~~6803.71E~~ OFFICIAL USE ONLY



- Set Nail in Curb.
- ⊙ Set Nail and Tag R.C.E. 16056 in Curb.
- Set 1 1/4" O.D. Iron Pipe, Tagged R.C.E. 16056, per Riv. Co. Std. "A" Flush.

MB 167/7-10

TIES MADE DATE: SEPT. 22, 1989

W.O. 227.04 SHEET 5 OF 9 SHEETS

L A WAINSCOTT & ASSOCIATES
 CIVIL ENGINEERS
 GRAND TERRACE, CALIFORNIA
 (714) 824-1775

CITY OF RIVERSIDE

TRACT No. 21399
 M.B. 167/7-10

CANYON HILL DRIVE

- ✕ FD. Ramset Nail on T/C
- FD. LD. & TK. on T/C
- FD. "C" Nail on T/C
- Set LD. & TK. on T/C

Scale:
 Date:
 Drawn by:
 W.O.:
 F.B.:

OFFICIAL TIE PLAT
 CITY OF RIVERSIDE

These ties are for the purpose of perpetuating the found monumentation. No claim is made as to the relationship of the points or lines shown hereon to true boundary locations.

Sheet 1 of 1
 File No.: