

SWING TIES

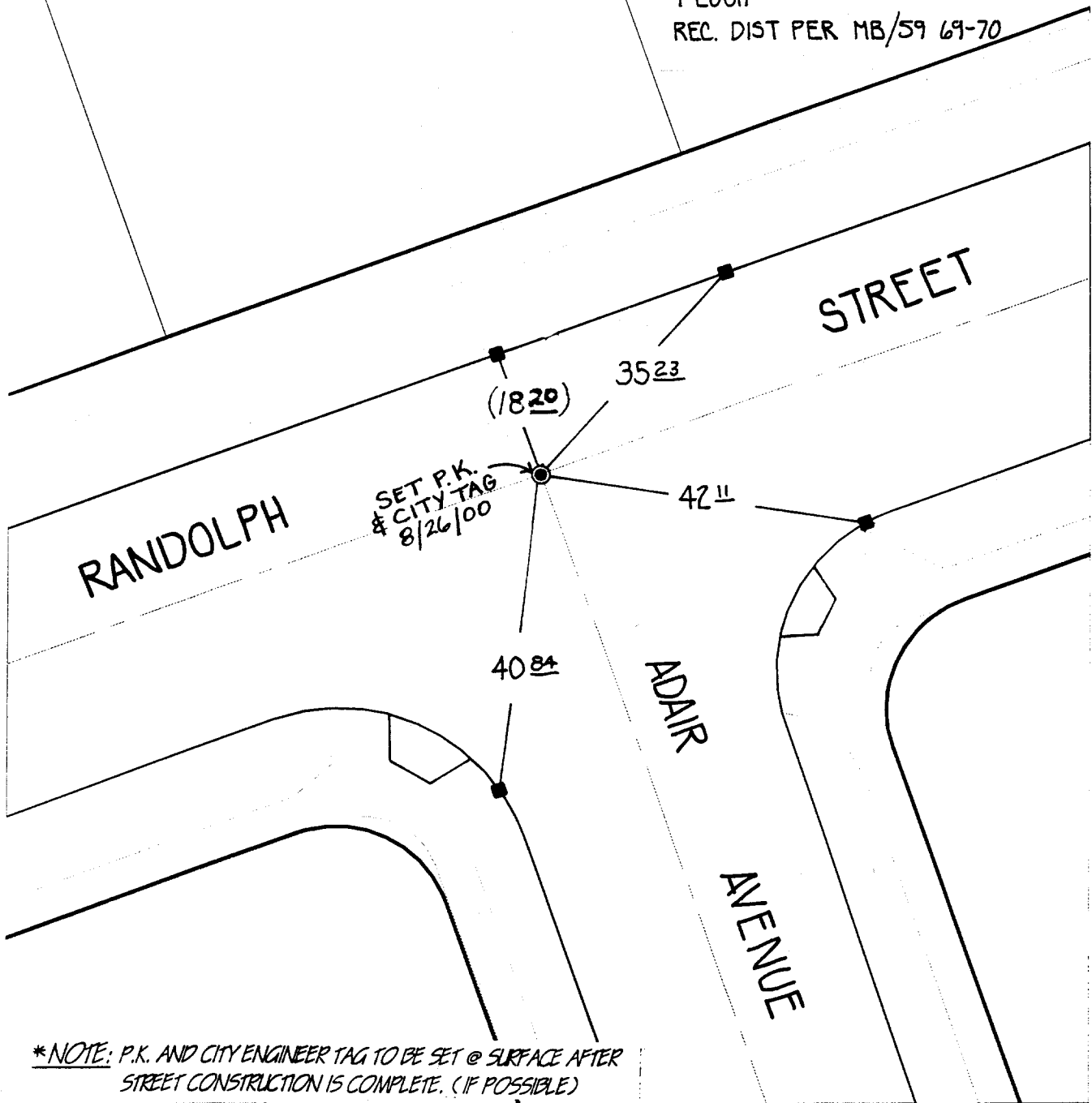
HISTORICAL DATA

MAXWELL & KING TIE SHT FOR TR3780
MB 59/69-70

NOTE

● FD. 1" I.P. W/ LS 2788
PER. MB 59/69-70
FLUSH
REC. DIST PER MB/59 69-70

Street: **6807. TIE**
RANDOLPH STREET
 X-Street: **ADAIR AVENUE**
 OFFICIAL USE ONLY



**NOTE: P.K. AND CITY ENGINEER TAG TO BE SET @ SURFACE AFTER STREET CONSTRUCTION IS COMPLETE. (IF POSSIBLE)*

- ✕ FD. Ramset Nail on T/C
- FD. "C" Nail on T/C

- FD. LD. & TK. on T/C
- Set LD. & TK. on T/C

Scale: 1" = 20'
 Date: 06/23/00
 Drawn by: SURVEY
 W.O.:
 F.B.:

OFFICIAL TIE PLAT CITY OF RIVERSIDE

These ties are for the purpose of perpetuating the found monumentation. No claim is made as to the relationship of the points or lines shown hereon to true boundary locations.



Sheet 1 of 1
 File No.: