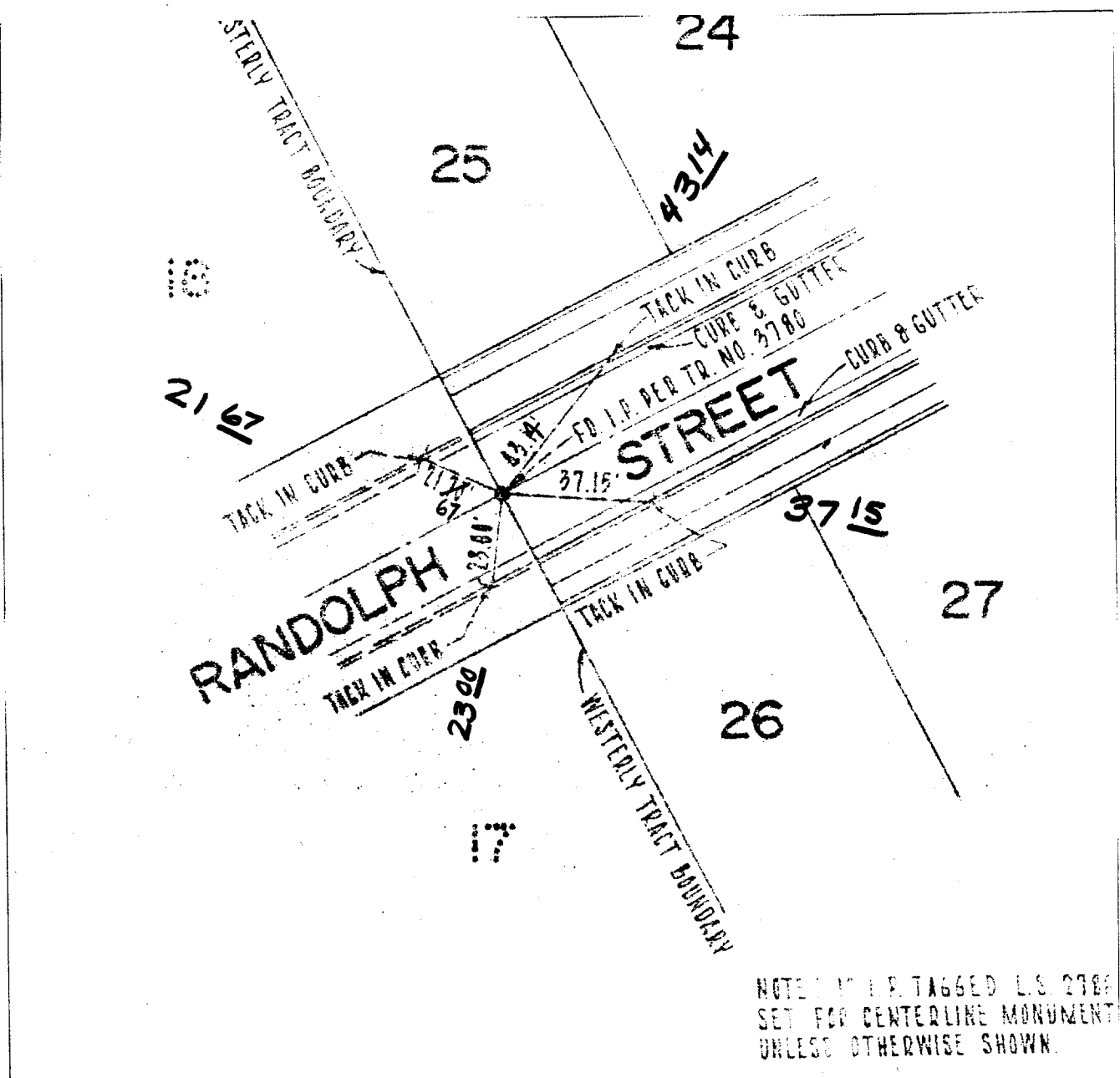


Street: RANDOLPH ST.  
6813. TIF

X-Street: Wily Tract Boundary

OFFICIAL USE ONLY



**CENTERLINE TIES**  
 TRACT 4023

**MAXWELL, BROWN & MULLINS**  
 PLANNING · ENGINEERING · SURVEYING  
 1771 No. D St., San Bernardino, California

SCALE 1" = 40'      JOB NO. 69-11-2  
 DATE OCT 20 1970      DWG NO. A14.6

- ✕ FD. Ramset Nail on T/C
- FD. LD. & TK. on T/C
- FD. "C" Nail on T/C
- Set LD. & TK. on T/C

Scale: 1" = 40'  
 Date: OCT 20 1970  
 Drawn by:  
 W.O.:  
 F.B.:

**OFFICIAL TIE PLAT**  
**CITY OF RIVERSIDE**

*These ties are for the purpose of perpetuating the found monumentation. No claim is made as to the relationship of the points or lines shown hereon to true boundary locations.*

TR 4023

Sheet 1 of 1  
 File No.: