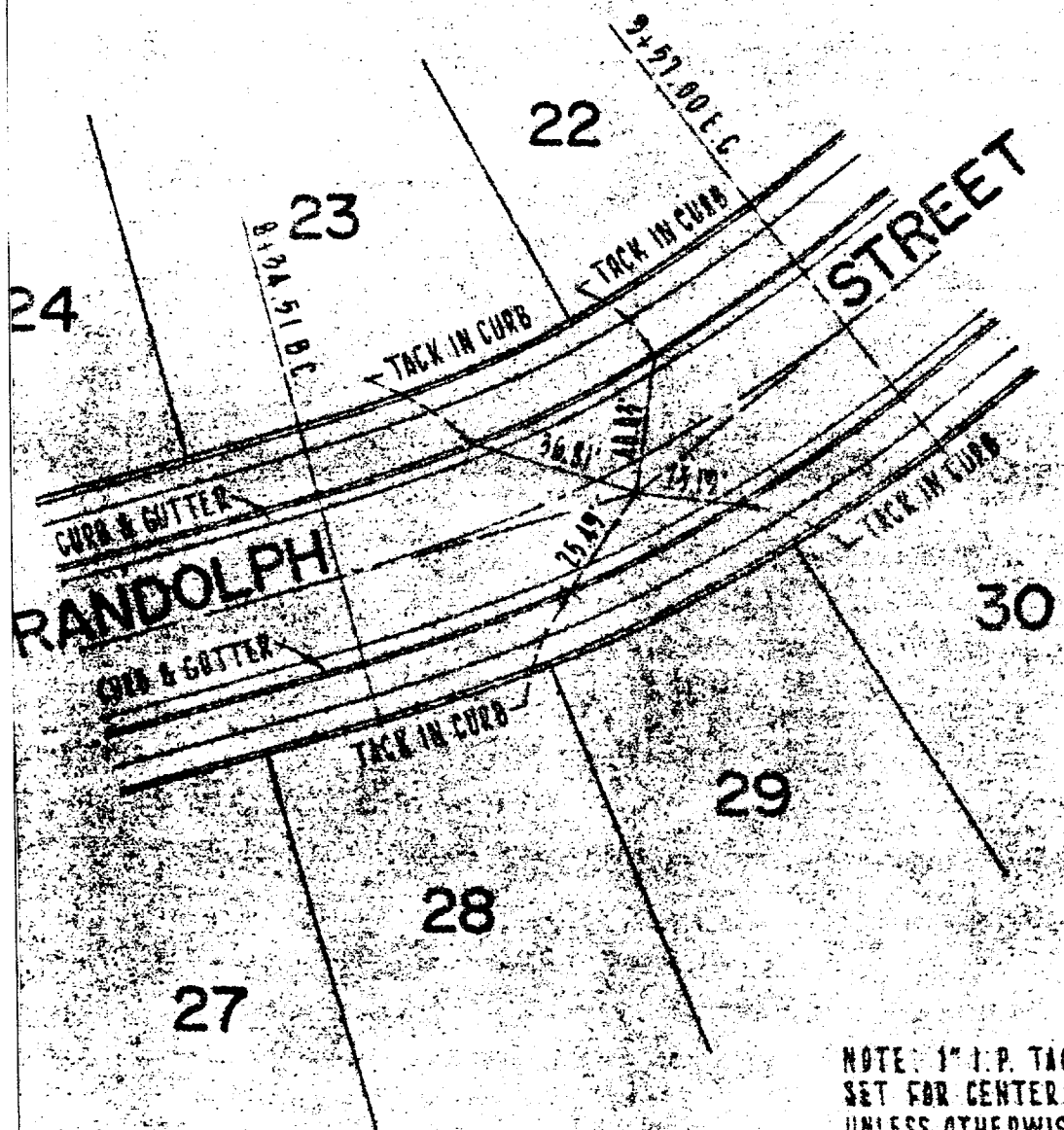


Street: RANDOLPH ST.

6815.71F

X-Street:
OFFICIAL USE ONLY



NOTE: 1" I.P. TAGGED L.S. 2788 SET FOR CENTERLINE MONUMENTS UNLESS OTHERWISE SHOWN.

CENTERLINE TIES TRACT 4023	MAXWELL, BROWN & MULLINS PLANNING ENGINEERING SURVEYING 1771 No. D St, San Bernardino, California 92405	
	SCALE: 1" = 40'	JOB NO. 69-11-3
	DATE: OCT. 20, 1970	DWG. NO. A14.6

- ✕ FD. Ramset Nail on T/C
- FD. LD. & TK. on T/C
- FD. "C" Nail on T/C
- Set LD. & TK. on T/C

Scale: 1" = 40'
 Date: OCT 20 1970
 Drawn by:
 W.O.:
 F.B.:

OFFICIAL TIE PLAT

CITY OF RIVERSIDE

These ties are for the purpose of perpetuating the found monumentation. No claim is made as to the relationship of the points or lines shown hereon to true boundary locations.

TRACT 4023

Sheet 1 of 1
 File No.: