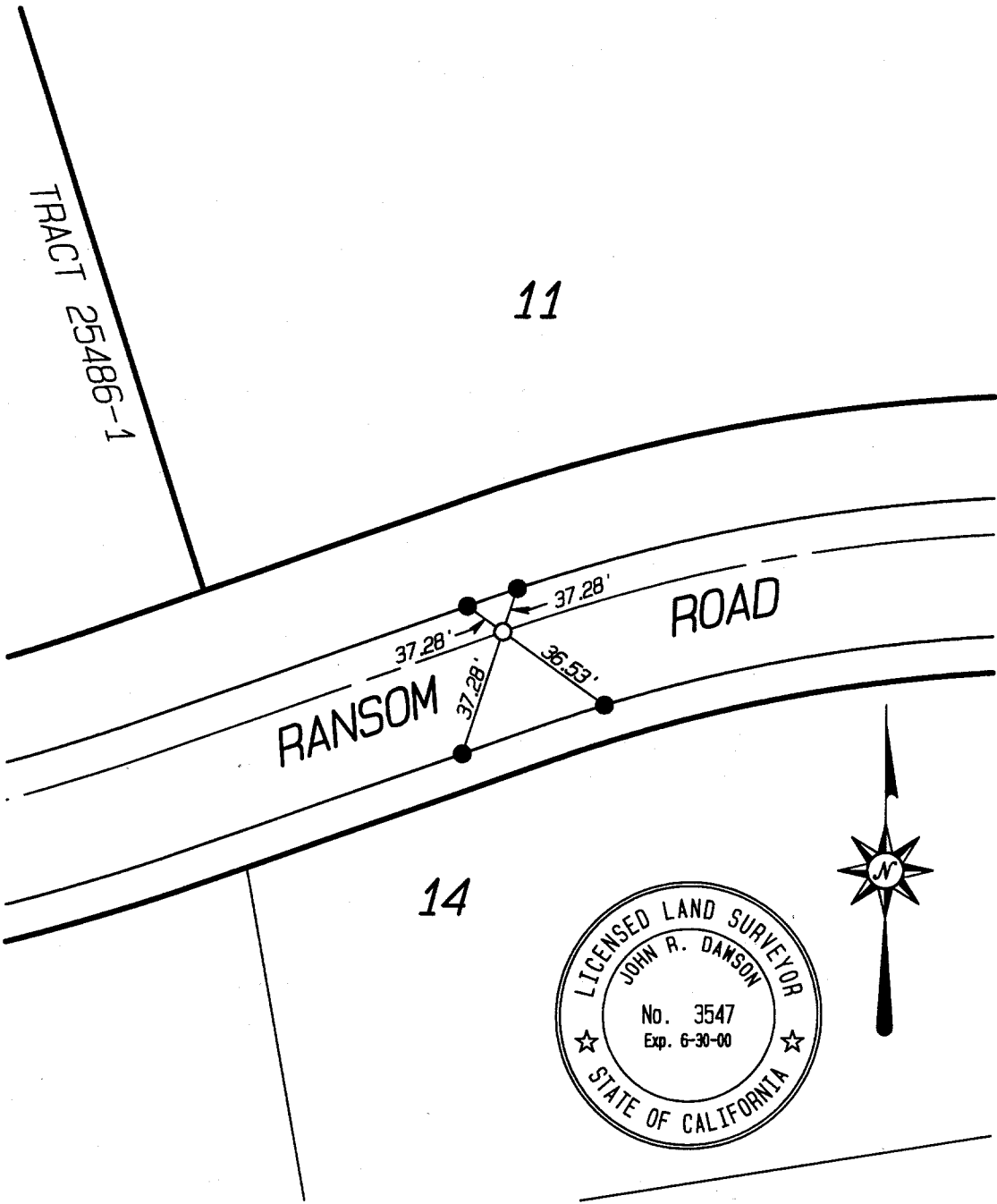



- INDICATES SET 8" BOAT SPIKE AND L.S. 3547 TAG FLUSH UNLESS OTHERWISE NOTED
  - INDICATES SET NAIL IN TOP OF CURB
  - ⊙ INDICATES SET NAIL AND L.S. 3547 TAG IN CURB ON LOT LINE PROJECTED UNLESS OTHERWISE NOTED
- NOTE: ALL TIES ARE TRANSIT TIES UNLESS OTHERWISE NOTED



STREET RANSOM ROAD  
 X-STREET WLY TR. BDY OMEGA ST  
 OFFICE USE ONLY

6837. TIF

SCALE: 1" = 50'	OFFICIAL TIE PLAT CITY OF RIVERSIDE	SHEET 8
DATE: 1/5/2000		
DR. BY: SRD	PREPARED BY:	
W.O.: 128.07	 <b>INTEGRA ENGINEERING, INC.</b> LAND SURVEYORS * CIVIL ENGINEERS 621 E. CARNEGIE DRIVE, #120, SAN BERNARDINO, CA. 92408 TELEPHONE (909) 383-0200 FAX (909) 383-0203	OF 13 SHEETS
F.B.: 1		FILE No.: