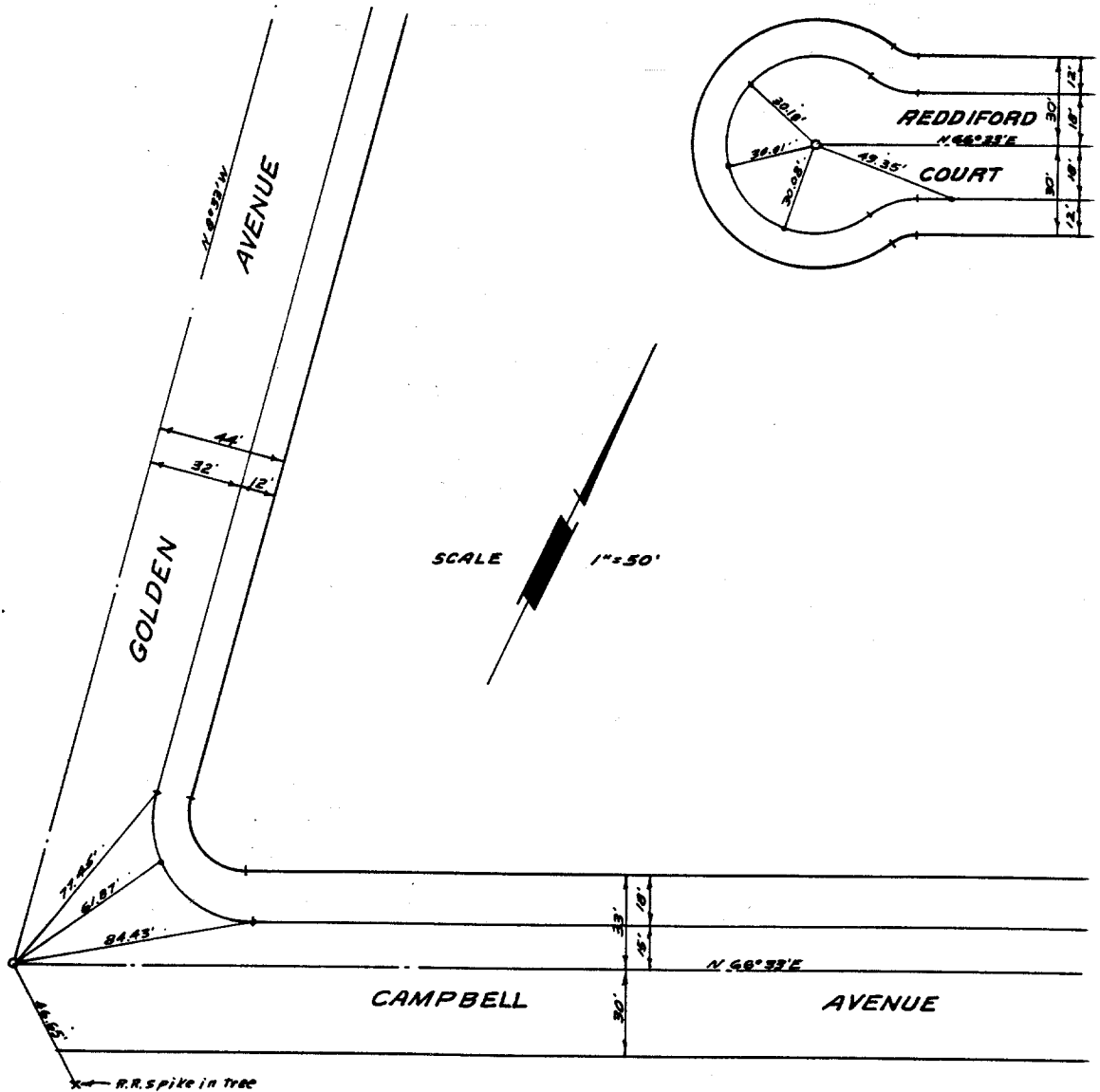


6855. TIF

Street: REDDIFORD COURT

X-Street: OFFICIAL USE ONLY

Being a subdivision of a portion of sections
3410 T.35., R.6W., Per Map of Rancho La Sierra
Map Book 6, Page 70, Riverside County Records.



Ties are to studs set in top of curb.
Set 3/4" I.P. Tagged R.E. 9876 at all points shown thus o.

ALBERT A. WEBB ASSOCIATES
F.B.
NO. 64-184

- ✗ FD. Ramset Nail on T/C
- FD. LD. & TK. on T/C
- FD. "C" Nail on T/C
- Set LD. & TK. on T/C

Scale:
Date:
Drawn by:
W.O.:
F.B.:

OFFICIAL TIE PLAT

CITY OF RIVERSIDE

These ties are for the purpose of perpetuating the found monumentation. No claim is made as to the relationship of the points or lines shown hereon to true boundary locations.

TRACT 3039

Sheet 1 of 1
File No.: