

6909. TIE

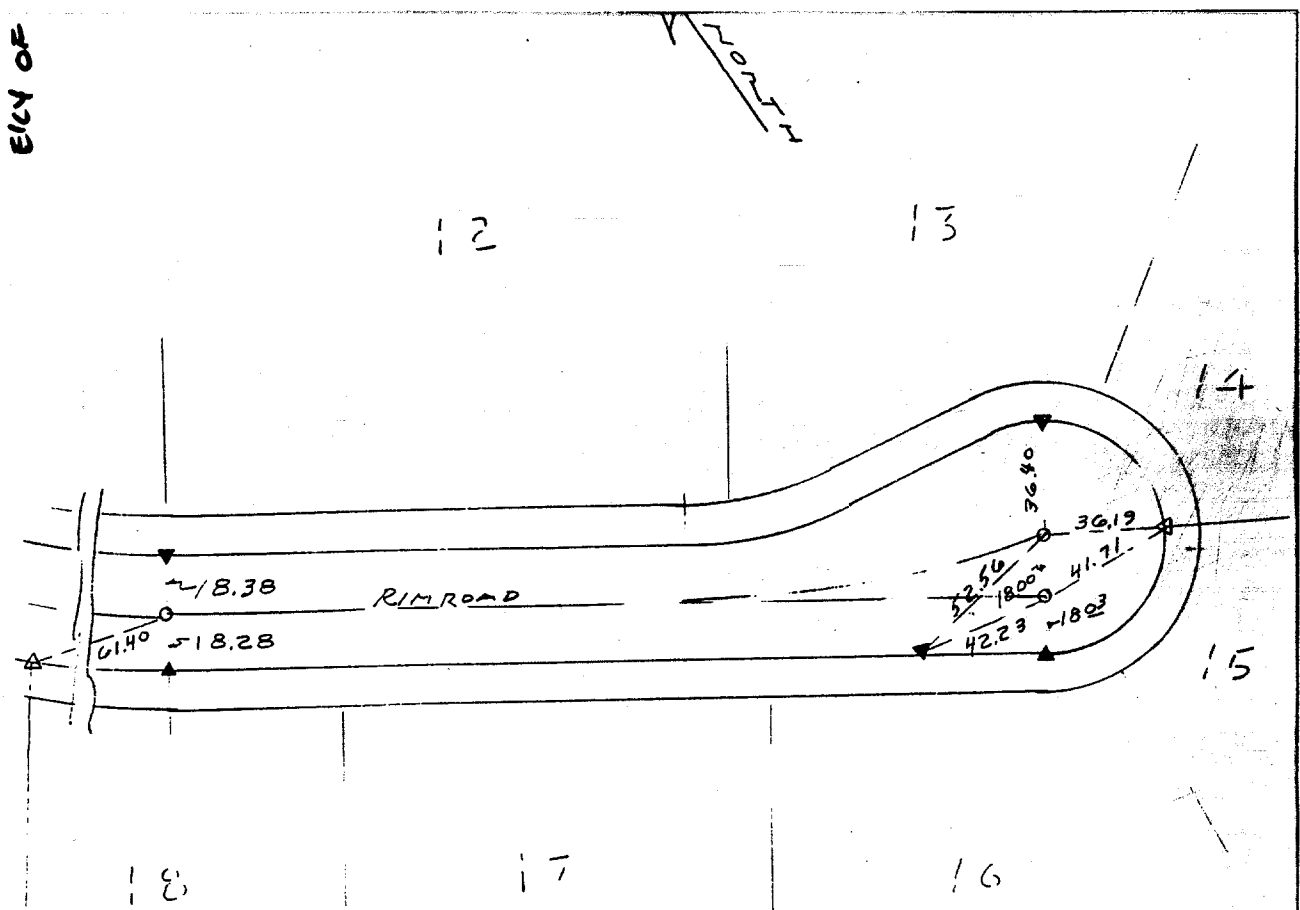
Street: *Rim Road*

OFFICIAL USE ONLY

X-Street:

Calde Sae

Ely of Oroco Dr.



- △ - SET N & TAG RCE 11842 ON T.C. ■ LOT LINE PROJECTED
- ▲ - SET "RAMSET" NAIL

- - SET 1" I.P. TAGGED RCE 11842
- - FOUND MONUMENT

Tr # 19851

SCALE: 1" = 50'	OFFICIAL TIE PLAT CITY OF RIVERSIDE	SHEET 4
DATE: 12-12-94		
DR. BY: DB	ALBERT A. WEBB ASSOCIATES CIVIL ENGINEERS RIVERSIDE CALIFORNIA	OF 4 SHEETS
W.O.: 82-191		FILE NO.:
F.B.: 1059/36		

- ✕ FD. Ramset Nail on T/C
- FD. "C" Nail on T/C
- FD. LD. & TK. on T/C
- Set LD. & TK. on T/C

Scale:	OFFICIAL TIE PLAT CITY OF RIVERSIDE	
Date:		
Drawn by:	<i>These ties are for the purpose of perpetuating the found monumentation. No claim is made as to the relationship of the points or lines shown hereon to true boundary locations.</i>	Sheet 1 of 1
W.O.:		File No.:
F.B.:		