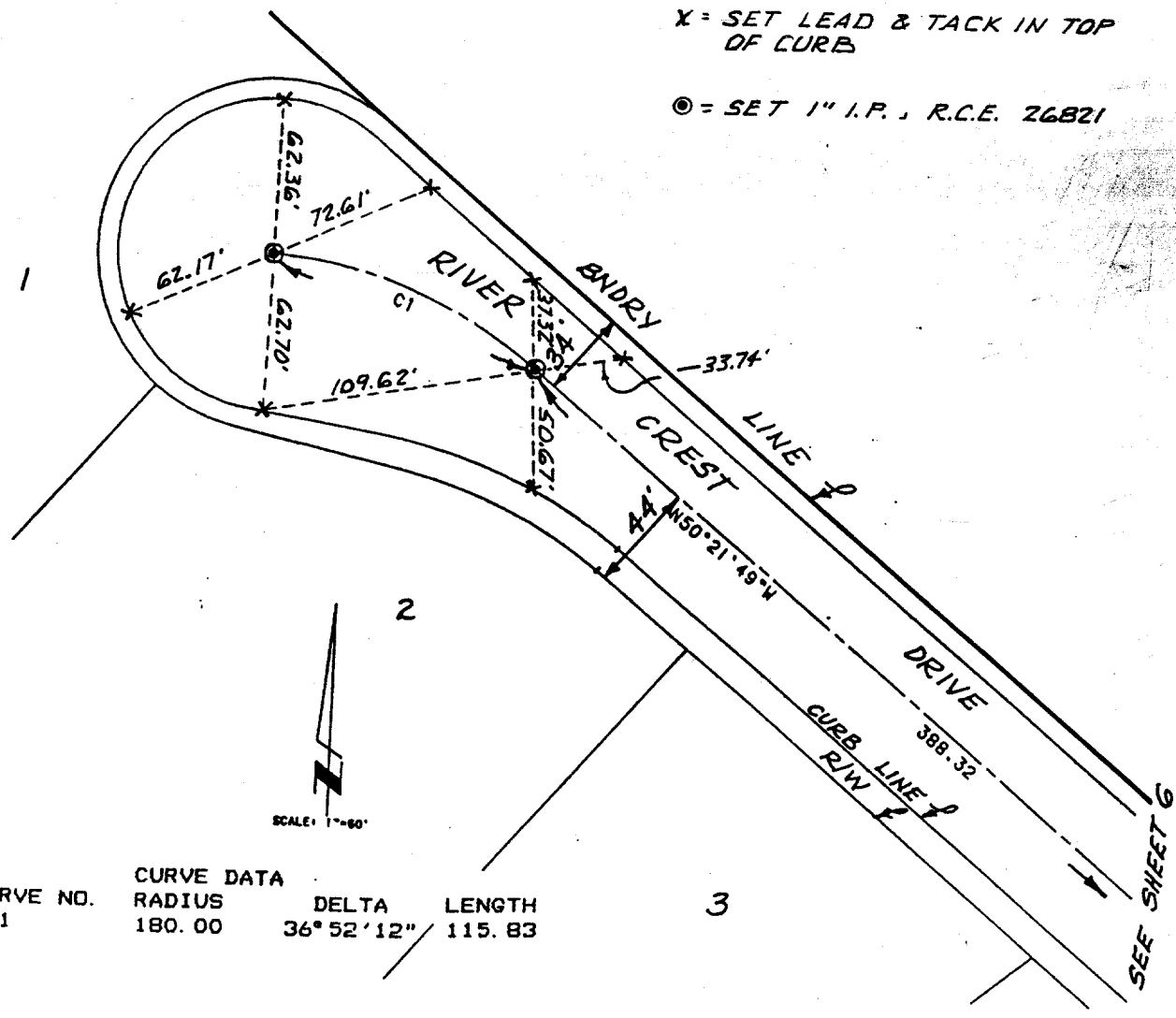


Street: Rivercrest Dr.
6922.77E OFFICIAL USE ONLY
 X-Street: Cul de Sac

CUL-DE-SAC - RIVER CREST DR. NLY OF FISHER RD

X = SET LEAD & TACK IN TOP OF CURB
 ● = SET 1" I.P., R.C.E. 26821



CURVE DATA			
CURVE NO.	RADIUS	DELTA	LENGTH
C1	180.00	36° 52' 12"	115.83

- ✕ FD. Ramset Nail on T/C
- FD. LD. & TK. on T/C
- FD. "C" Nail on T/C
- Set LD. & TK. on T/C

Scale:
 Date:
 Drawn by:
 W.O.:
 F.B.:

OFFICIAL TIE PLAT
CITY OF RIVERSIDE

These ties are for the purpose of perpetuating the found monumentation. No claim is made as to the relationship of the points or lines shown hereon to true boundary locations.

Sheet 1 of 1
 File No.: