

DATE 10-21-88

PARTY HOOD-SINLER  
BRUSSEAU



THE  
KEITH  
COMPANIES

200 Baker Street, Costa Mesa, CA 92626 (714) 540-0800

- Planning
- Site
- Surveying
- Landmarks
- Landmarks
- Landmarks
- Landmarks
- Landmarks
- Landmarks
- Landmarks

JOB No. 703-002/19

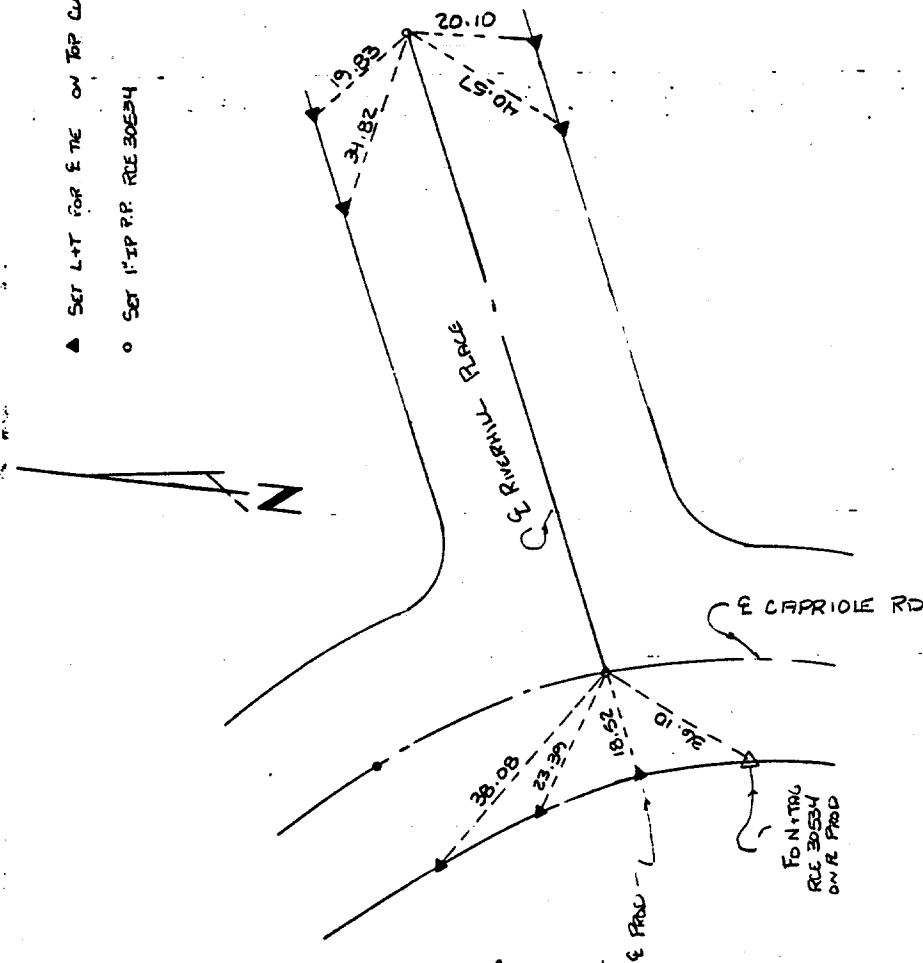
TRACT NO. PT 22580

PAGE 1 OF 1

JACKSON LAND RIVERHILL II  
& TIES

CAPRIOLE RD.

- ▲ SET L+T FOR E TIE ON TOP CURB
- SET 1" IP P.P. R/OE 306534



- × FD. Ramset Nail on T/C
- FD. "C" Nail on T/C

- FD. LD. & TK. on T/C
- Set LD. & TK. on T/C

Street: Riverhill Pl.  
6931.TIF  
X-Street: Elyof Capriole Rd  
OFFICIAL USE ONLY

Scale:

Date:

Drawn by:

W.O.:

F.B.:

# OFFICIAL TIE PLAT

## CITY OF RIVERSIDE

*These ties are for the purpose of perpetuating the found monumentation. No claim is made as to the relationship of the points or lines shown hereon to true boundary locations.*

Sheet 1 of 1

File No.: