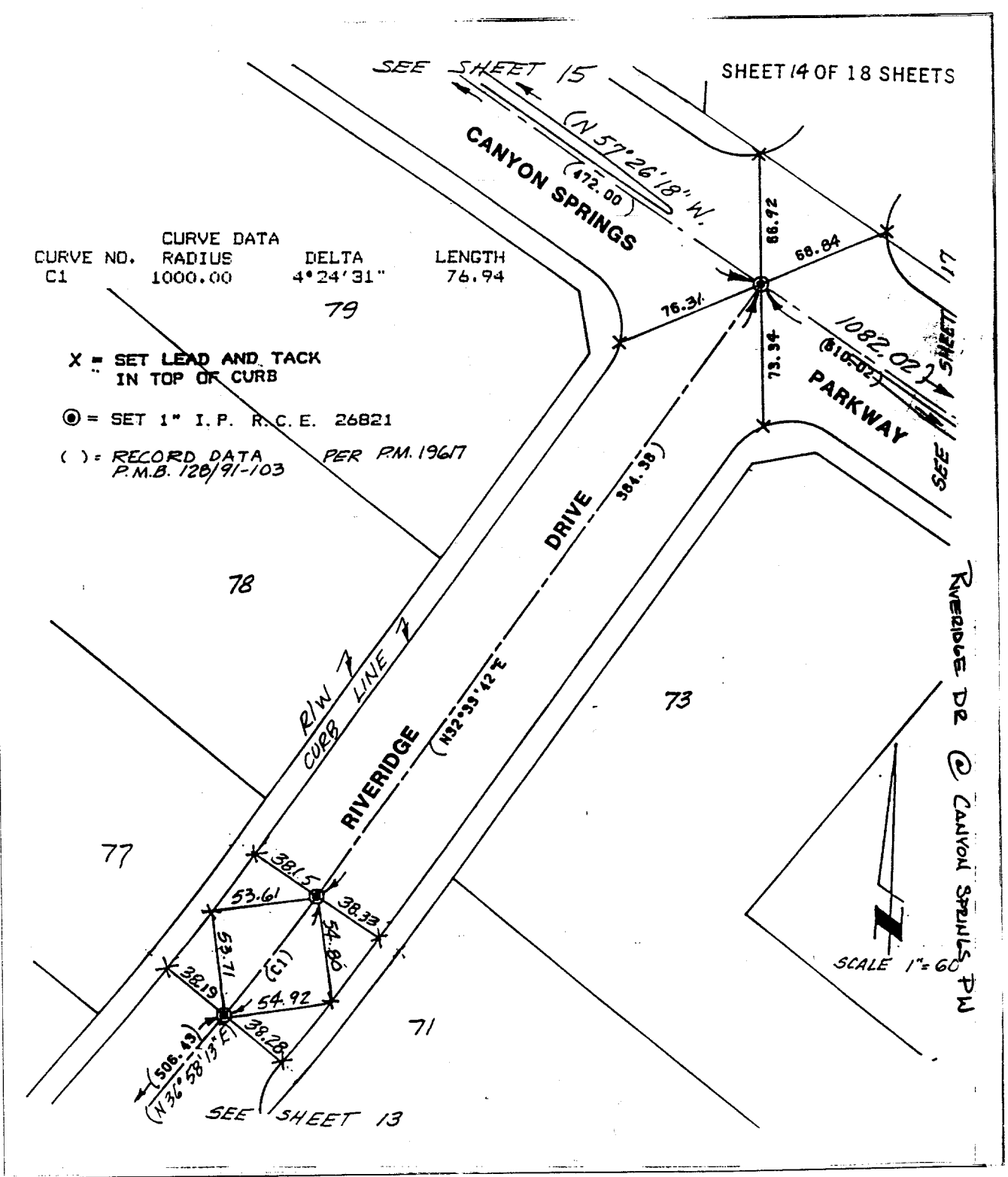


Street: Riveridge Dr
6933.77E

OFFICIAL USE ONLY

X-Street: S'y of Canyon Springs Pkwy



CURVE NO.	RADIUS	DELTA	LENGTH
C1	1000.00	4° 24' 31"	76.94

79

X = SET LEAD AND TACK
 IN TOP OF CURB

● = SET 1" I. P. R.C.E. 26821

() = RECORD DATA PER P.M. 1967
 P.M.B. 128/91-103

× FD. Ramset Nail on T/C
 ■ FD. "C" Nail on T/C

● FD. LD. & TK. on T/C
 ○ Set LD. & TK. on T/C

Scale:
 Date:
 Drawn by:
 W.O.:
 F.B.:

OFFICIAL TIE PLAT

CITY OF RIVERSIDE

These ties are for the purpose of perpetuating the found monumentation. No claim is made as to the relationship of the points or lines shown hereon to true boundary locations.

Sheet 1 of 1
 File No.: