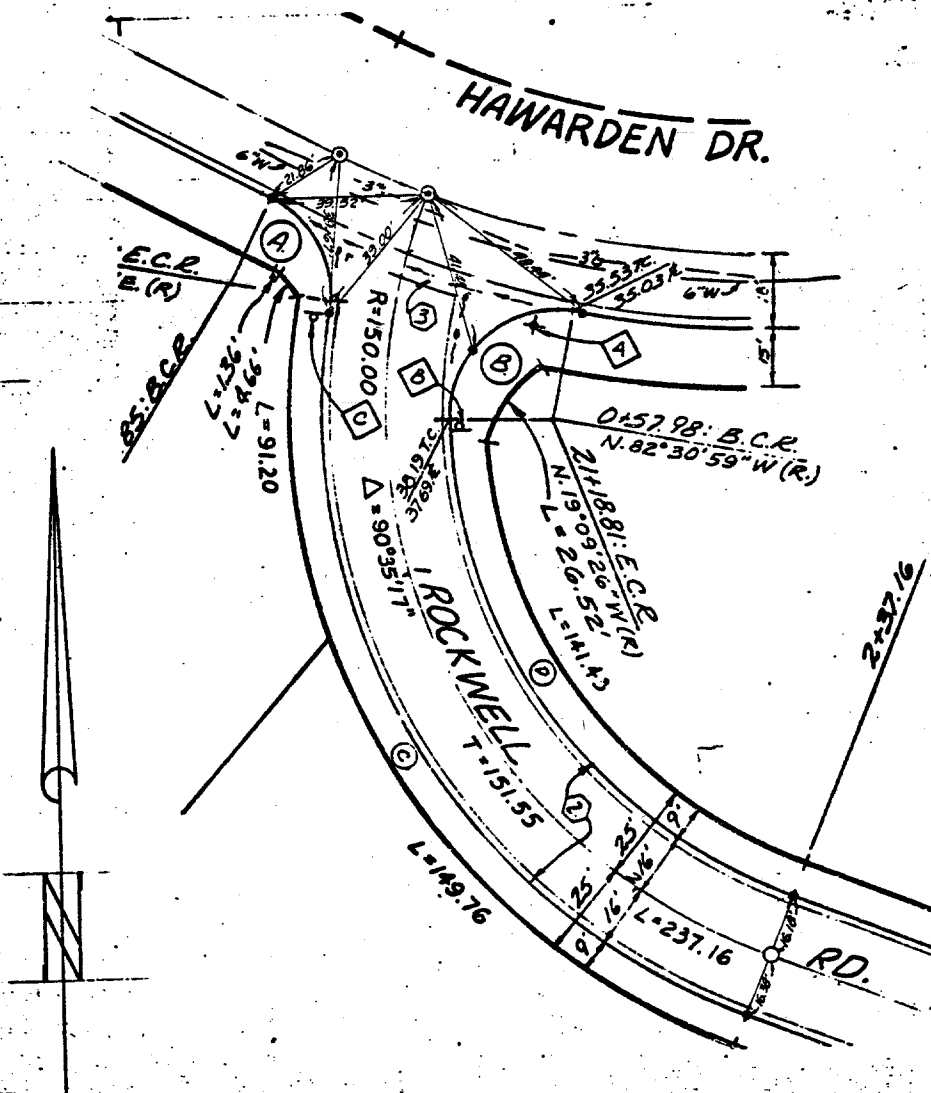


Street: Rockwell Rd
6954.TIF

X-Street: S'y of Hawarden Dr.
 OFFICIAL USE ONLY



- Indicates Set Nail on Curb.
- Indicates 3/4" I.P. with plastic plug stamped R.C.E. 862, Flush
- ⊙ Indicates 1 1/2" Brass Cap stamped R.C.E. 862, Flush

J&E DAVIDSON ASSOCIATES

MONUMENT TIES

SHEET NO. 2 OF 4
 DATE 3/11/79

- ✕ FD. Ramset Nail on T/C
- FD. LD. & TK. on T/C
- FD. "C" Nail on T/C
- Set LD. & TK. on T/C

OFFICIAL TIE PLAT
CITY OF RIVERSIDE

These ties are for the purpose of perpetuating the found monumentation. No claim is made as to the relationship of the points or lines shown hereon to true boundary locations.

Sheet 1 of 1
 File No.:

Scale:
 Date:
 Drawn by:
 W.O.:
 F.B.: