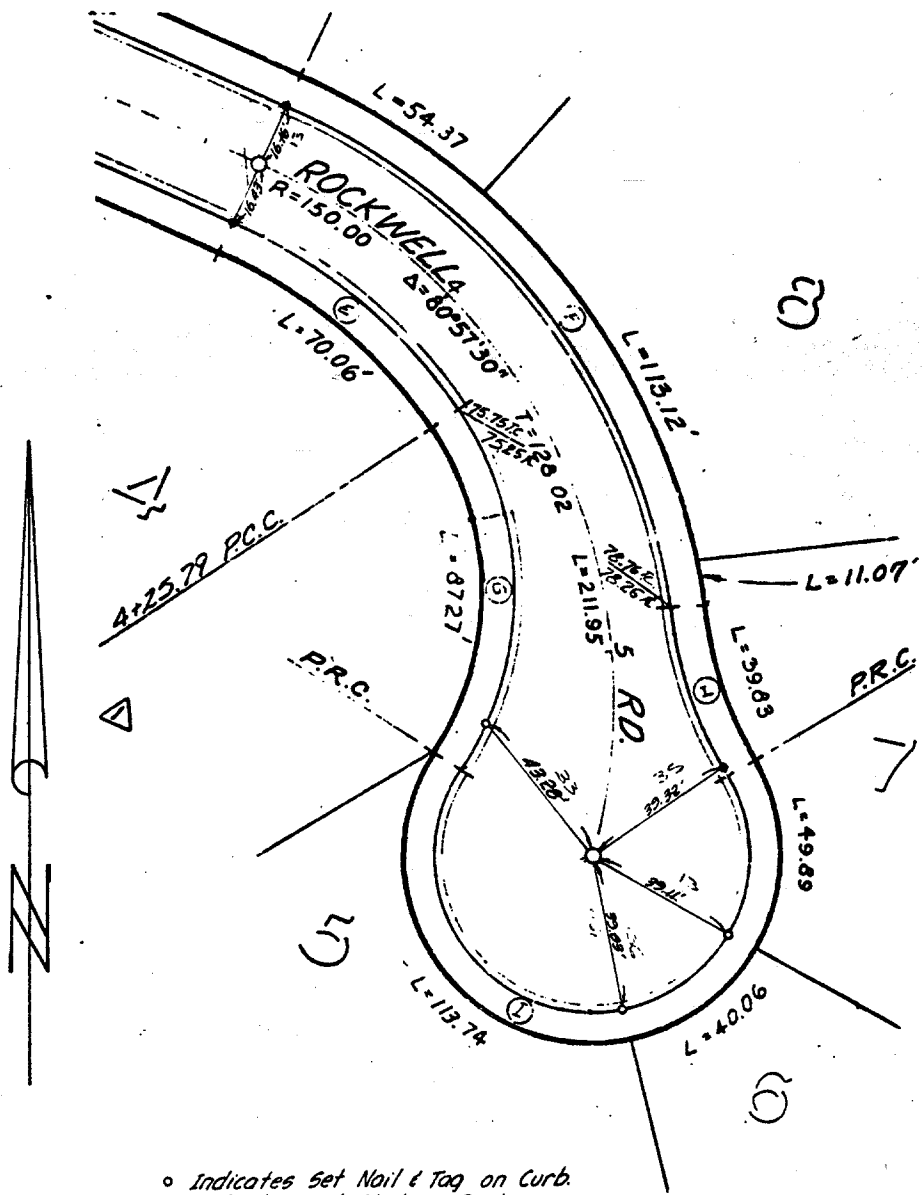


Street: Rockwell Rd  
6955. TIF

X-Street: Caldesac  
 OFFICIAL USE ONLY



- Indicates Set Nail & Tag on Curb.
- Indicates Set Nail on Curb.
- Indicates 3/4" I.P. with plastic plug stamped R.C.E. 862, Flush

J.F. DAVIDSON ASSOCIATES  
 3426 TENTH STREET  
 RIVERSIDE, CALIFORNIA

**MONUMENT TIES**  
 FOR TRACT 8116-1

SHEET NO. 1 OF 4  
 DATE 3/1/79  
 SCALE 1" = 40'

- ✕ FD. Ramset Nail on T/C
- FD. LD. & TK. on T/C
- FD. "C" Nail on T/C
- Set LD. & TK. on T/C

Scale:  
 Date:  
 Drawn by:  
 W.O.:  
 F.B.:

**OFFICIAL TIE PLAT**  
**CITY OF RIVERSIDE**

*These ties are for the purpose of perpetuating the found monumentation. No claim is made as to the relationship of the points or lines shown hereon to true boundary locations.*

Sheet 1 of 1  
 File No.: