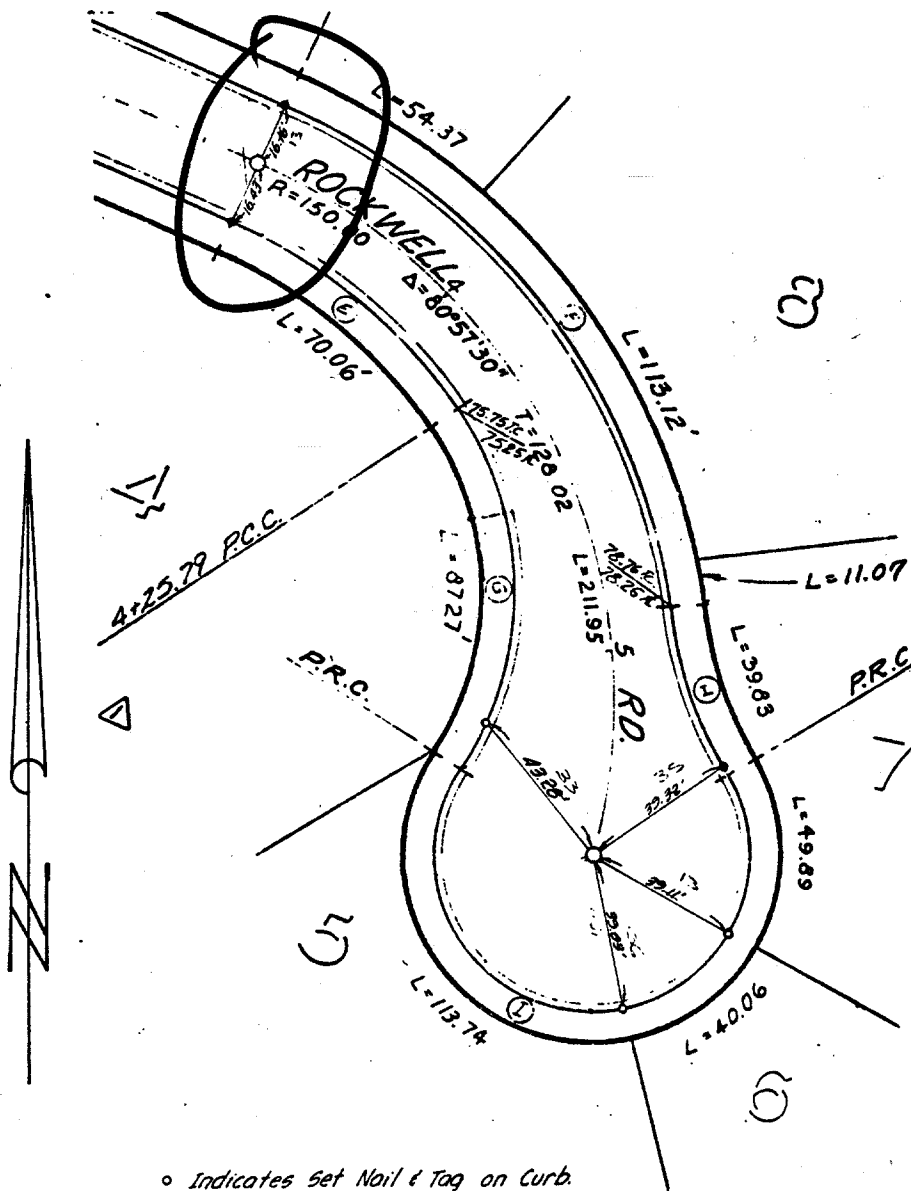


Street: Rockwell Rd
6956.71E
 OFFICIAL USE ONLY
 X-Street: Niy of Cal de sne



- Indicates Set Nail & Tag on Curb.
- Indicates Set Nail on Curb.
- Indicates 3/4" I.P. with plastic plug stamped R.C.E. 062, Flush

J.F. DAVIDSON ASSOCIATES
 3426 TENTH STREET
 RIVERSIDE, CALIFORNIA

MONUMENT TIES
 FOR TRACT 8116-1

SHEET NO. 1 OF 4
 DATE 3/1/79
 SCALE 1" = 40'

- ✕ FD. Ramset Nail on T/C
- FD. LD. & TK. on T/C
- FD. "C" Nail on T/C
- Set LD. & TK. on T/C

Scale:

Date:

Drawn by:

W.O.:

F.B.:

OFFICIAL TIE PLAT
 CITY OF RIVERSIDE

These ties are for the purpose of perpetuating the found monumentation. No claim is made as to the relationship of the points or lines shown hereon to true boundary locations.

Sheet 1 of 1

File No.: