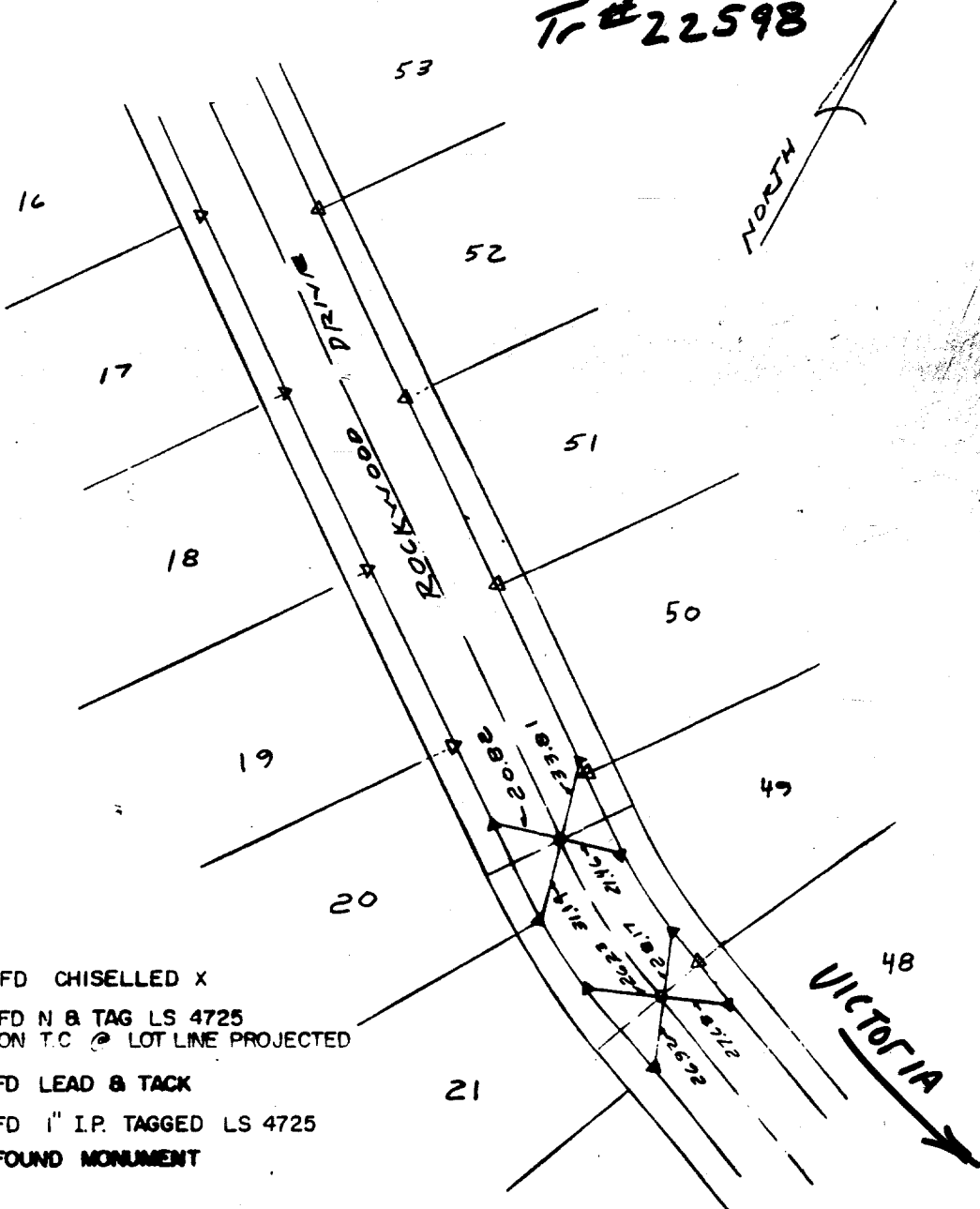


OK. 00000000

Tr # 22598



- FD CHISELLED X
- △ FD N & TAG LS 4725 ON T.C @ LOT LINE PROJECTED
- ▲ FD LEAD & TACK
- FD 1" I.P. TAGGED LS 4725
- FOUND MONUMENT

SCALE: 1" = 60'
 DATE: 2-21-94
 DR. BY: DB
 I.O.: 74-96
 F.B.: 1994-96

OFFICIAL TIE PLAT
CITY OF RIVERSIDE
 ALBERT A. WEBB ASSOCIATES
 CIVIL ENGINEERS
 RIVERSIDE CALIFORNIA

SHEET 3
 OF 6 SHEETS
 FILE NO.:

- ✕ FD. Ramset Nail on T/C
- FD. LD. & TK. on T/C
- FD. "C" Nail on T/C
- Set LD. & TK. on T/C

Scale:
 Date:
 Drawn by:
 W.O.:
 F.B.:

OFFICIAL TIE PLAT
CITY OF RIVERSIDE
These ties are for the purpose of perpetuating the found monumentation. No claim is made as to the relationship of the points or lines shown hereon to true boundary locations.

Sheet 1 of 1
 File No.:

Street: Rockwood Dr.
6960.71E
 X-Street: NW 1/4 of Victoria Ave
 OFFICIAL USE ONLY B.C.