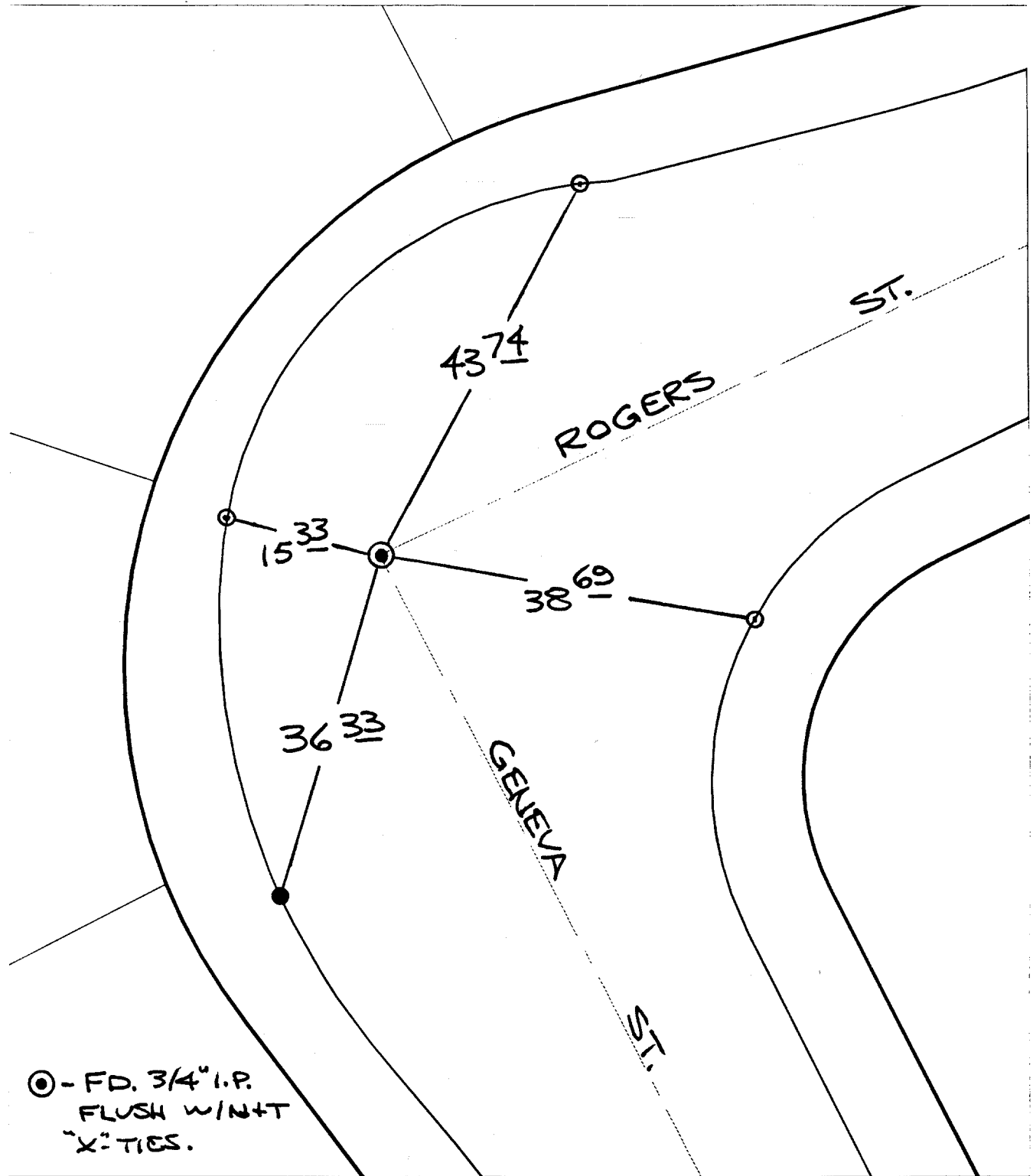


Street: **6967.71E**  
**ROGERS ST.**

**X-Street:**  
OFFICIAL USE ONLY

**GENEVA ST.**



⊙ - FD. 3/4" I.P.  
FLUSH W/INT  
"X" TIES.

× FD. Ramset Nail on T/C  
■ FD. "C" Nail on T/C

● FD. LD. & TK. on T/C  
○ Set LD. & TK. on T/C

Scale: 1" = 15'

Date: 08/24/99 *LH*

Drawn by: L. Harris

W.O.:

F.B.:

# OFFICIAL TIE PLAT

## CITY OF RIVERSIDE

*These ties are for the purpose of perpetuating the found monumentation. No claim is made as to the relationship of the points or lines shown hereon to true boundary locations.*



Sheet 2 of 2

File No.: