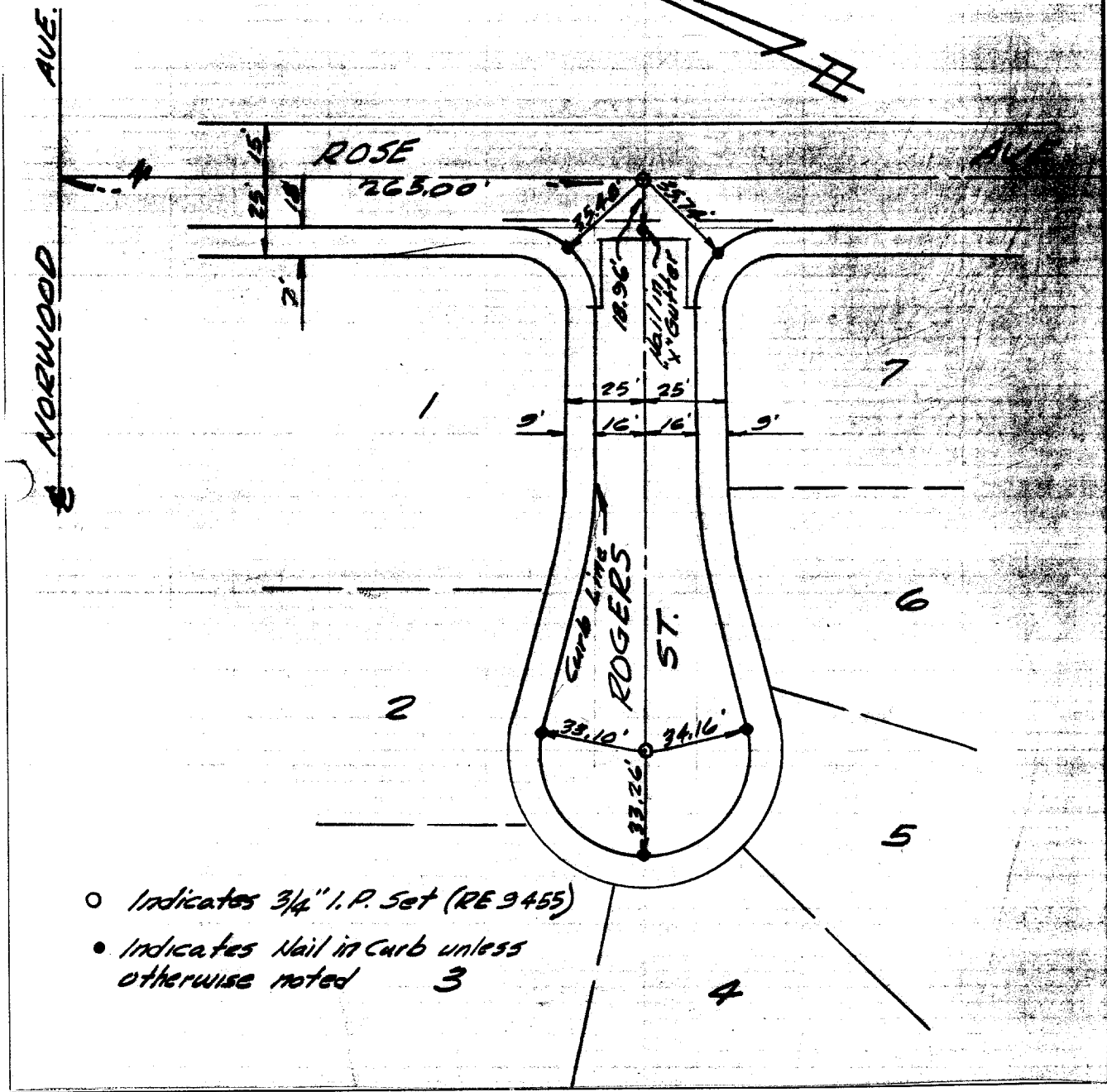


Street: Rogers St.
6968 TIF
 X-Street: Rose Ave &
Calde Sac

OFFICIAL USE ONLY

T. # 2951



- Indicates 3/4" I.P. Set (RE 9455)
- Indicates Nail in Curb unless otherwise noted

- × FD. Ramset Nail on T/C
- FD. LD. & TK. on T/C
- FD. "C" Nail on T/C
- Set LD. & TK. on T/C

OFFICIAL TIE PLAT
CITY OF RIVERSIDE

These ties are for the purpose of perpetuating the found monumentation. No claim is made as to the relationship of the points or lines shown hereon to true boundary locations.

Scale:
 Date:
 Drawn by:
 W.O.:
 F.B.:

Sheet 1 of 1
 File No.: