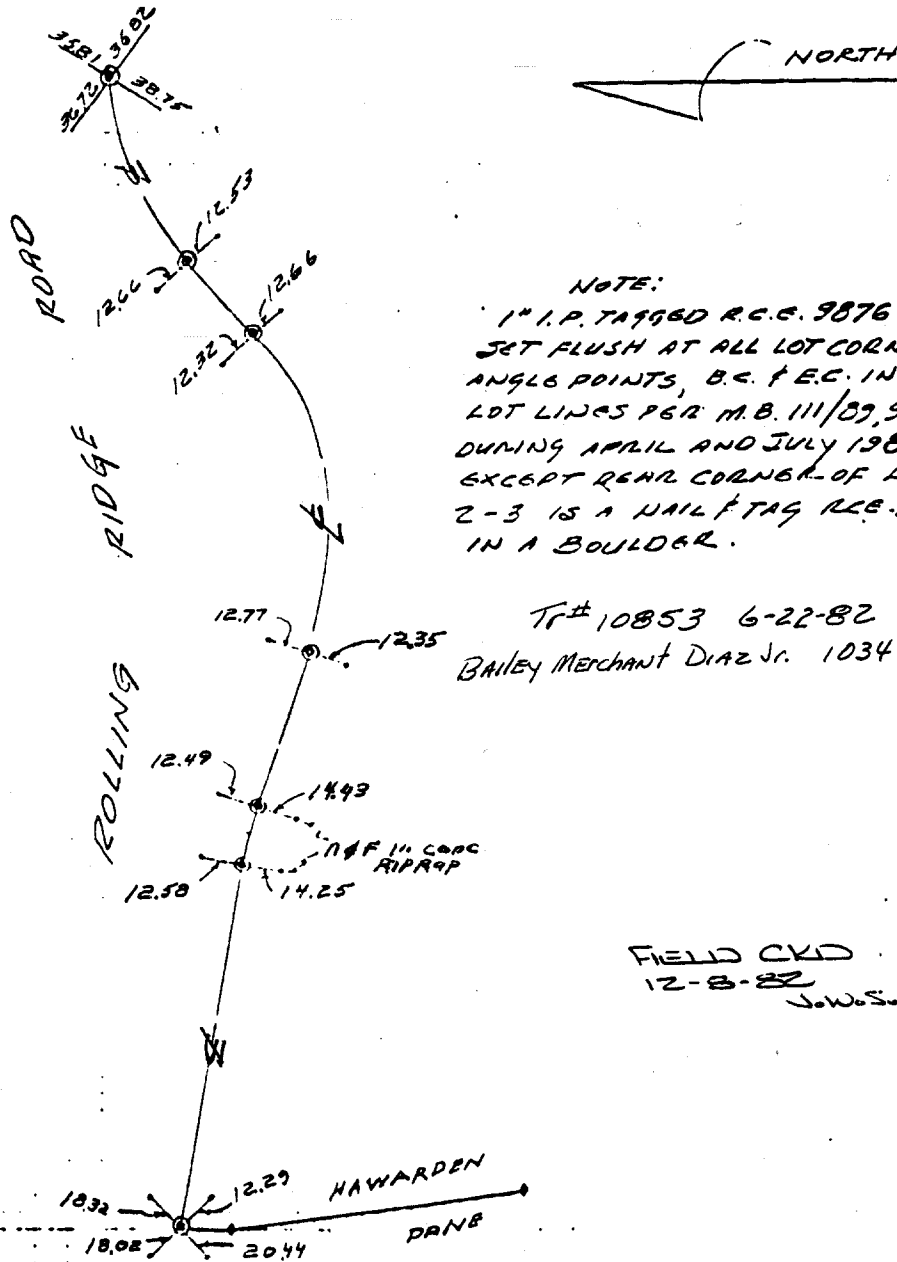


TIES ROLLING RIDGE ROAD
TR. 10853, M.B. 111/89.90



NOTE:
1" I.P. TAGGED R.C.C. 9876 WERE SET FLUSH AT ALL LOT CORNERS, ANGLE POINTS, B.C. & E.C. IN SIDE LOT LINES PER M.B. 111/89.90 DURING APRIL AND JULY 1981, EXCEPT REAR CORNER OF LOTS 2-3 IS A NAIL TAG R.C.C. 9876 IN A BOULDER.

Tr # 10853 6-22-82 77-228
Bailey Merchant Diaz Jr. 1034 213

Note
Ties set to R.R. in 1981 by the wife of the deceased
Sgt. J. P. R.C.E.
9876 Flush

FIELD CKD
12-8-88
J.W.S.

- ✕ FD. Ramset Nail on T/C
- FD. LD. & TK. on T/C
- FD. "C" Nail on T/C
- Set LD. & TK. on T/C

OFFICIAL TIE PLAT
CITY OF RIVERSIDE

These ties are for the purpose of perpetuating the found monumentation. No claim is made as to the relationship of the points or lines shown hereon to true boundary locations.

Scale:
Date:
Drawn by:
W.O.:
F.B.:

Sheet 1 of 1
File No.:

Street: Rolling Ridge Rd
6969.71E
OFFICIAL USE ONLY
X-Street: Ely of Haywardden