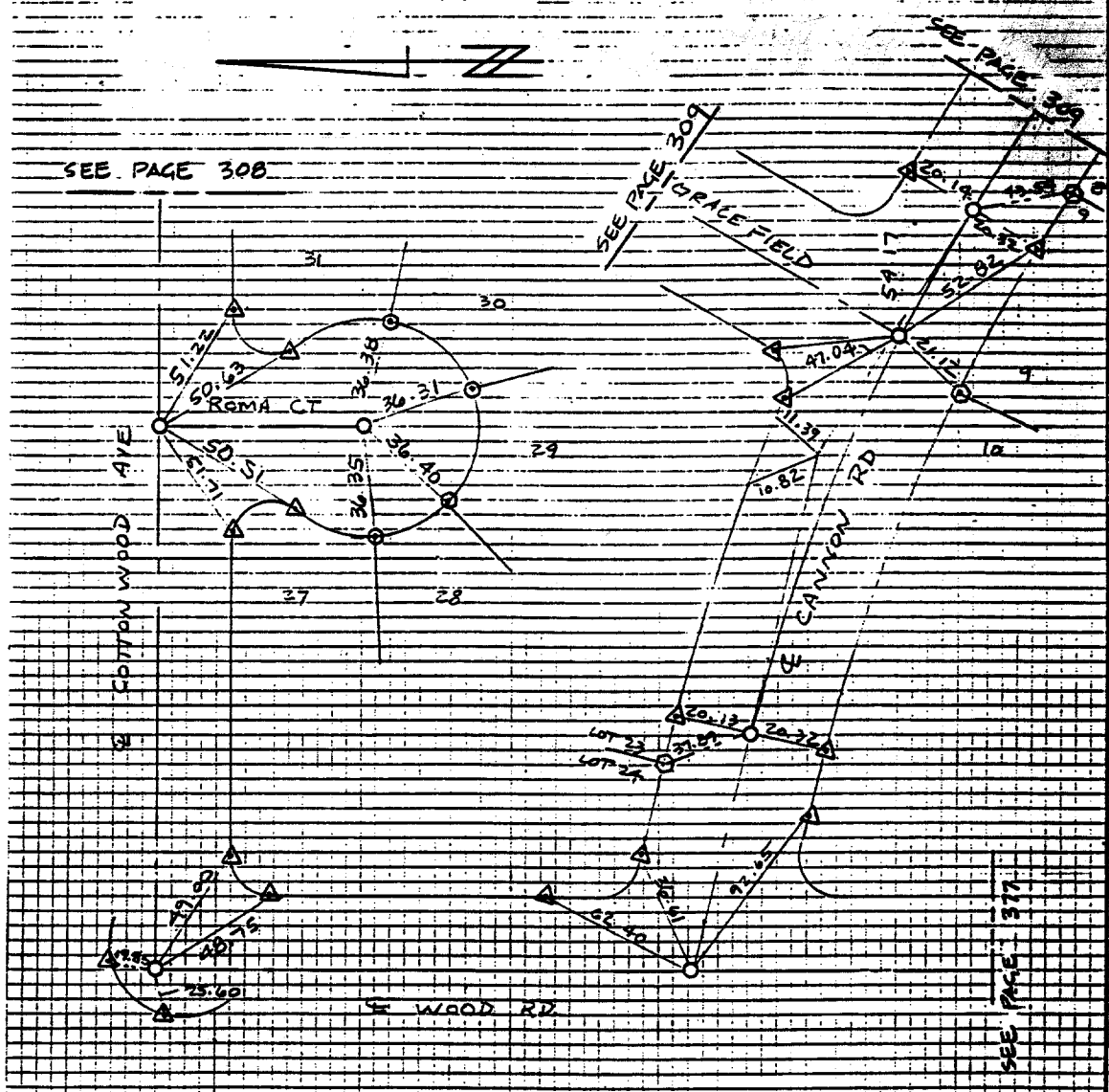


SURVEY OF TRACT NO 21403-4 & TIES
 FOR BROCK W.O.No. 9767 DATE 9-3-87
 SURVEY PARTY MCKEE, HOPKINS, CLOVER REF. _____ A.M. _____

- INDICATES FOUND I.P. W/PLASTIC PLUG, FLUSH, L.S. 3018
- INDICATES SET I.P. W/PLASTIC PLUG, FLUSH, L.S. 3018
- △ SET RAMSET NAIL IN T.C. TAGGED L.S. 3018
- ⊙ SET RAMSET NAIL IN T.C. TAGGED L.S. 3018 ON PE PROD

SURVEY NOTES



Street: Roma Ct
6970.TIF
 X-Street: Cul de Sac
 OFFICIAL USE ONLY

- ✕ FD. Ramset Nail on T/C
- FD. LD. & TK. on T/C
- FD. "C" Nail on T/C
- Set LD. & TK. on T/C

Scale:
 Date:
 Drawn by:
 W.O.:
 F.B.:

OFFICIAL TIE PLAT CITY OF RIVERSIDE

These ties are for the purpose of perpetuating the found monumentation. No claim is made as to the relationship of the points or lines shown hereon to true boundary locations.

Sheet 1 of 1
 File No.: