

SWING TIES

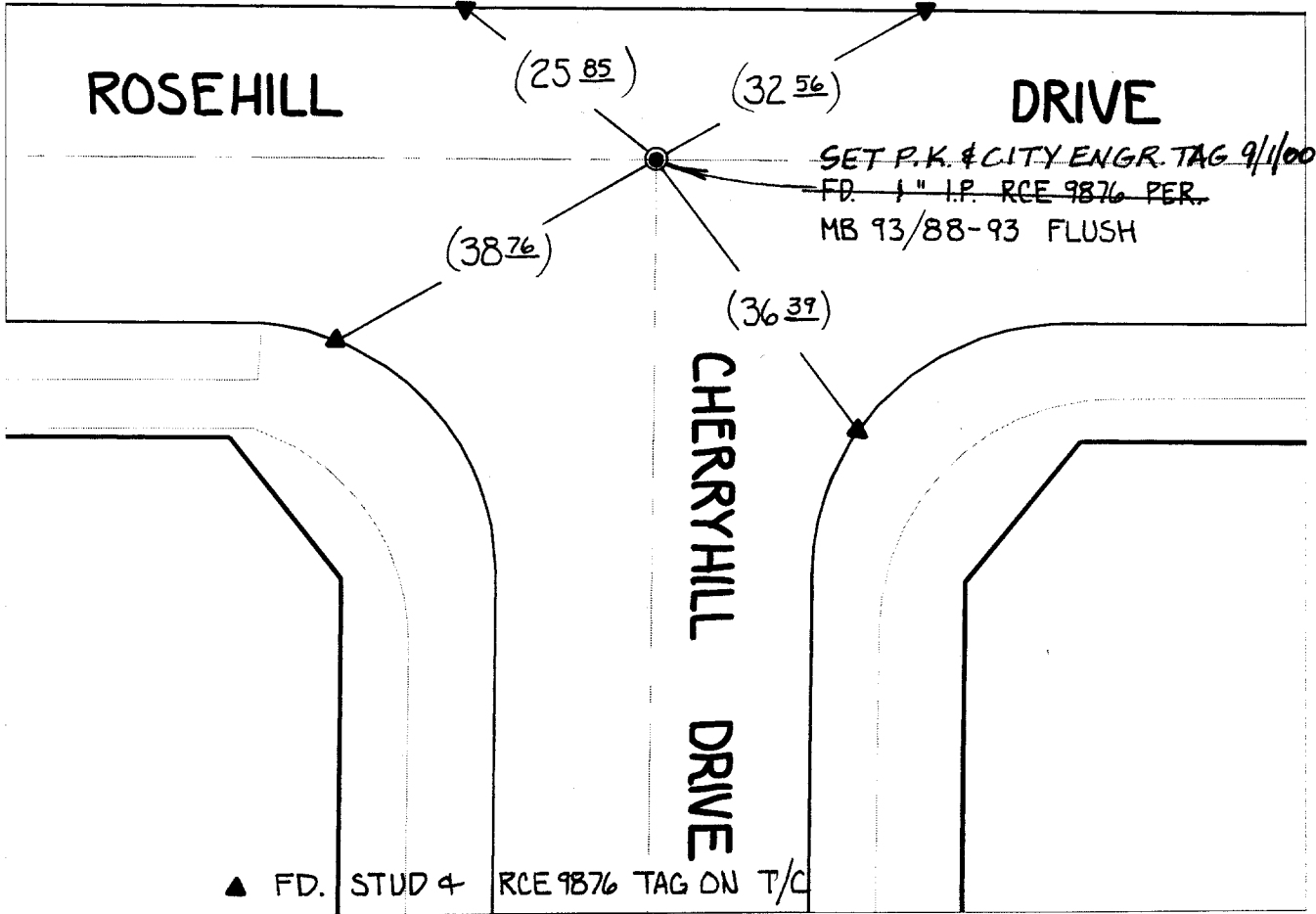
HISTORICAL DATA

- MB 93/88-93
 - TIE SHT. FOR TR 7924-1
 FROM WEBB ASSOC.

**NOTE: P.K. AND CITY ENGINEER TAG TO BE SET @ SURFACE AFTER STREET CONSTRUCTION IS COMPLETE. (IF POSSIBLE)*

INDICATES REC. DIST. PER. WEBB ASSOC.
 TIE SHT. FOR TR 7924-1

Street: **6980.TIE**
ROSEHILL DRIVE
 X-Street: **CHERRYHILL DRIVE**
 OFFICIAL USE ONLY



▲ FD. STUD & RCE 9876 TAG ON T/C

× FD. Ramset Nail on T/C
 ■ FD. "C" Nail on T/C

● FD. LD. & TK. on T/C
 ○ Set LD. & TK. on T/C

Scale: 1" = 20'

Date: 06/15/00

Drawn by: SURVEY

W.O.:

F.B.:

OFFICIAL TIE PLAT CITY OF RIVERSIDE

These ties are for the purpose of perpetuating the found monumentation. No claim is made as to the relationship of the points or lines shown hereon to true boundary locations.



Sheet 1 of 1

File No.: