

SWING TIES

HISTORICAL DATA

-MB 43/87-88

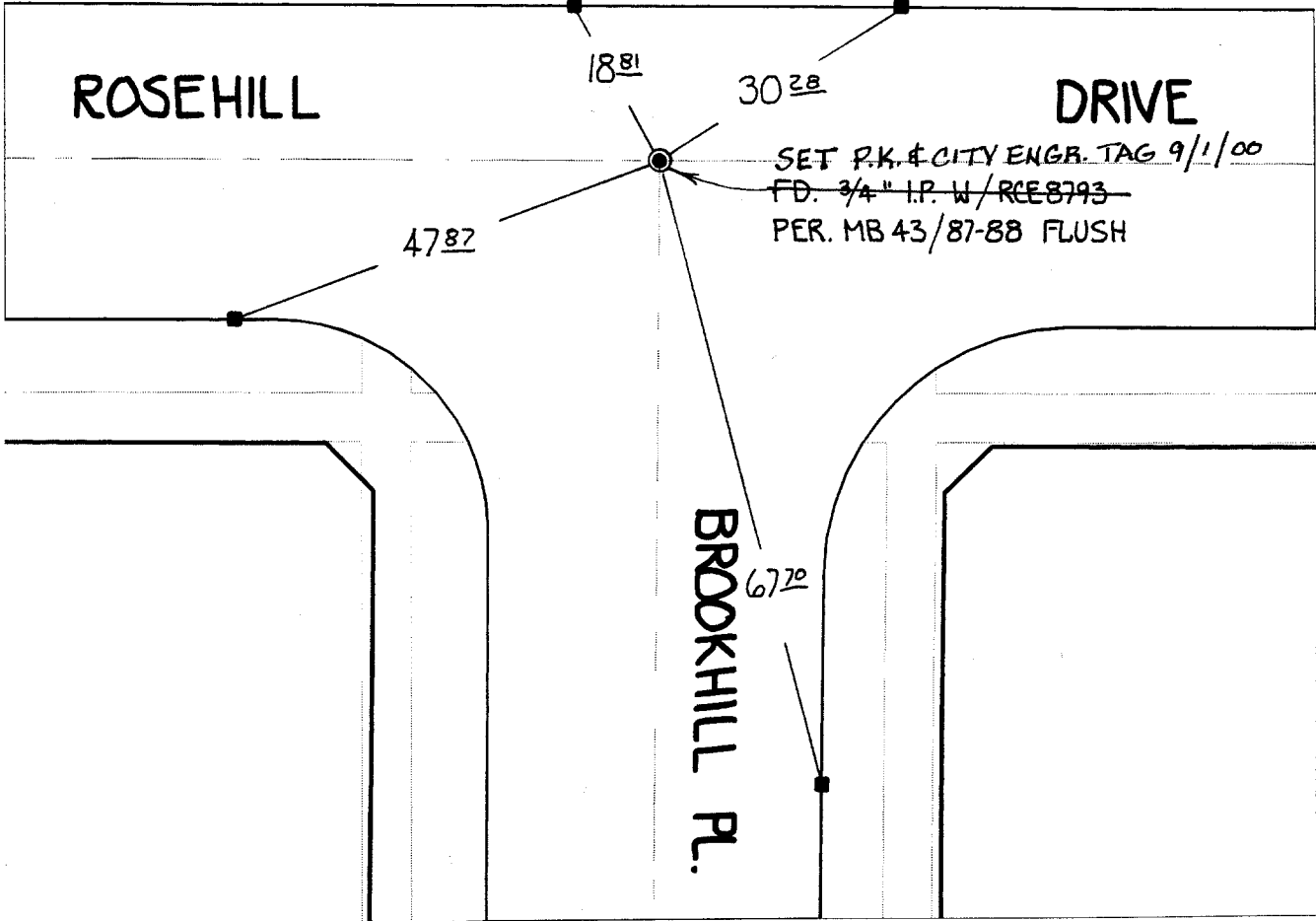
**NOTE: P.K. AND CITY ENGINEER TAG TO BE SET @ SURFACE AFTER STREET CONSTRUCTION IS COMPLETE. (IF POSSIBLE)*

Street: **6981 TIE**

ROSEHILL DRIVE

X-Street: **OFFICIAL USE ONLY**

BROOKHILL PLACE



✕ FD. Ramset Nail on T/C
 ■ FD. "C" Nail on T/C

● FD. LD. & TK. on T/C
 ○ Set LD. & TK. on T/C

Scale: 1" = 20'
 Date: 06/15/00
 Drawn by: SURVEY
 W.O.:
 F.B.:

OFFICIAL TIE PLAT CITY OF RIVERSIDE

These ties are for the purpose of perpetuating the found monumentation. No claim is made as to the relationship of the points or lines shown hereon to true boundary locations.



Sheet 1 of 1
 File No.: