

SWING TIES

HISTORICAL DATA

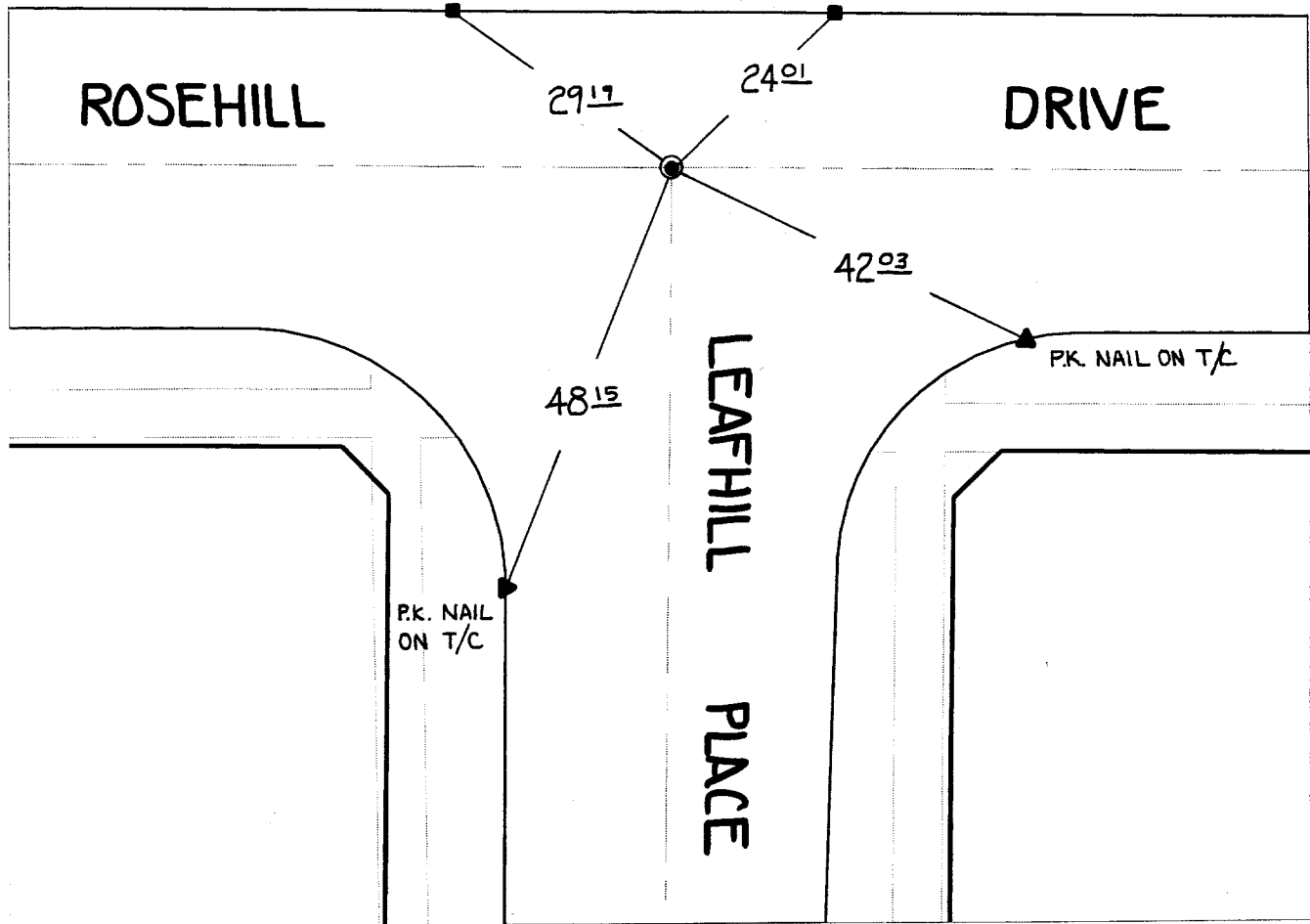
-MB 43/87-88

NOTE:

● FD. ~~3/4" I.P. W/RCE 8793 TAG SET P.K. & CITY~~
 PER. MB 43/87-88 ENGR. TAG 9/1/00

*NOTE: P.K. AND CITY ENGINEER TAG TO BE SET @ SURFACE AFTER
 STREET CONSTRUCTION IS COMPLETE. (IF POSSIBLE)

Street: **6982.TIF** ROSEHILL DRIVE
 X-Street: LEAFHILL PLACE
 OFFICIAL USE ONLY



- ✕ FD. Ramset Nail on T/C
- FD. LD. & TK. on T/C
- FD. "C" Nail on T/C
- Set LD. & TK. on T/C

Scale: 1" = 20'

Date: 06/14/00

Drawn by: SURVEY

W.O.:

F.B.:

OFFICIAL TIE PLAT

CITY OF RIVERSIDE

*These ties are for the purpose of perpetuating the found
 monumentation. No claim is made as to the relationship of
 the points or lines shown hereon to true boundary locations.*



Sheet 1 of 1

File No.: