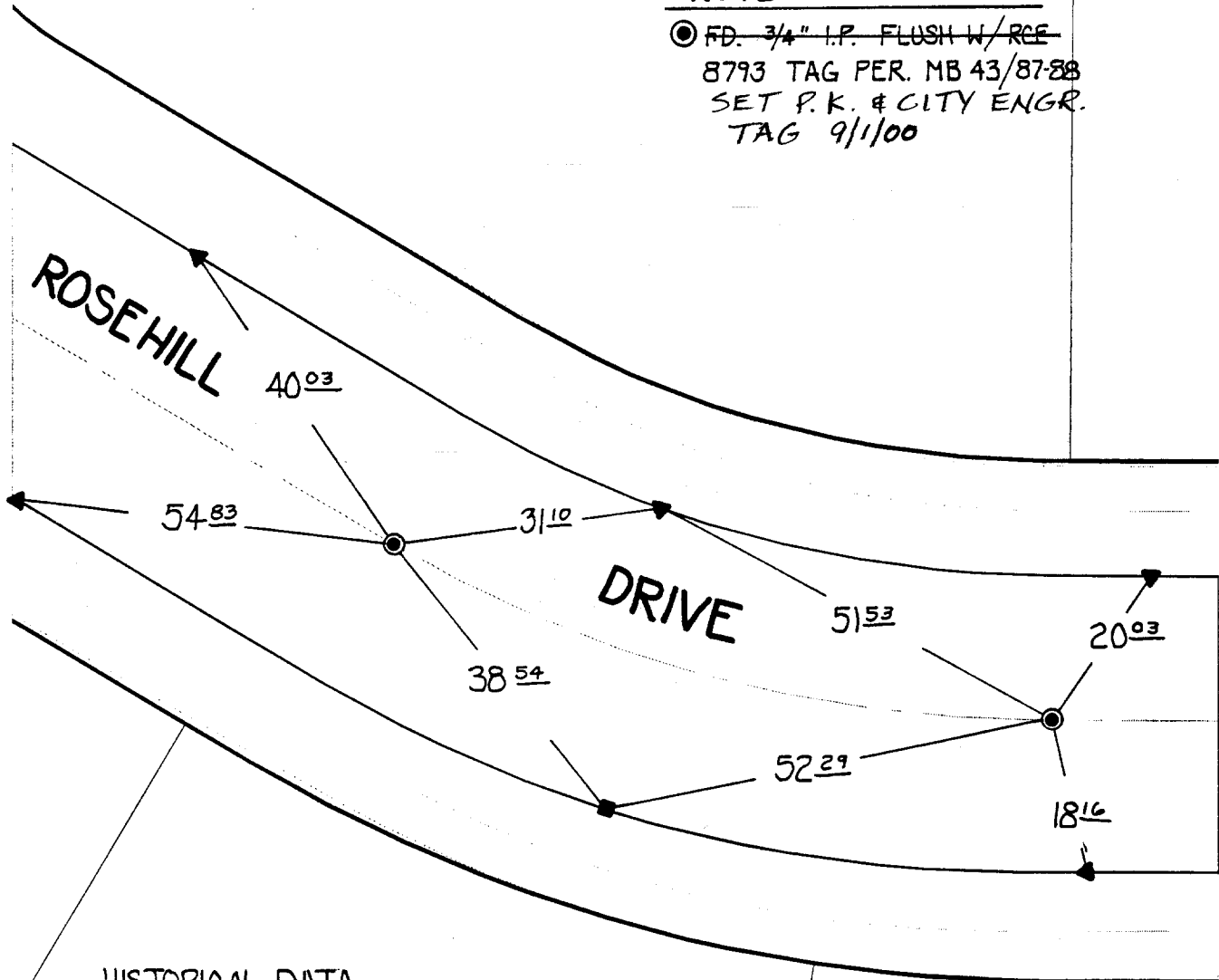


# SWING TIES

Street: **6983.T/F**  
**ROSEHILL DRIVE**  
 X-Street: **W. OF LEAFHILL PLACE**  
 OFFICIAL USE ONLY

**NOTE:**

● FD. 3/4" I.P. FLUSH W/RCE  
 8793 TAG PER. MB 43/87-88  
 SET P.K. & CITY ENGR.  
 TAG 9/1/00



HISTORICAL DATA

-MB 43/87-88

*NOTE: P.K. AND CITY ENGINEER TAG TO BE SET @ SURFACE AFTER STREET CONSTRUCTION IS COMPLETE. (IF POSSIBLE)*

- ▲ FD. P.K. NAIL ON T/C
- × FD. Ramset Nail on T/C
- FD. LD. & TK. on T/C
- FD. "C" Nail on T/C
- Set LD. & TK. on T/C

Scale: 1" = 20'

Date: 06/14/00

Drawn by: SURVEY

W.O.:

F.B.:

## OFFICIAL TIE PLAT

### CITY OF RIVERSIDE

*These ties are for the purpose of perpetuating the found monumentation. No claim is made as to the relationship of the points or lines shown hereon to true boundary locations.*



Sheet 1 of 1

File No.: