

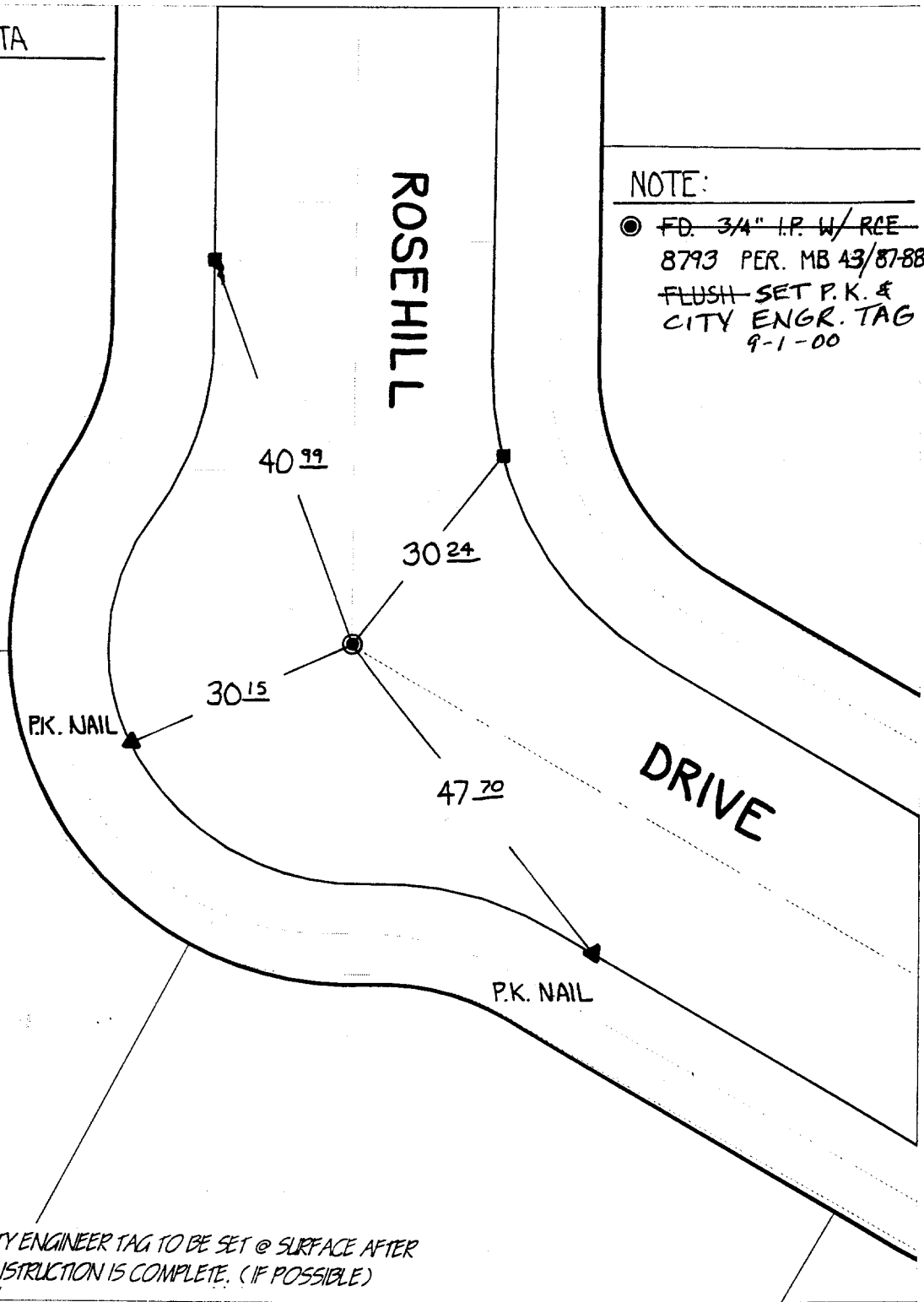
SWING TIES

HISTORICAL DATA

-MB 43/87-88

NOTE:

● FD. 3/4" I.P. W/RCE
8793 PER. MB 43/87-88
~~FLUSH SET P.K. &~~
CITY ENGR. TAG
9-1-00



NOTE: P.K. AND CITY ENGINEER TAG TO BE SET @ SURFACE AFTER STREET CONSTRUCTION IS COMPLETE. (IF POSSIBLE)

✕ FD. Ramset Nail on T/C
■ FD. "C" Nail on T/C

● FD. LD. & TK. on T/C
○ Set LD. & TK. on T/C

Street: **6984 TIE** ROSEHILL DRIVE
 X-Street: S. OF LE CONTE DR.
 OFFICIAL USE ONLY

Scale: 1" = 20'
 Date: 06/14/00
 Drawn by: SURVEY
 W.O.:
 F.B.:

OFFICIAL TIE PLAT CITY OF RIVERSIDE

These ties are for the purpose of perpetuating the found monumentation. No claim is made as to the relationship of the points or lines shown hereon to true boundary locations.



Sheet 1 of 1
 File No.: