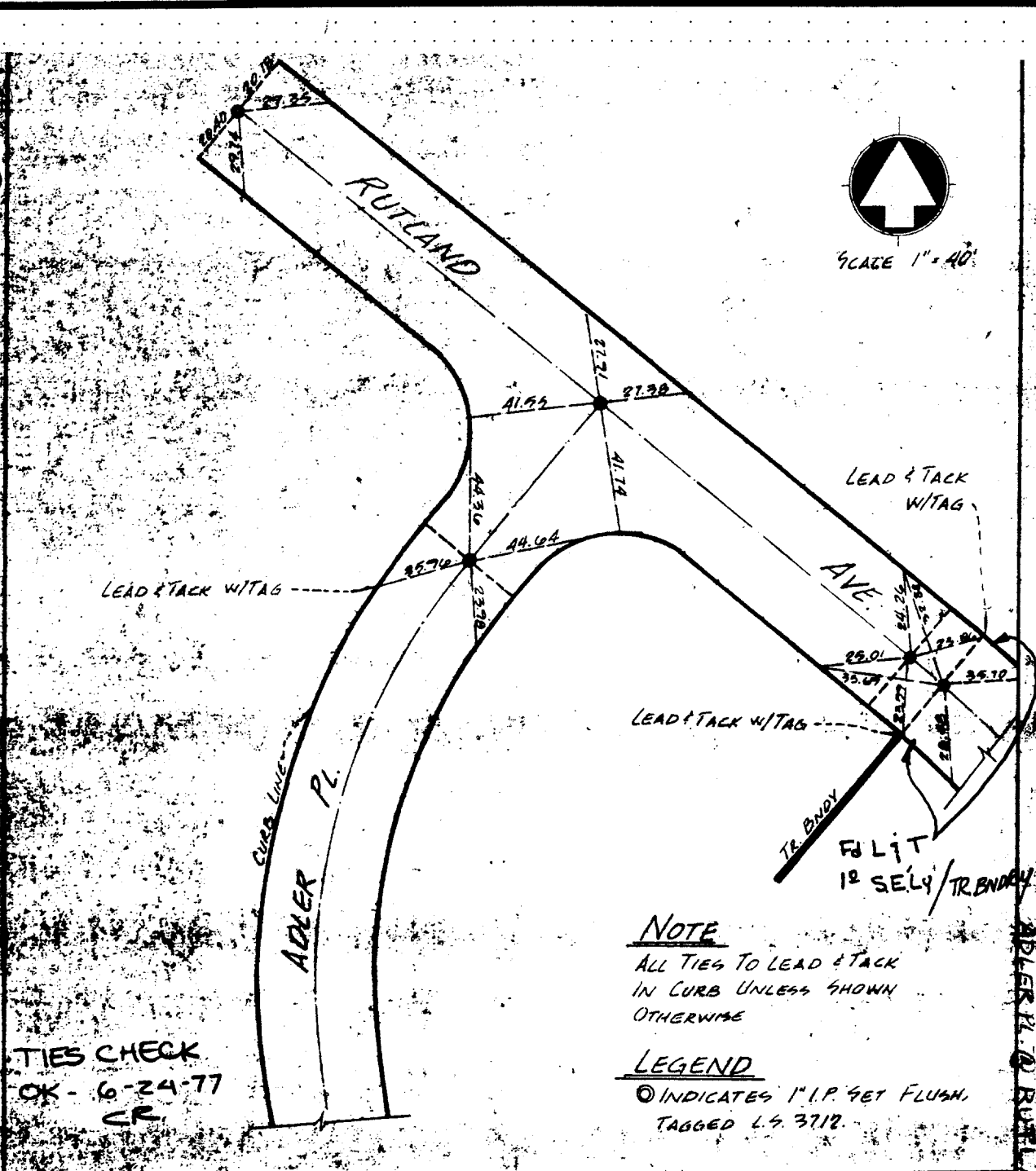


STREET ADLER PL. X-STREET RUTLAND AVE OFFICE USE ONLY

70.71F



CENTERLINE TIES
TRACT 5104-5

MAXWELL, BROWN & MULLINS
PLANNING ENGINEERING SURVEYING
1771 No. D St., San Bernardino, California 92405
SCALE: 1" = 40' JOB NO. 75-B-3

- ✕ FD. Ramset Nail on T/C
- FD. LD. & TK. on T/C
- FD. "C" Nail on T/C
- SET LD. & TK. On T/C

SCALE:
DATE:
DR. BY:
W.O.:
F.B.:

OFFICIAL TIE PLAT
CITY OF RIVERSIDE
These ties are for the purpose of perpetuating the found monumentation. No claim is made as to the relationship of the points or lines shown hereon to true boundary locations.

SHEET
OF SHEETS
FILE NO.: