

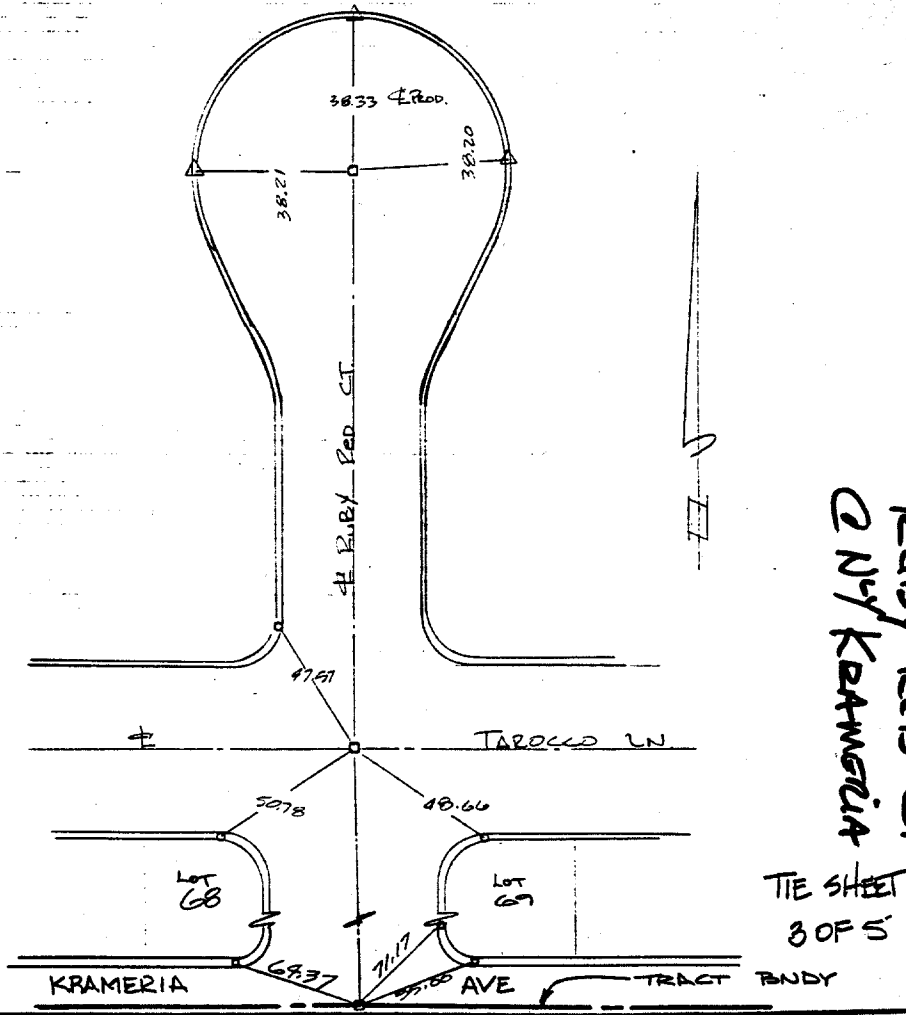
J. F. DAVIDSON ASSOCIATES
 CIVIL ENGINEERS • SURVEYORS • PLANNERS

F.B. 9/10/90

SURVEY OF 2 Ties
 FOR TR 19958-2 RICHMOND (MSZKLN) W.O. No. 994 DATE 2-12-83
 SURVEY PARTY J. BARZA, B.S. 57 REF. _____ A.M. _____

- INDICATES SET RAMSET NAIL IN T/C
- △ INDICATES SET NAIL #TAG LS. 3018 IN T/C
- INDICATES SET 1" IP LS 3018

SURVEY NOTES



RUBY RED CT
 CNY KRAMERIA

TIE SHEET
 3 OF 5

- × FD. Ramset Nail on T/C
- FD. LD. & TK. on T/C
- FD. "C" Nail on T/C
- Set LD. & TK. on T/C

Street: Ruby Red Ct.
7001 TIE
 OFFICIAL USE ONLY
 X-Street: Niyof Krameria To
Cul de Sac

Scale: _____
 Date: _____
 Drawn by: _____
 W.O.: _____
 F.B.: _____

OFFICIAL TIE PLAT CITY OF RIVERSIDE

These ties are for the purpose of perpetuating the found monumentation. No claim is made as to the relationship of the points or lines shown hereon to true boundary locations.

Sheet 1 of 1
 File No.: _____