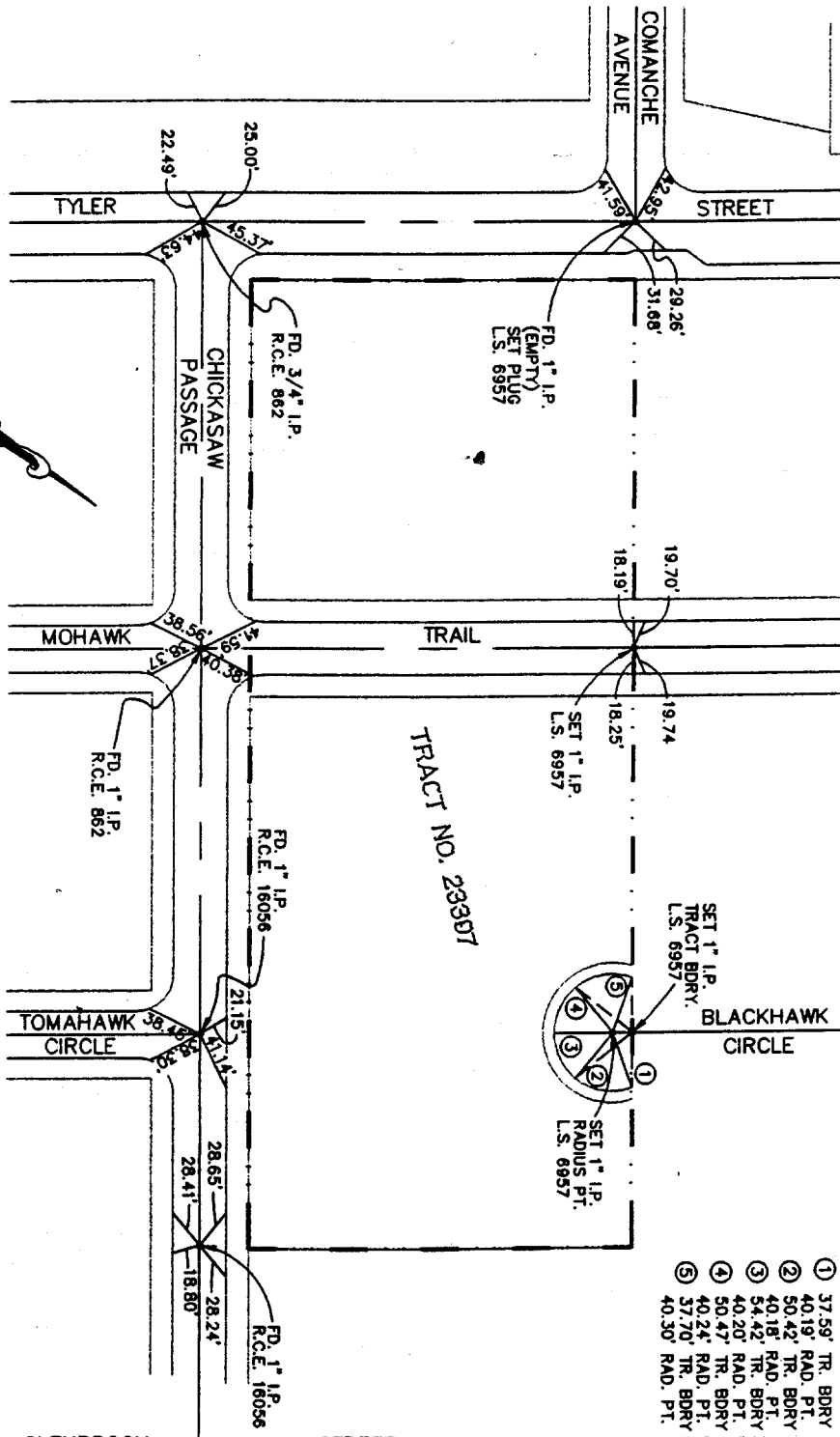
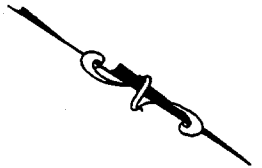


Street: **BLACKHAWK CIRCLE** X-Street: **703.T1F**
 OFFICIAL USE ONLY



NOTE:
 ALL THE POINTS ARE RAMSET NAILS IN T.C.

SCALE: 1" = 100'



CROUSE/BEERS & ASSOCIATES, INC.
 Civil Engineering x Surveying x Planning
 1700 HAMMER AVENUE, SUITE 104
 NORCO, CA 91760 (909) 736-2040 FAX (909) 736-6292
 TRACT NO. 23397 - C.L. TIES

- ✗ FD. Ramset Nail on T/C
- FD. LD. & TK. on T/C
- FD. "C" Nail on T/C
- Set LD. & TK. on T/C

- ① 37.59' TR. BDRY
- ② 40.19' RAD. PT.
- ③ 50.42' TR. BDRY
- ④ 40.18' RAD. PT.
- ⑤ 54.42' TR. BDRY
- ⑥ 40.20' RAD. PT.
- ⑦ 50.47' TR. BDRY
- ⑧ 40.24' RAD. PT.
- ⑨ 37.70' TR. BDRY
- ⑩ 40.30' RAD. PT.

BLACKHAWK CIRCLE

OFFICIAL TIE PLAT
CITY OF RIVERSIDE

These ties are for the purpose of perpetuating the found monumentation. No claim is made as to the relationship of the points or lines shown hereon to true boundary locations.

TRACT NO. 23397

Sheet 1 of 1
 File No.:

Scale:
 Date:
 Drawn by:
 W.O.:
 F.B.:

712.502