

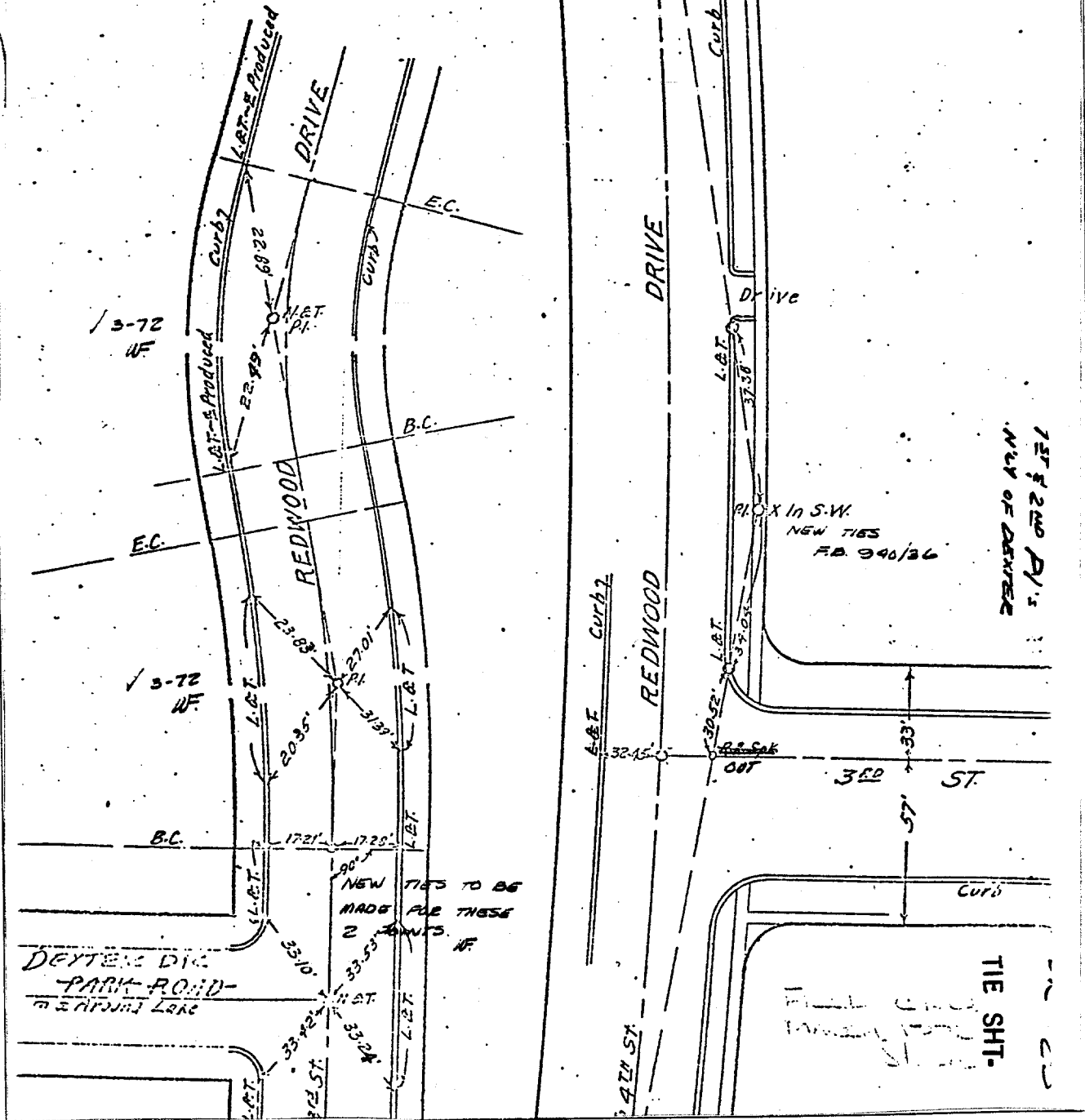
Street:

**REDWOOD DRIVE**

N'LY X-Street:  
OFFICIAL USE ONLY

**DEXTER DR.**

F.B. 246, Pg. 56-59



- × FD. Ramset Nail on T/C
- FD. "C" Nail on T/C

- FD. LD. & TK. on T/C
- Set LD. & TK. on T/C

Scale:

Date:

Drawn by:

W.O.:

F.B.: 246, Pg. 56-59

# OFFICIAL TIE PLAT

## CITY OF RIVERSIDE

*These ties are for the purpose of perpetuating the found monumentation. No claim is made as to the relationship of the points or lines shown hereon to true boundary locations.*

Sheet 1 of 1

File No.: