

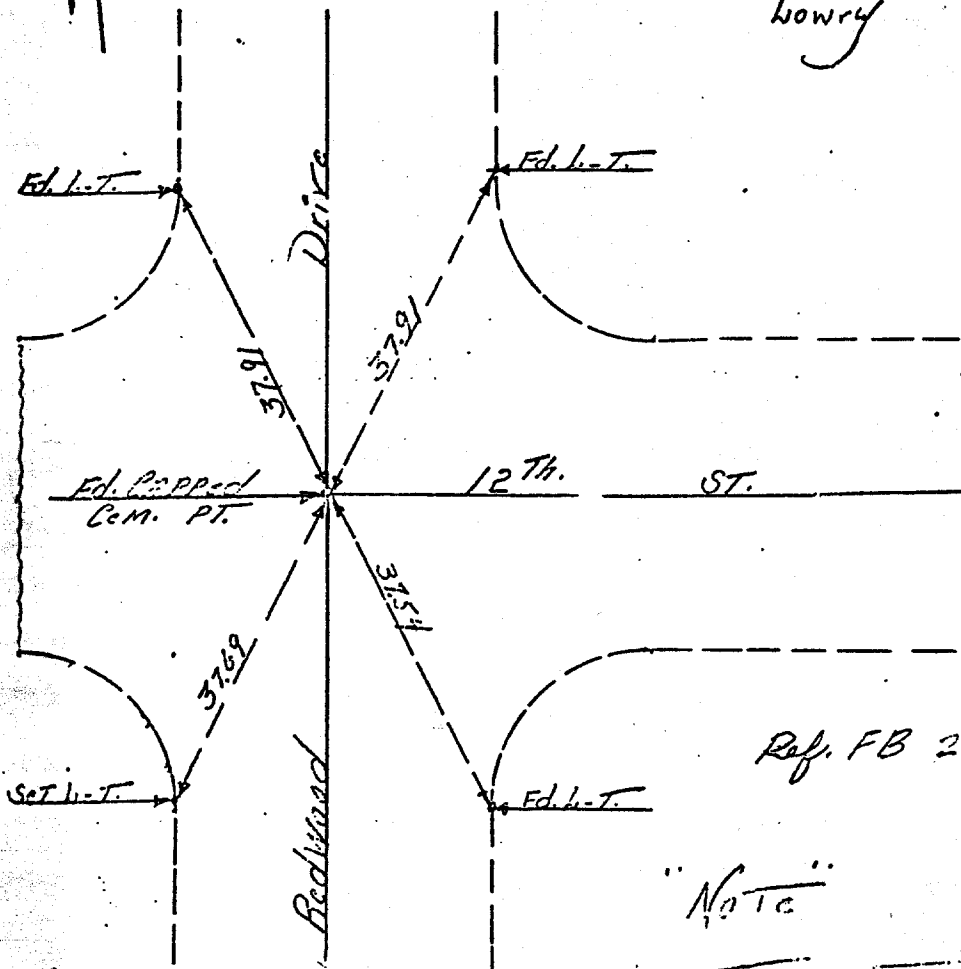
Street: REDWOOD DRIVE
7066, TIF
 X-Street: 12 TH STREET
 OFFICIAL USE ONLY

Red Wood Drive

@ 12th P

9-17-63
 F.B. 686/63

lowry



Ref. FB 224/71-76

"Note"

Transit Ties

TIE SHT.

FIELD CK'D
 9-68 G.P.H

- × FD. Ramset Nail on T/C
- FD. LD. & TK. on T/C
- FD. "C" Nail on T/C
- Set LD. & TK. on T/C

Scale:
 Date:
 Drawn by:
 W.O.:
 F.B.:

OFFICIAL TIE PLAT
CITY OF RIVERSIDE

These ties are for the purpose of perpetuating the found monumentation. No claim is made as to the relationship of the points or lines shown hereon to true boundary locations.

Sheet 1 of 1
 File No.: