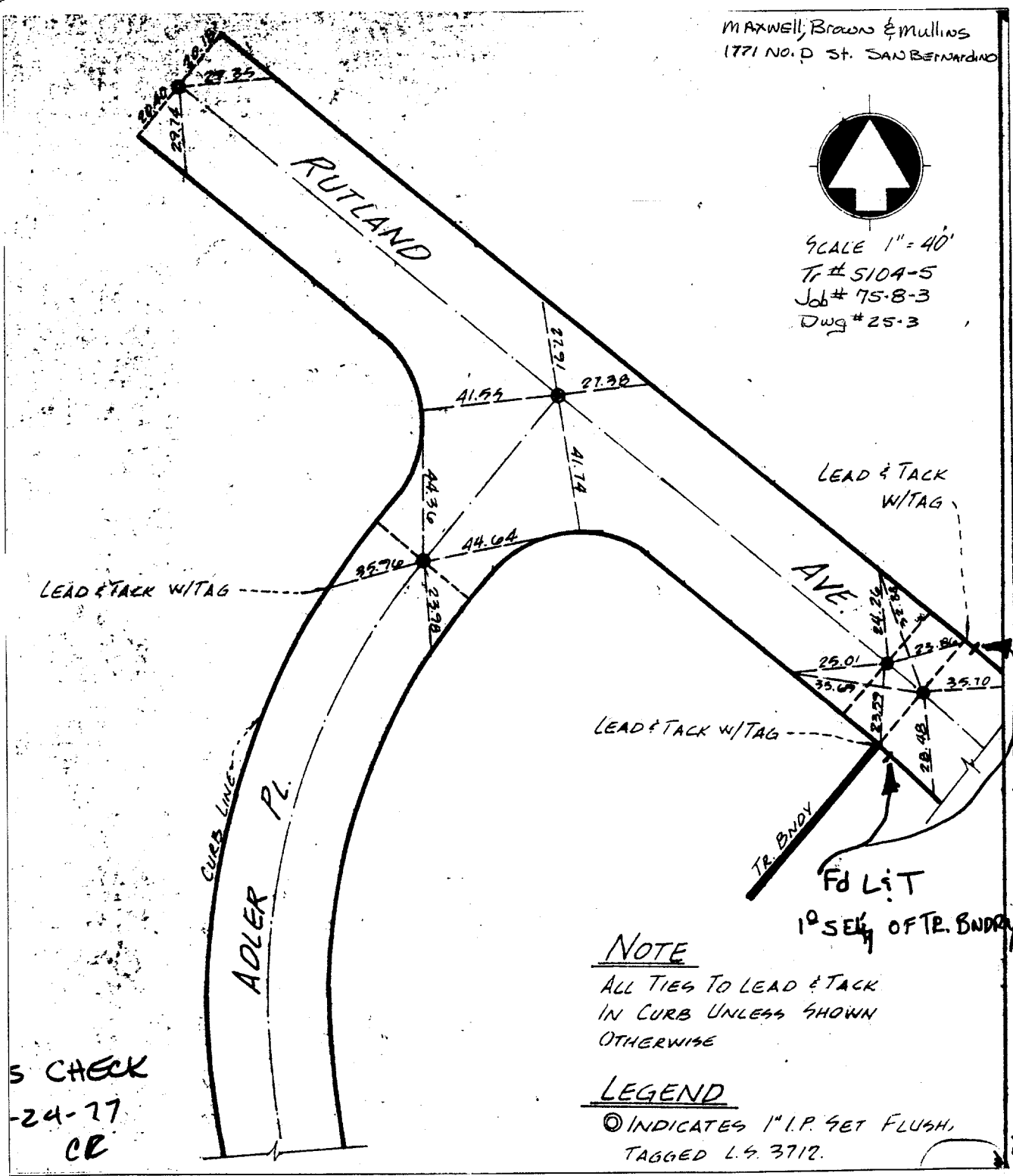


MAXWELL, BROWN & MULLINS  
1771 NO. D ST. SAN BERNARDINO



SCALE 1" = 40'  
Tr # 5104-5  
Job # 75-8-3  
Dwg # 25-3



Street: Rutland Ave  
7069. TIF  
OFFICIAL USE ONLY  
X-Street: Adler Pl.

NOTE

ALL TIES TO LEAD & TACK  
IN CURB UNLESS SHOWN  
OTHERWISE

LEGEND

○ INDICATES 1" I.P. SET FLUSH,  
TAGGED L.S. 3712.

- ✕ FD. Ramset Nail on T/C
- FD. "C" Nail on T/C

- FD. LD. & TK. on T/C
- Set LD. & TK. on T/C

S CHECK  
-24-77  
CR

Scale: 1" = 40'
Date: 2-23-77
Drawn by:
W.O.:
F.B.:

**OFFICIAL TIE PLAT**  
**CITY OF RIVERSIDE**

These ties are for the purpose of perpetuating the found  
monumentation. No claim is made as to the relationship of  
the points or lines shown hereon to true boundary locations.

Sheet 1 of 1
File No.: