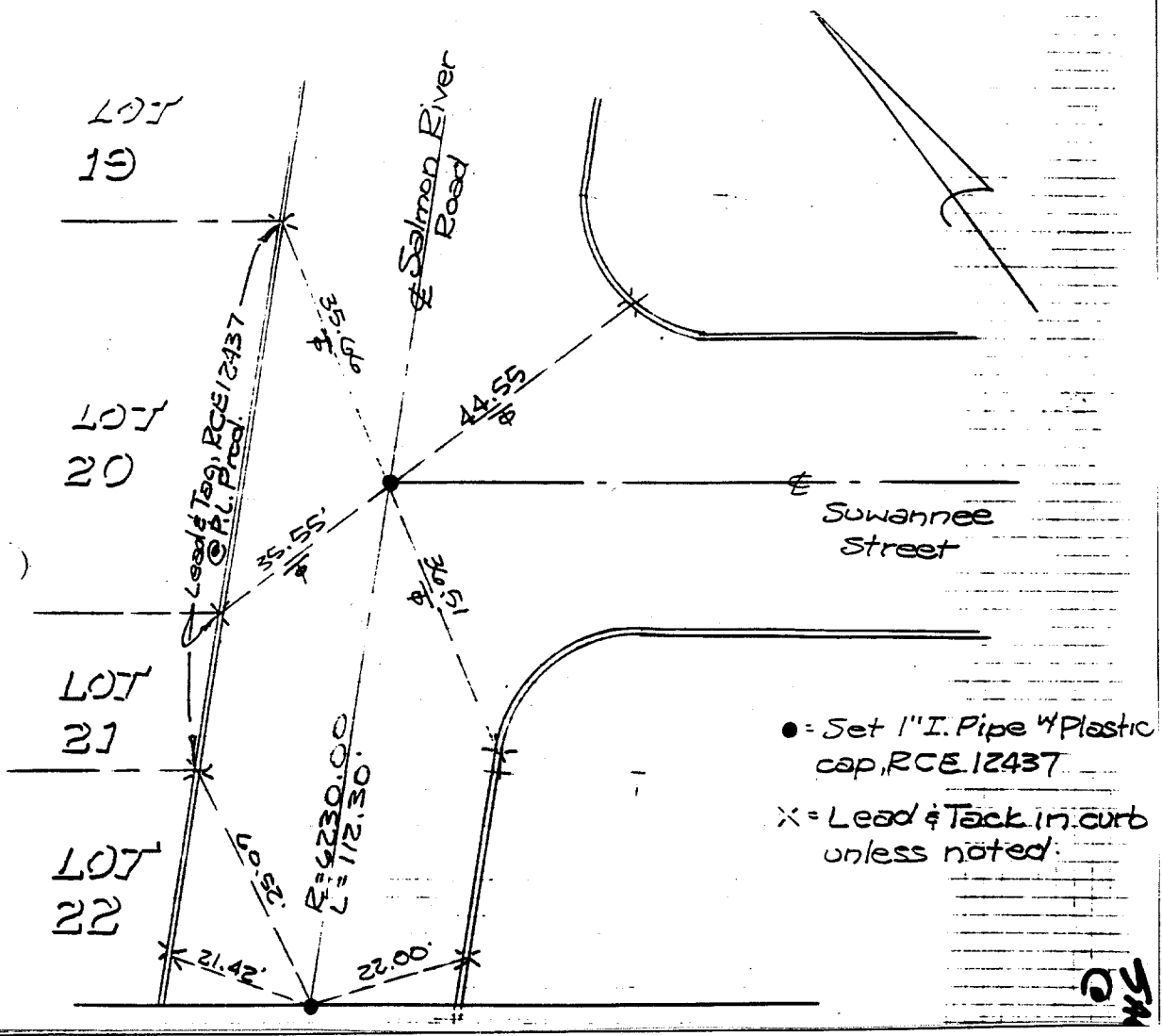


Street: SALMON RIVER ROAD 7110 TIE X-Street: SUWANNEE STREET

OFFICIAL USE ONLY

NO. OF CENTERLINE TIES INDEX CN. 2655 PAGE 3 OF 3
 SURVEYED BY J. BOULAN, S. ADKINS DATE JUNE 20, 1990 ORANGE COUNTY SURVEYOR



- ✕ FD. Ramset Nail on T/C
- FD. LD. & TK. on T/C
- FD. "C" Nail on T/C
- Set LD. & TK. on T/C

Scale:	<h2>OFFICIAL TIE PLAT</h2> <h3>CITY OF RIVERSIDE</h3> <p><i>These ties are for the purpose of perpetuating the found monumentation. No claim is made as to the relationship of the points or lines shown hereon to true boundary locations.</i></p>	
Date:		Sheet 3 of 3
Drawn by:		File No.:
W.O.:		
F.B.:		