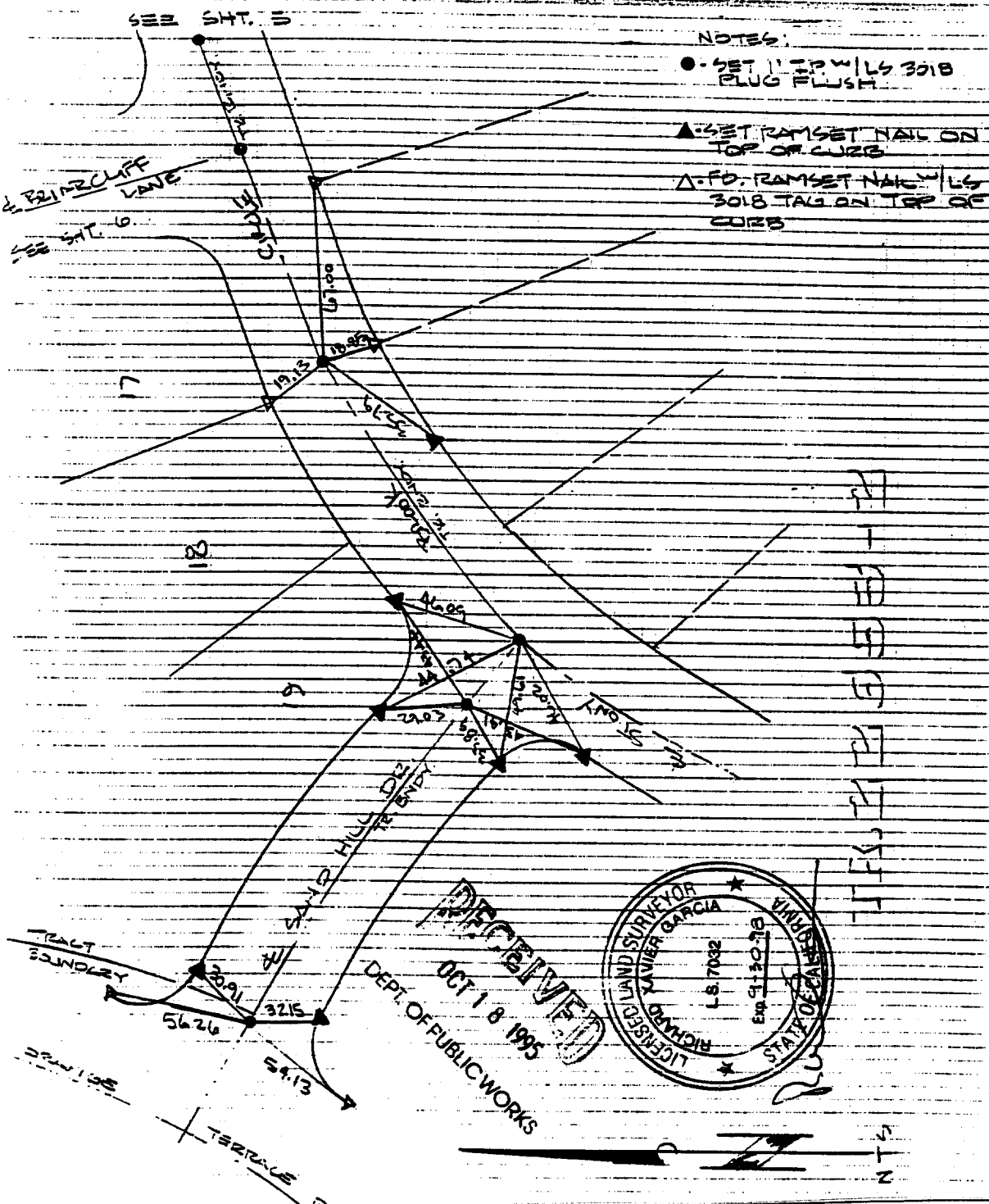


SURVEY NOTES SAND HILL DR & STONY BROOK C/ O ORANGE TERRACE TA

W.O. No. 13251 Date 10-2-95
 SURVEY PARTY RODOLFO VERA REF. _____ A.M. _____



NOTES:
 ● SET 1" TIP W/LG 3018 PLUG FLUSH
 ▲ SET RAMSET NAIL ON TOP OF CURB
 △ FD. RAMSET NAIL W/LG 3018 TAG ON TOP OF CURB

- ✕ FD. Ramset Nail on T/C
- FD. LD. & TK. on T/C
- FD. "C" Nail on T/C
- Set LD. & TK. on T/C

Scale:
 Date: 10-2-95
 Drawn by:
 W.O.: 13251
 F.B.: 13251/335

OFFICIAL TIE PLAT
 CITY OF RIVERSIDE

These ties are for the purpose of perpetuating the found monumentation. No claim is made as to the relationship of the points or lines shown hereon to true boundary locations.

TR 22653-4
 Sheet 1 of 1
 File No.:

Street: SANDHILL DRIVE 7126.71F
 X-Street: STONY BROOK CIRCLE
 OFFICIAL USE ONLY