

Street: SANDTRACK
 7130.77E
 X-Street: CUL-DE-SAC
 OFFICIAL USE ONLY

F.B.:
 W.O.:
 Drawn by: KGE
 Date: 10/21/98
 Scale: 1" = 20'

OFFICIAL THE PLAT

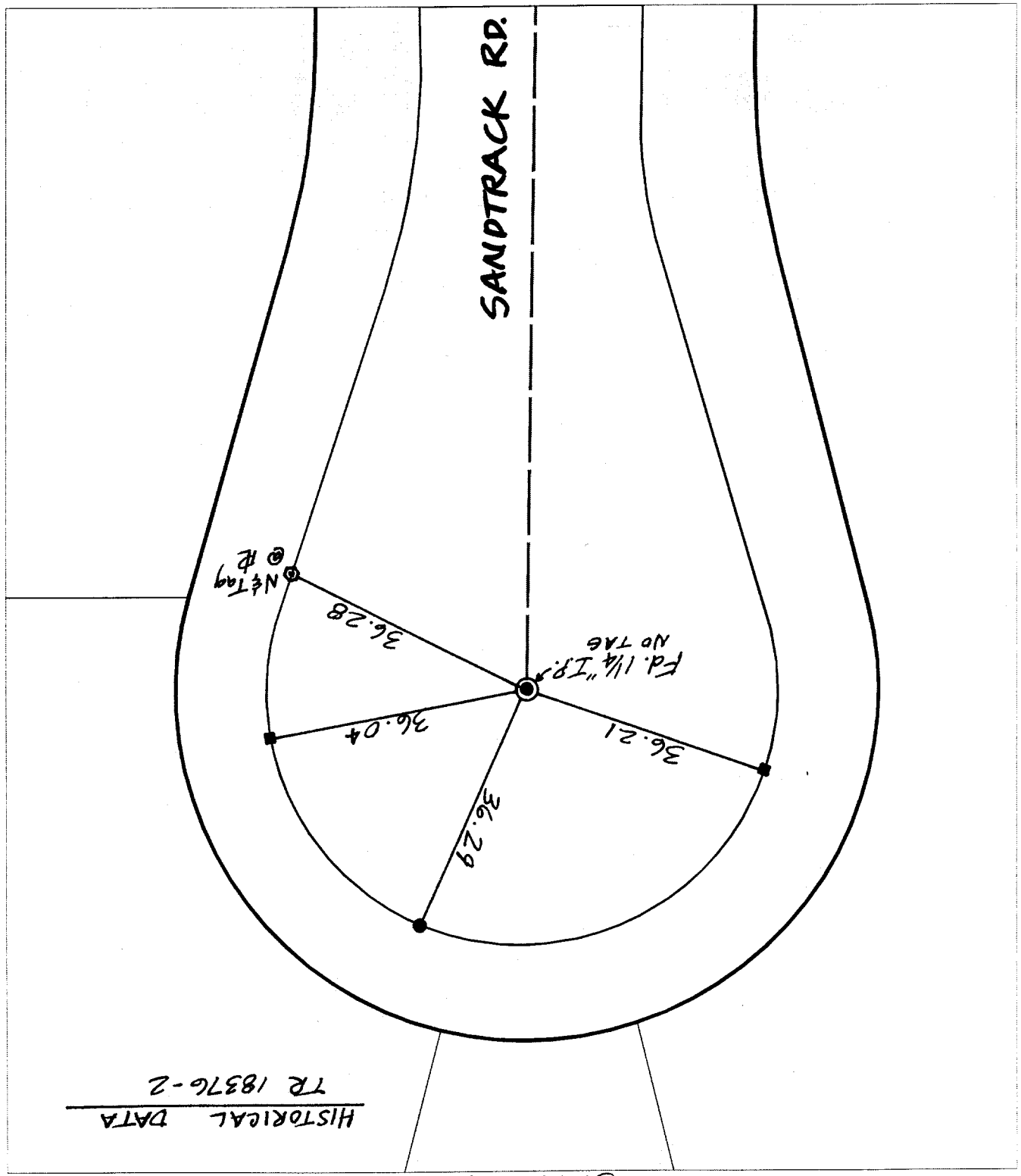
CITY OF RIVERSIDE

These ties are for the purpose of perpetuating the found
 monumentation. No claim is made as to the relationship of
 the points or lines shown hereon to true boundary locations.



File No.:
 Sheet 1 of 1

- × FD. Ramset Nail on T/C
- FD. LD. & TK. on T/C
- Set LD. & TK. on T/C



HISTORICAL DATA
 TR 18376-2

SWING TIES