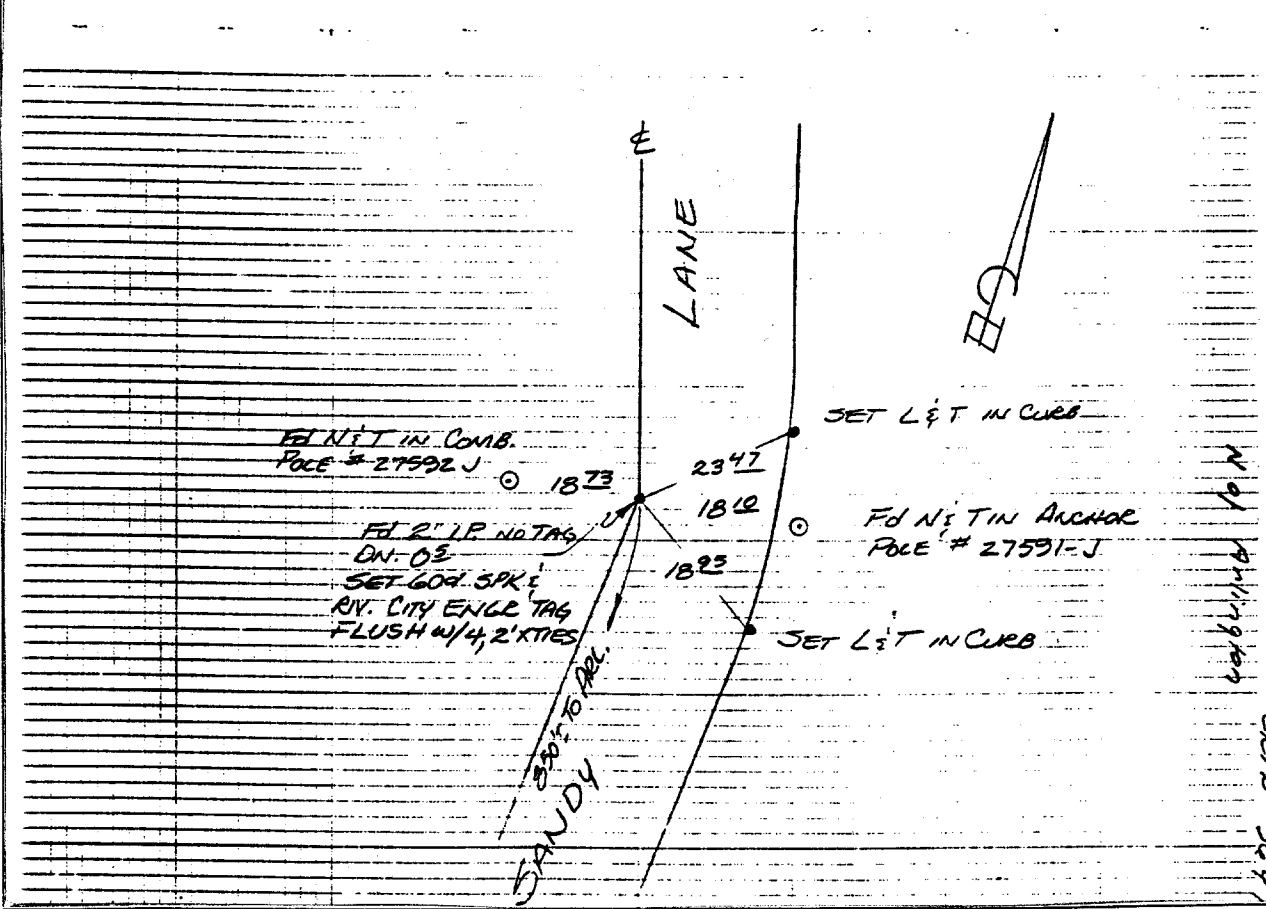
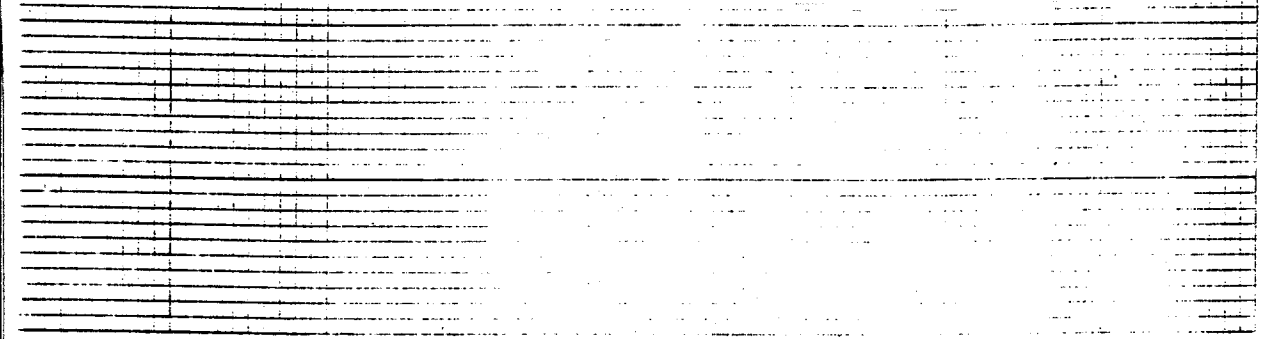


HISTORICAL DATA
 ALHAMBRA ADD.
 MB 11-79
 CREB 865-30
 CREB 930-68

SWING TIES

CREW
 RALSTON
 CONNER
 MAR 8, 1976

Street: SANDY LANE
7136.71E
 N/S X-Street
 OFFICIAL USE ONLY
ARLINGTON AVE



- ✕ FD. Ramset Nail on T/C
- FD. LD. & TK. on T/C
- FD. "C" Nail on T/C
- Set LD. & TK. on T/C

Scale:
 Date:
 Drawn by:
 W.O.:
 F.B.: 964/76

OFFICIAL TIE PLAT
CITY OF RIVERSIDE

These ties are for the purpose of perpetuating the found monumentation. No claim is made as to the relationship of the points or lines shown hereon to true boundary locations.

Sheet 1 of 1
 File No.: