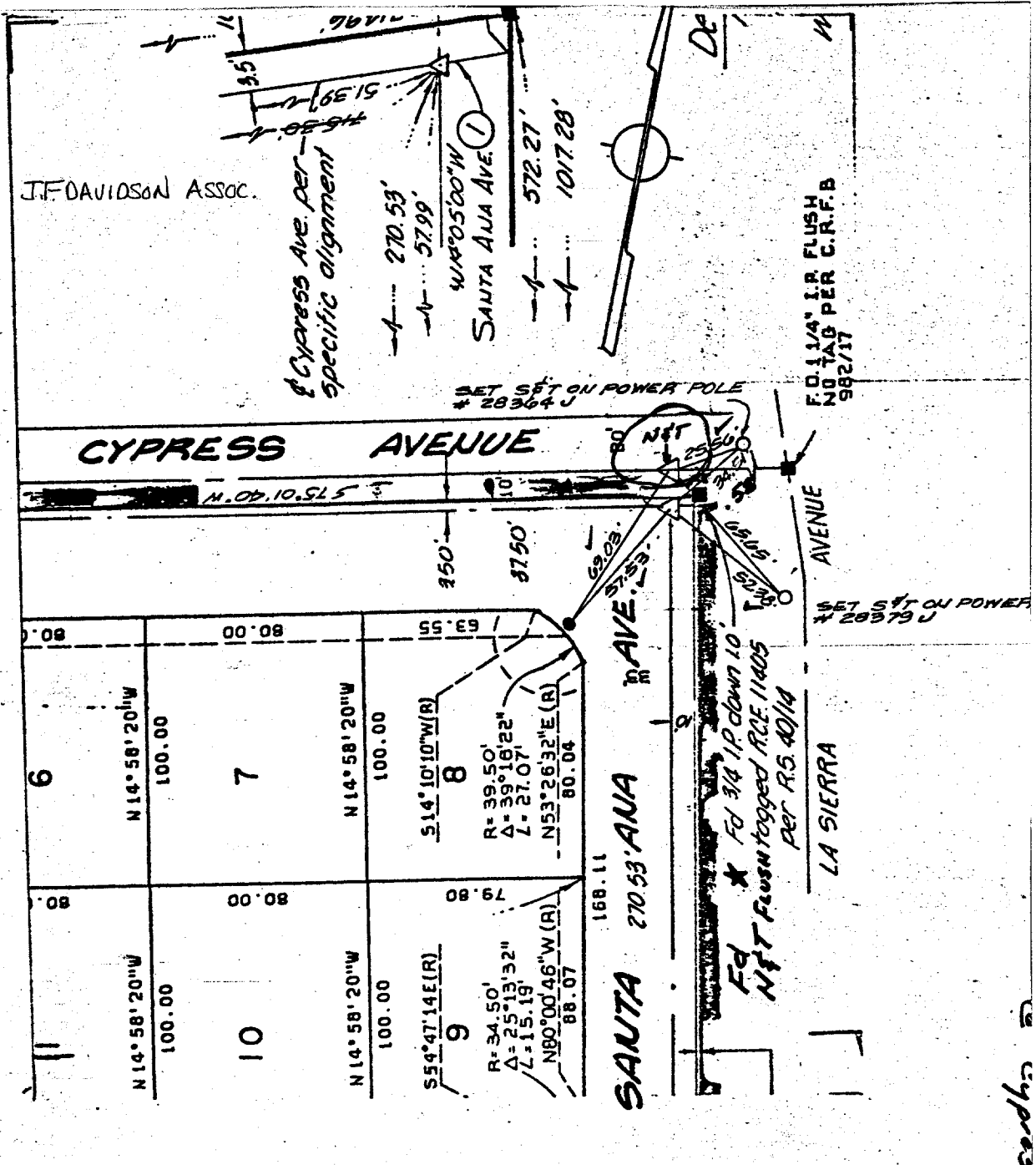


Street: **SANTA ANA AVE**
7153.71E

X-Street: **CYPRESS AVE**
 OFFICIAL USE ONLY

CYPRESS AVE



- △ Indicates (1/2" Brass Cap Stamped R.C.E 862).
- Indicates found Monument as noted
- ⊙ Indicates Set Nail & Tagged R.C.E. 862 In Curb.
- Indicates Set Nail In Curb.

E GARCIA
 FIELD CKD OCT 23, 1978

- × FD. Ramset Nail on T/C
- FD. LD. & TK. on T/C
- FD. "C" Nail on T/C
- Set LD. & TK. on T/C

Scale: 1" = 50'
 Date:
 Drawn by:
 W.O.:
 F.B.:

OFFICIAL TIE PLAT
CITY OF RIVERSIDE

These ties are for the purpose of perpetuating the found monumentation. No claim is made as to the relationship of the points or lines shown hereon to true boundary locations.

TRACT 8665
 Sheet 3 of 6
 File No.: