

Street:

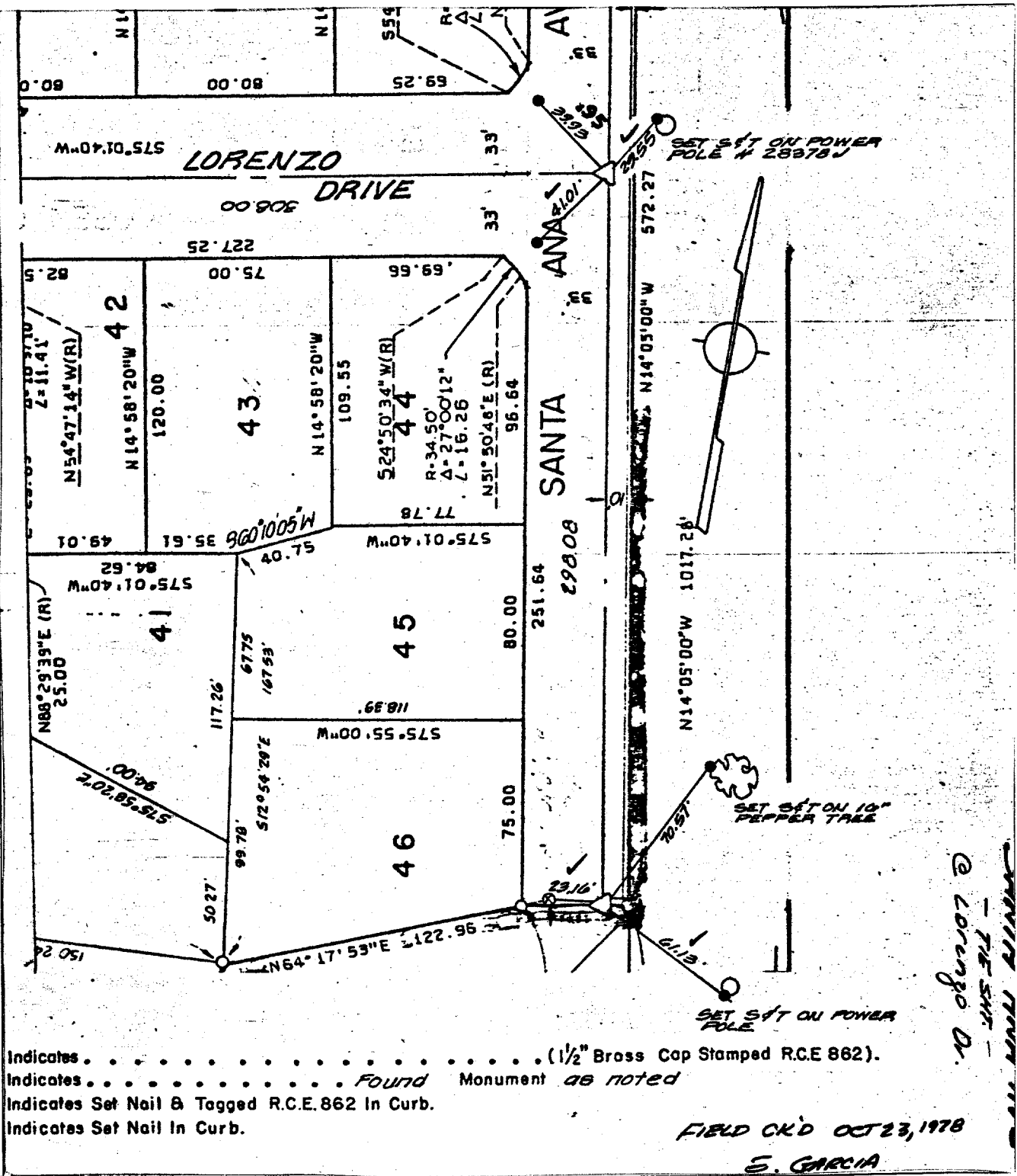
SANTA ANA AVE

7155.71E

OFFICIAL USE ONLY

X-Street:

LORENZO DR



Indicates . . . . . (1/2" Brass Cap Stamped R.C.E 862).  
 Indicates . . . . . Found Monument as noted  
 Indicates Set Nail & Tagged R.C.E.862 In Curb.  
 Indicates Set Nail In Curb.

FIELD CK'D OCT 23, 1978  
 E. GARCIA

✕ FD. Ramset Nail on T/C  
 ■ FD. "C" Nail on T/C

● FD. LD. & TK. on T/C  
 ○ Set LD. & TK. on T/C

Scale: 1" = 60'  
 Date:  
 Drawn by:  
 W.O.:  
 F.B.:

**OFFICIAL TIE PLAT**  
**CITY OF RIVERSIDE**

These ties are for the purpose of perpetuating the found monumentation. No claim is made as to the relationship of the points or lines shown hereon to true boundary locations.

TRACT 8665

Sheet 4 of 6

File No.: