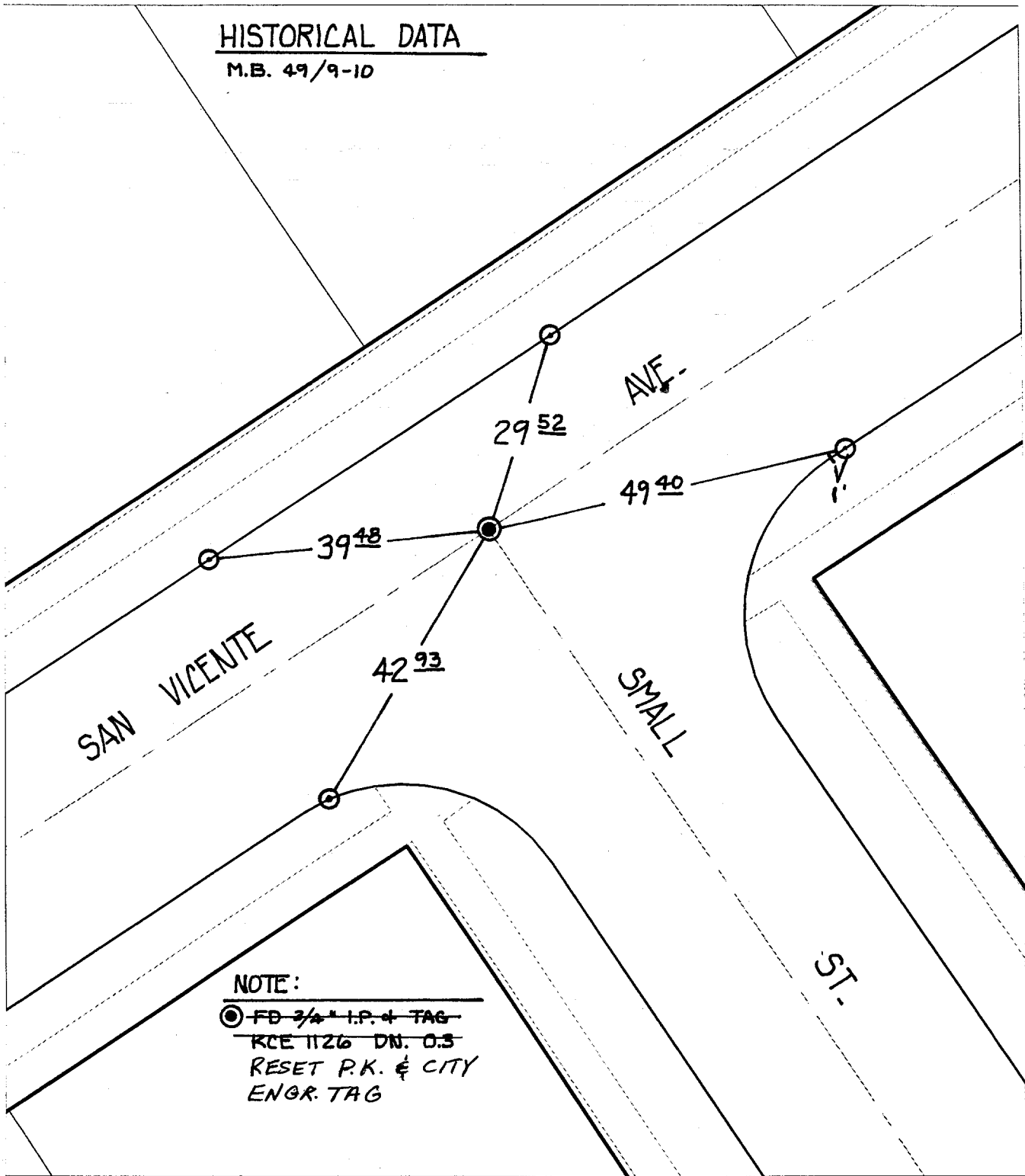


HISTORICAL DATA

M.B. 49/9-10



NOTE:

● FD ~~3/4"~~ I.P. & TAG  
 KCE 1126 DN. O.S.  
 RESET P.K. & CITY  
 ENGR. TAG

- ✕ FD. Ramset Nail on T/C
- FD. "C" Nail on T/C

- FD. LD. & TK. on T/C
- Set LD. & TK. on T/C

Street: ~~M.S. P.P.~~ SAN VICENTE AVE.

OFFICIAL USE ONLY X-Street:

SMALL ST.

Scale: 1" = 20'

Date: 08/23/99

Drawn by: L. Harris

W.O.:

F.B.:

**OFFICIAL TIE PLAT**  
**CITY OF RIVERSIDE**

*These ties are for the purpose of perpetuating the found monumentation. No claim is made as to the relationship of the points or lines shown hereon to true boundary locations.*



Sheet 2 of 2

File No.: