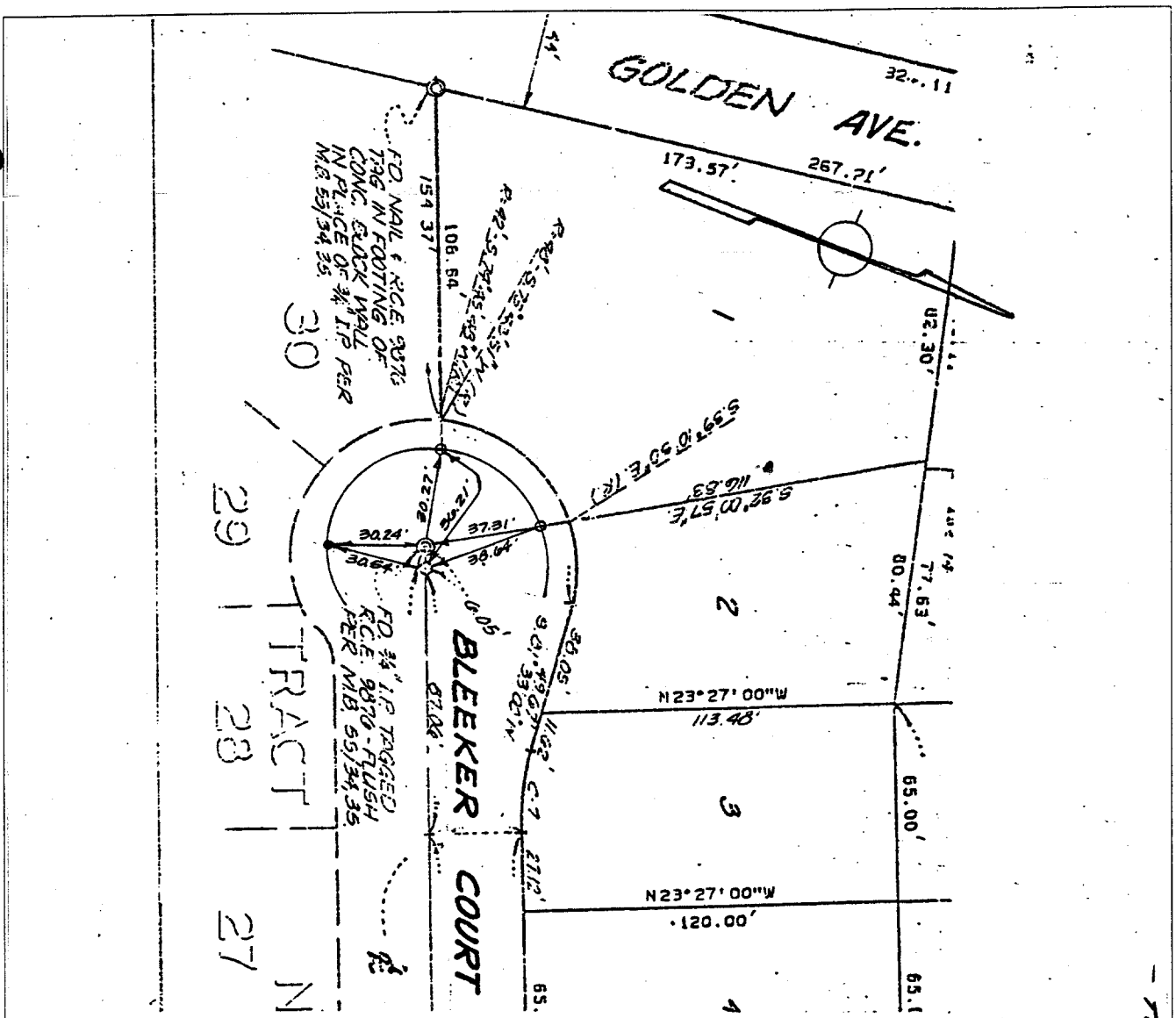


718.712

Street: BLEEKER CT 718.712
 X-Street: GOLDEN AVE
 OFFICIAL USE ONLY



- Indicates Set 1/2" Brass Cap Stamped R.C.E. 862
- Indicates Set 3/4" Iron Pipe Tagged R.C.E. 862
- ⊙ Indicates Set Nail & Tagged R.C.E. 862 in Curb.
- Indicates Set Nail in Curb.
- Indicates Found Monument as Noted.

WIDSON ASSOCIATES 6 TENTH STREET RIVERSIDE, CALIFORNIA	MONUMENT TIES FOR TRACT 8267	SHEET NO. <u>1</u> OF <u>4</u> DATE <u>FEB. 1978</u> SCALE 1" = 50'
--	---	---

- × FD. Ramset Nail on T/C
- FD. LD. & TK. on T/C
- FD. "C" Nail on T/C
- Set LD. & TK. on T/C

Scale:	<h2 style="margin: 0;">OFFICIAL TIE PLAT</h2> <h3 style="margin: 0;">CITY OF RIVERSIDE</h3> <p style="margin: 5px 0;">These ties are for the purpose of perpetuating the found monumentation. No claim is made as to the relationship of the points or lines shown hereon to true boundary locations.</p>		
Date:		Sheet 1 of 4	
Drawn by:		File No.:	
W.O.:			
F.B.:			