

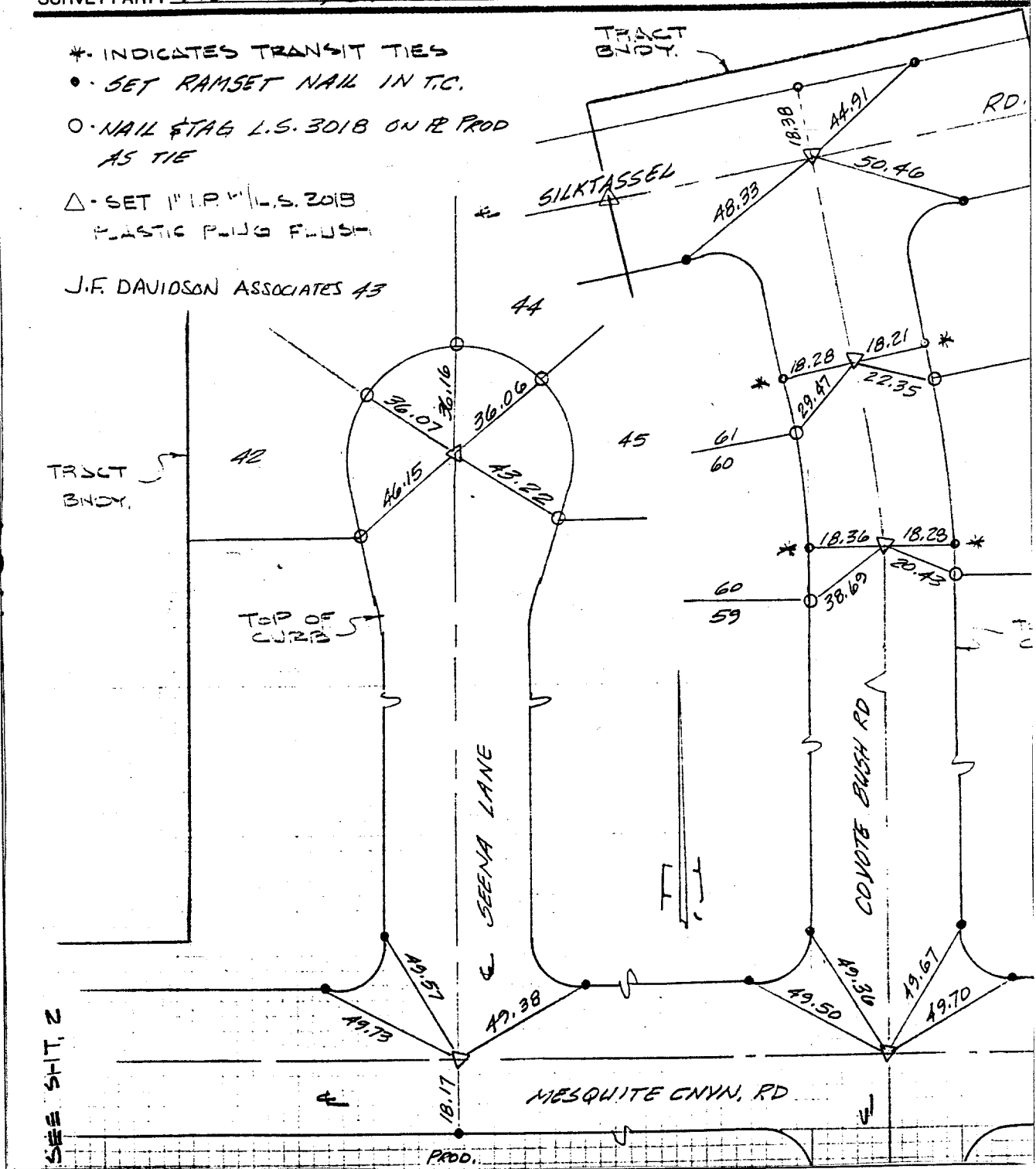
SURVEY PARTY HOPKINS, CHAGON

REF.

SEENA

- * INDICATES TRANSIT TIES
- SET RAMSET NAIL IN T.C.
- NAIL & TAG L.S. 3018 ON RE PROD AS TIE
- △ SET 1" I.P. L.S. 2018 PLASTIC PLUG FLUSH

J.F. DAVIDSON ASSOCIATES 43



Street: SEENA LANE
7201 TIF
 X-Street: MESQUITE CANYON RD
 OFFICIAL USE ONLY

- × FD. Ramset Nail on T/C
- FD. LD. & TK. on T/C
- FD. "C" Nail on T/C
- Set LD. & TK. on T/C

Scale:
 Date: JULY 27, 89
 Drawn by:
 W.O.:
 F.B.: 11009/60

OFFICIAL TIE PLAT
CITY OF RIVERSIDE

These ties are for the purpose of perpetuating the found monumentation. No claim is made as to the relationship of the points or lines shown hereon to true boundary locations.

TRACT 21834-2
 Sheet 1 of 4
 File No.: