

Street: SENNA LN.
7210.TIF
 X-Street: MESQUITE CANYON RD.
 OFFICIAL USE ONLY

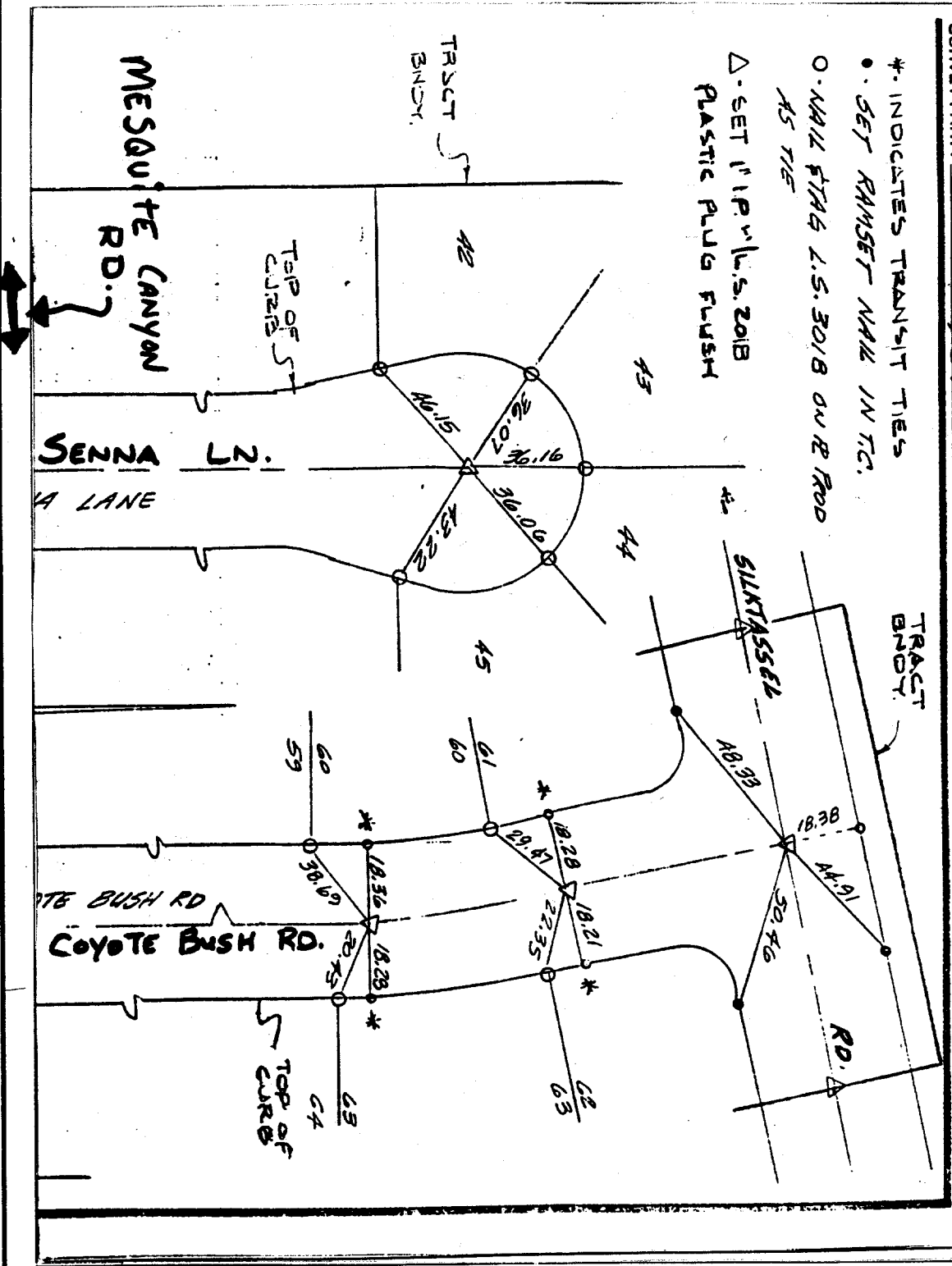


J.F. Davidson Associates, Inc.
 ENGINEERING PLANNING SURVEYING
 ARCHITECTURE LANDSCAPE ARCHITECTURE

FB. 11009/60

SURVEY OF 6 TIES TO 21834-2 SH. 3 OF 3
 FOR WILL DAVIDE Date 27 JULY 89
 SURVEY PARTY HARRISS, CHACON REF. WO. No. 11009
SENNA LANE

* INDICATES TRANSIT TIES
 • SET RAMSET NAIL IN T/C.
 O-NAIL TAG L.S. 3018 ON R. ROAD AS TIE
 Δ-SET 1" IP W/ L.S. 2018 PLASTIC PLUG FLUSH



- × FD. Ramset Nail on T/C
- FD. LD. & TK. on T/C
- FD. "C" Nail on T/C
- Set LD. & TK. on T/C

Scale:
 Date: July 27, 1989
 Drawn by:
 W.O.:
 F.B.: 11009/60

OFFICIAL TIE PLAT
CITY OF RIVERSIDE
These ties are for the purpose of perpetuating the found monumentation. No claim is made as to the relationship of the points or lines shown hereon to true boundary locations.

TR. 21834-2
 Sheet 1 of 1
 File No.: