

SCALE: N.T.S.  
 DATE: 3-25-97  
 DR. BY: FINLEY,  
 W.O.:  
 F.B.:

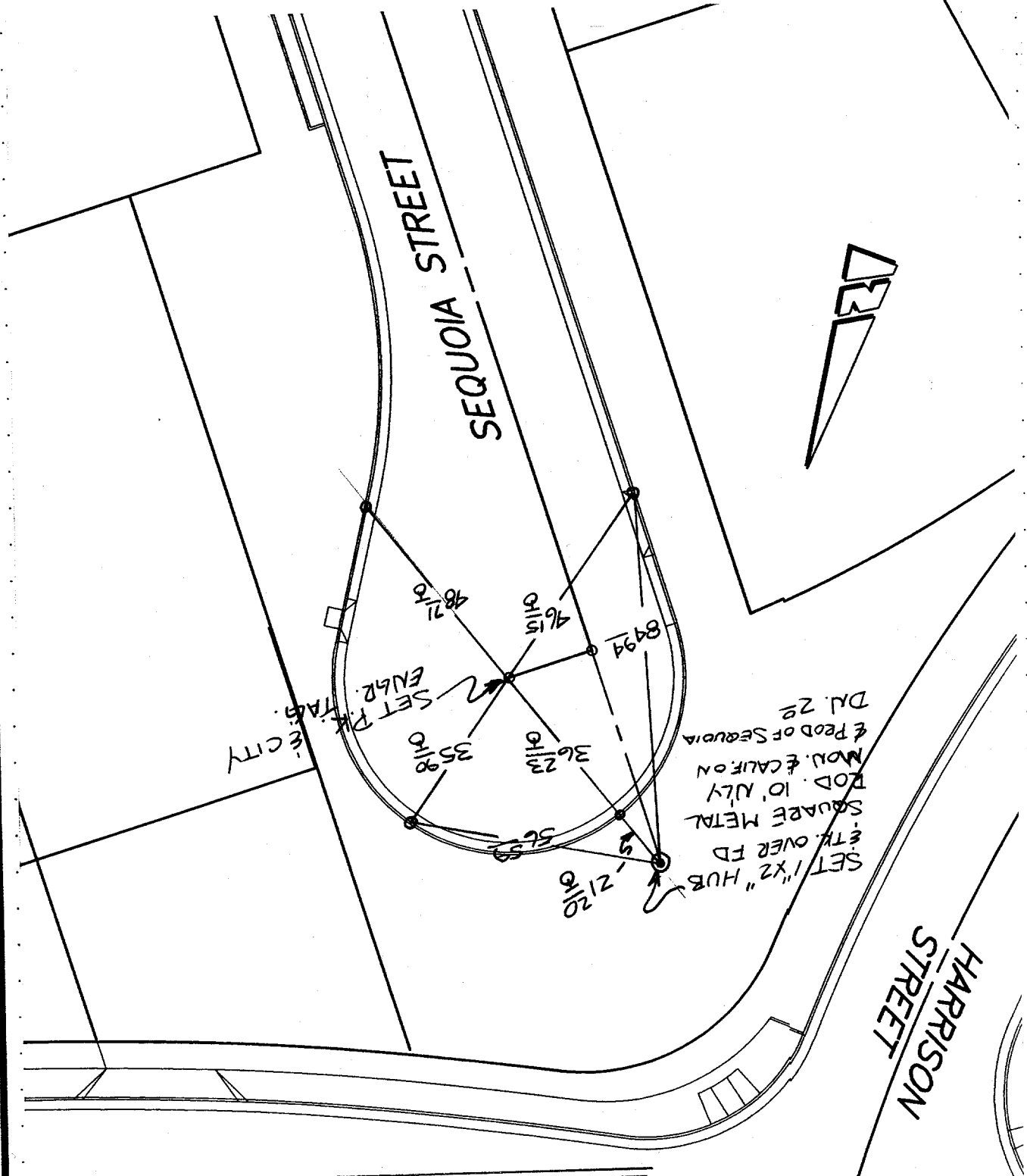
OFFICIAL TIE PLAT  
 CITY OF RIVERSIDE

FILE NO.:  
 OF 1 SHEETS  
 SHEET 1

These ties are for the purpose of perpetuating the found monumentation. No claim is made as to the relationship of the points or lines shown hereon to true boundary locations.

STREET Sequoia ST  
 2214, T1E  
 X-STREET  
 Cur-De-Sae  
 OFFICE USE ONLY

- FD. LD. & TK. on T/C
- SET LD. & TK. On T/C
- FD. Ramset Nail on T/C
- FD. "C" Nail on T/C



TRANSIT & SINK TIES