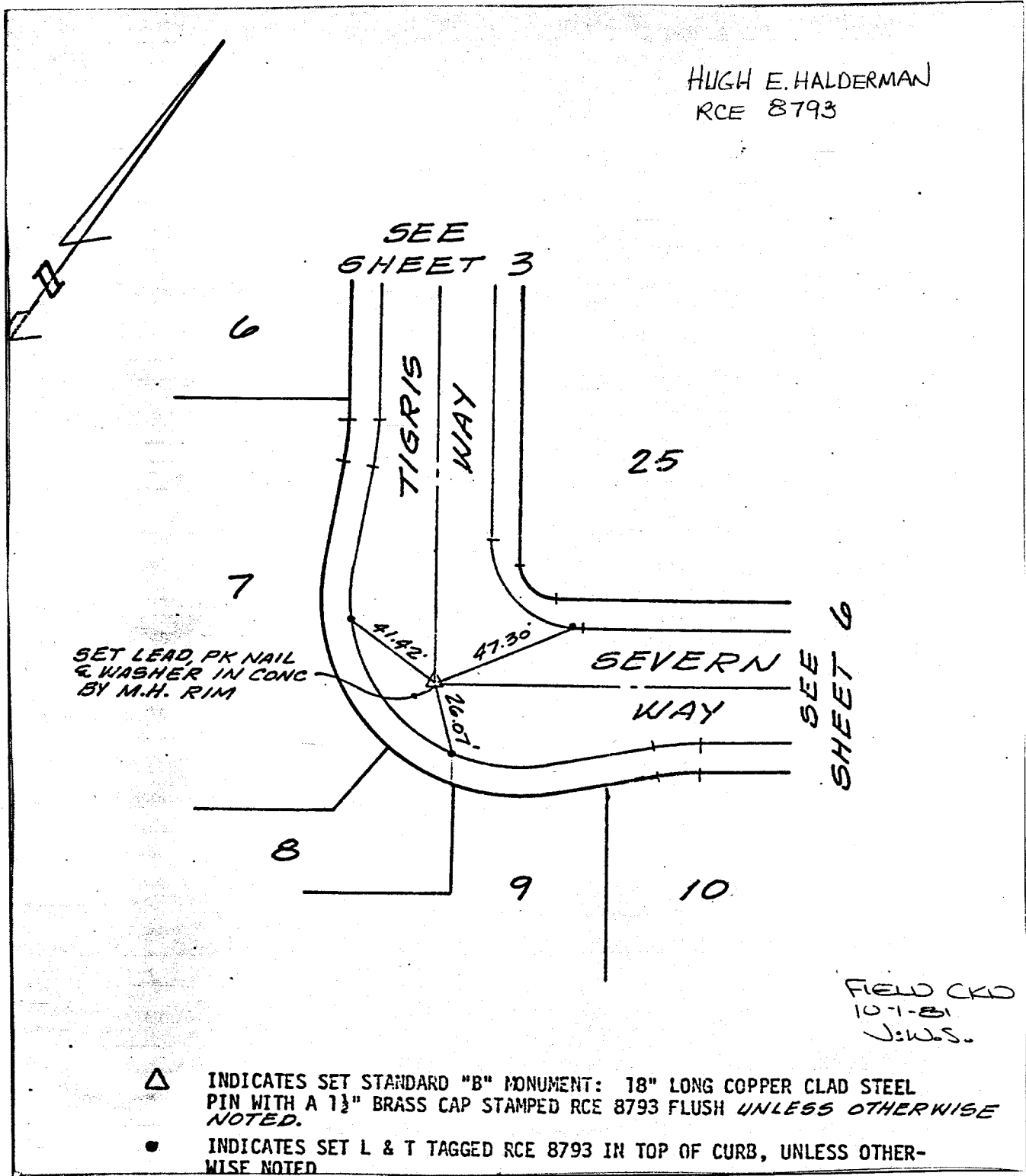


Street: SEVERN WAY
 7218.TIF
 X-Street: TIGRIS WAY

7218.TIF

OFFICIAL USE ONLY

HUGH E. HALDERMAN
 RCE 8793



OFFICIAL TIE PLAT
CITY OF RIVERSIDE

These ties are for the purpose of perpetuating the found monumentation. No claim is made as to the relationship of the points or lines shown hereon to true boundary locations.

Scale:
 Date: AUG 1981
 Drawn by:
 W.O.:
 F.B.:

Sheet 7 of 7
 File No.: