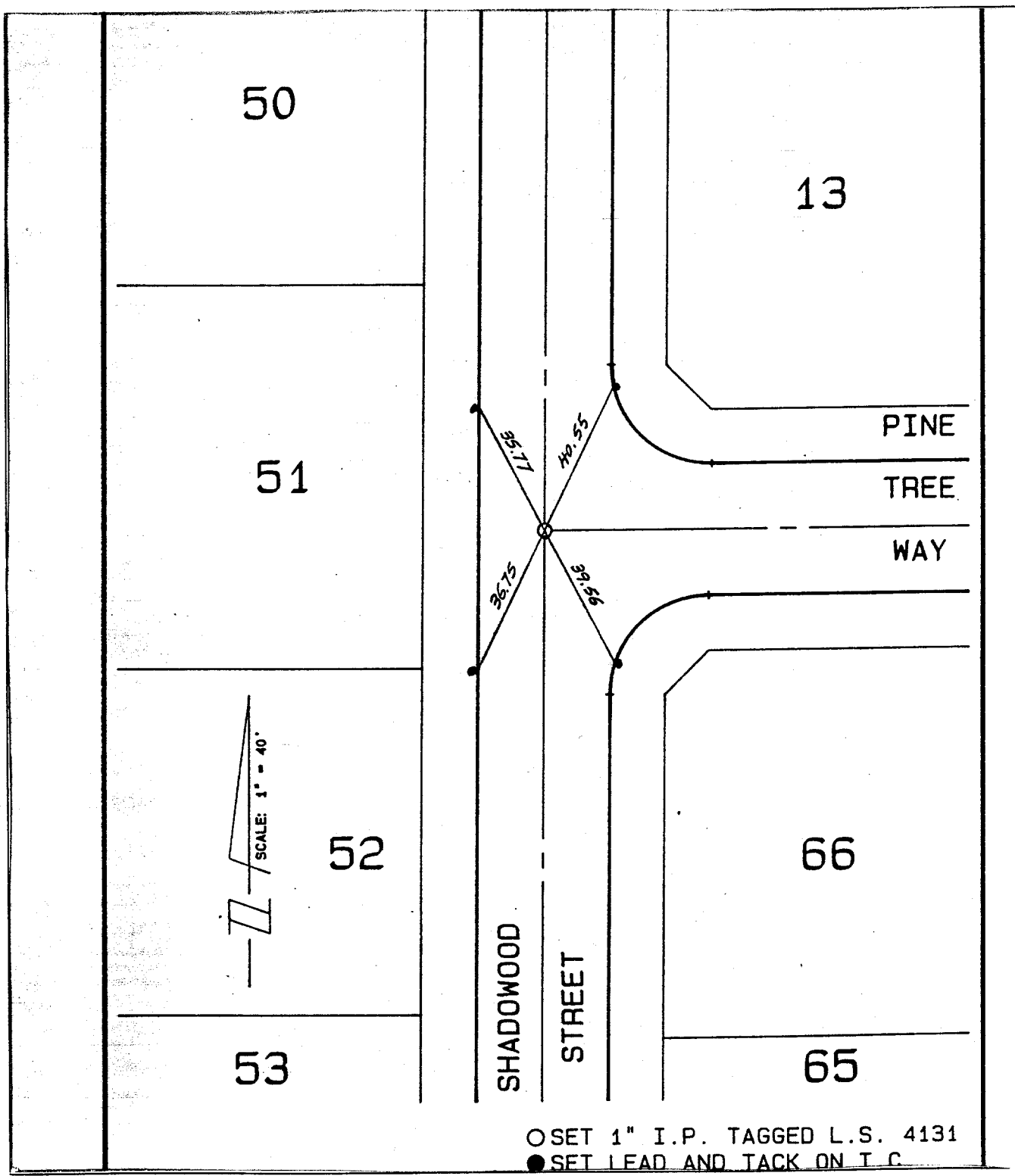


Street: SHADOWOOD ST. 7228.T/F X-Street: PINE TREE WAY
 OFFICIAL USE ONLY



○ SET 1" I.P. TAGGED L.S. 4131
 ● SET LEAD AND TACK ON T.C.

- ✕ FD. Ramset Nail on T/C
- FD. LD. & TK. on T/C
- FD. "C" Nail on T/C
- Set LD. & TK. on T/C

Scale:
 Date:
 Drawn by:
 W.O.:
 F.B.:

OFFICIAL TIE PLAT

CITY OF RIVERSIDE

These ties are for the purpose of perpetuating the found monumentation. No claim is made as to the relationship of the points or lines shown hereon to true boundary locations.

TRACT 21767

Sheet 1 of 1
 File No.: