

Street:

SHAKER DR  
724101F

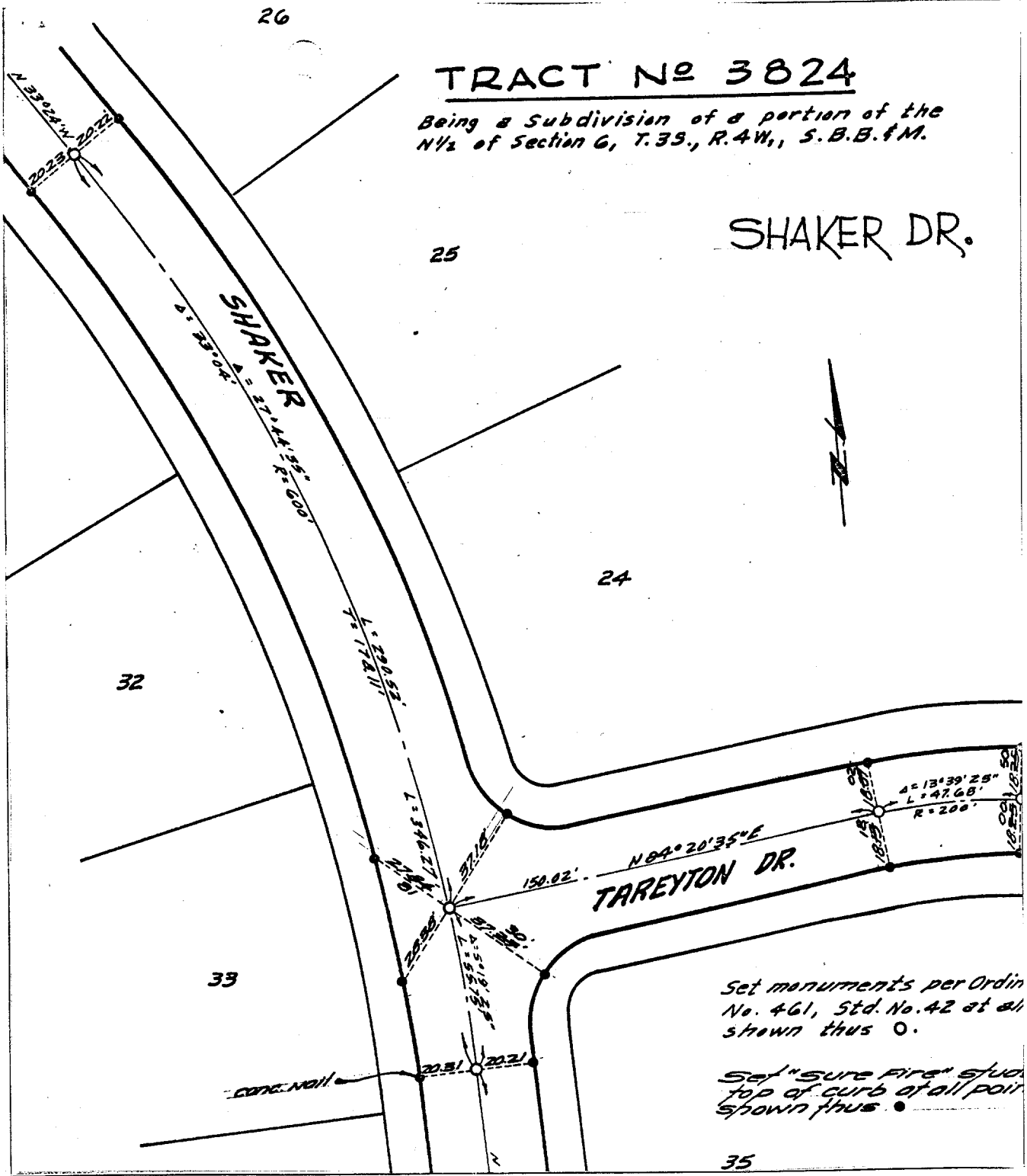
X-Street:  
OFFICIAL USE ONLY

TAREYTON DR.



# TRACT No 3824

Being a Subdivision of a portion of the  
N 1/2 of Section 6, T.35, R.4W., S.B.B.&M.



Set monuments per Ordin  
No. 461, Std. No. 42 at all  
shown thus ○.

Set "SURE FIRE" studs  
top of curb at all point  
shown thus ●.

- × FD. Ramset Nail on T/C
- FD. LD. & TK. on T/C
- FD. "C" Nail on T/C
- Set LD. & TK. on T/C

Scale: \_\_\_\_\_  
 Date: \_\_\_\_\_  
 Drawn by: \_\_\_\_\_  
 W.O.: 64-270  
 F.B.: 675/11

**OFFICIAL TIE PLAT**  
**CITY OF RIVERSIDE**

*These ties are for the purpose of perpetuating the found  
 monumentation. No claim is made as to the relationship of  
 the points or lines shown hereon to true boundary locations.*

TRACT 3824

Sheet 1 of 4  
 File No.: